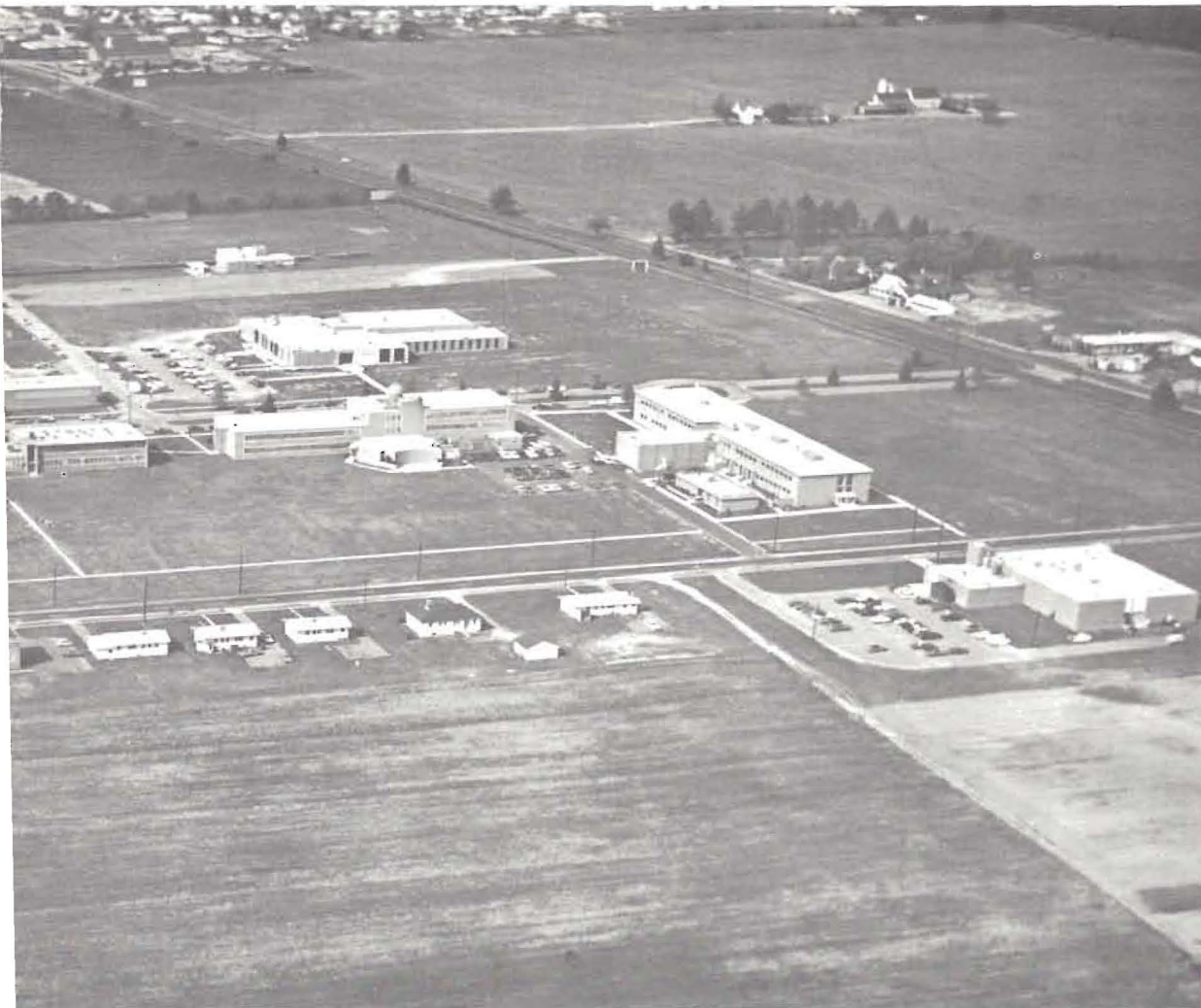


DELAWARE STATE COLLEGE

File

PRESIDENT'S REPORT

1967-1968



FOR CLOSED RESERVE
DO NOT TAKE FROM THE LIBRARY



Delaware State College today faces many of the greatest challenges of its entire history.

We are challenged to provide, unequivocally, the highest quality of education consistent with our mission as a four-year degree granting institution of Higher Learning.

We are challenged to provide fully for both the classroom and non-classroom needs of our students.

We are challenged to re-evaluate our total student-life program, to expand the curriculum with special emphasis on black culture, literature, history, art, science, et. al.

We are challenged to provide, without compromise, the facilities, buildings, classroom, laboratories, instructional equipment needed to fully implement the academic and extra curricula activities.

We are challenged to provide competent faculty, adequate staff, and competitive salaries, proper working conditions and practices to accomplish the educational objectives of the *College*.

We are challenged

As we face these challenges, we continue to solicit the positive concern of all those responsible for and interested in the welfare of Delaware State College.

Luna I. Mishoe, *President*

TABLE OF CONTENTS

	Page
Board of Trustees	iii
Letter of Transmittal.	iv
Officers of Administration.	v
New Academic Dean.	1
The Academic Program	2
The Honors Program	3
Admissions.	3
Evaluations	3
Public Relations.	4
Alumni Affairs.	5
Students.	6
Policy Statement.	8
Finances.	10
Financial Aid.	10
Recommendations	11



Board of Trustees



John N. McDowell, President



William G. Dix, Vice-President



Harold H. Keller, Secretary



Edward W. Hagemeyer



Harold Schmittinger



James W. W. Baker



James C. Hardcastle



James H. Williams



Walton H. Simpson



William S. Young



Charles E. Grubb



*Charles L. Terry, Jr.
Governor of Delaware*



*Luna I. Mishoe, President
Delaware State College*

LETTER OF TRANSMITTAL

TO: The President and Members of the Board of Trustees
Delaware State College
Dover, Delaware 19901

Sirs:

I am pleased to submit herein the President's Report on Delaware State College covering the school term 1967-68.

Respectfully submitted,
LUNA I. MISHOE, *President*

BOARD OF TRUSTEES

John N. McDowell, *President* Newark
William G. Dix, *Vice President* Bridgeville
Harold H. Keller, *Secretary* Laurel
Edward W. Hagemeyer Wilmington
Harold Schmittinger Dover
James W. W. Baker Georgetown
James Hardcastle Dover
James H. Williams Dover
Walton H. Simpson Camden
William S. Young, Jr. Wilmington
Charles E. Grubb Newark

EX OFFICIO

The Governor of the State of Delaware, Charles L. Terry, Jr. Dover
The President of the College, Luna I. Mishoe Dover

OFFICERS OF ADMINISTRATION

Luna I. Mishoe, Ph. D., *President*

Nathaniel P. Tillman, Ph. D., *Academic Dean*

Edward T. Crawford, M.C.S.; C.P.A., *Business Manager*

William A. Daniel, Ph. D., *Registrar*

Dorothy Harris, M.A., *Dean of Students*

Elizabeth C. Dix, M.A., *Dir. of Public Relations and Alumni Affairs*

Norwood C. Davis, B.S., *Director of Admissions*



A New Academic Dean for Delaware State College



Upon the resignation of Dean R. C. Henderson, Dr. Nathaniel P. Tillman was appointed Acting Academic Dean of Delaware State College, August, 1967.

This was Dr. Tillman's first experience as an Academic Dean. Nevertheless, he brought to this office a solid background of scholarly achievement and teaching experience in several colleges, including Delaware State.

His first year in office brought him full baptism into the total administrative process of the college.

During the winter of 1968, he served a full month as Chief Administrative Officer of the college while the President participated in an international Seminar in Comparative Higher Education which took him to London, East Berlin, Prague, Czechoslovakia, Moscow, and Copenhagen, Denmark.

During his first year (1967-68), the new dean shared the full round of concerns, i.e., student unrest, curriculum revision, faculty recruitment and budgetary problems.

As a result of his first year in office, I was pleased to announce on Commencement Day the action of the Board of Trustees, promoting Acting Dean Tillman to the full rank of the Academic Dean of Delaware State College.



I. The Academic Program

a. Curricula

I share the concern expressed in the report of the academic Dean concerning the curricula and the general education program. He remarked that . . . "As Academic Dean and Chairman of the Curriculum Committee, I will attempt to have the several curricula and especially the general education program reorganized before the next examination by the Middle States Association. The objective will be to correct the proliferation trend and its effects. I estimate that it will require two years to accomplish this task. A feature of this organization will consist of changes in the content of the general education program to make it more systematic."

b. Faculty

Generally, we are pleased with the faculty of Delaware State College. The retention and recruitment of additional faculty is getting more and more difficult. The basic problem is competitive salaries and other fringe benefits.

We believe now that our faculty should be moved to the "B" level on the national scale of the American Association of University Professors.

c. The Library

The College has outgrown its library facilities in every respect.

We do not have the quantity of books, periodicals, and other materials we need relative to the current enrollment. Our holdings of 60,000 volumes should now be at 100,000. However, if we had 100,000 volumes today, there would be no space in the current library to shelve them.

The professional staff of three librarians should be brought immediately to five.

In summary, we need . . .

1. A new library building
2. To increase the holdings to at least 100,000 volumes within the next two years. Additional periodicals, records and other equipment are also needed.
3. The staff should be doubled beginning September, 1969.

I realize that the library has number one priority for fiscal 1971. If, however, funds can be found to relieve the library situation before that time -- this should certainly be done.





The Honors Program

The Honors Program has been reorganized and is functioning according to expectations. The Director, Dr. del Tufo, had evidenced a predictable capability for promoting and executing the program. He and the Honors Council are to be commended for their efforts.

The Academic Dean believes the College must intensify and extend our planning for the Program so as to obviate the necessity of having to face unexpected circumstances as regards to course offerings, credit, staffing, and financial support. The Dean, also, endeavors to get credits for honors work recognized and counted as an integral part of degree requirements rather than as an addition as is now the case.

Admissions

Admissions constitute an activity which requires some additional attention and support. The ordinary procedures of admission have been well-administered by Mr. Davis, and the office works very effectively under existing conditions.

The academic Dean recommends that the College place more emphasis on recruiting and involve more of our funds, students, and faculty in the effort. This request is now being met.

Evaluations

The Academy for Educational Development has been commissioned by the Higher Educational Aid Advisory Commission of Delaware to make a comprehensive study of higher education in Delaware of which Delaware State College will be included.

This study is scheduled for completion early during the 1968-69 school term.

The entire teacher education program is due for an evaluation by the Department of Public Instruction of Delaware during the 1968-69 school term.

The Middle States Evaluation is expected during the winter of the 1971-72 term.

II. Public Relations

Delaware State College has served the state of Delaware for seventy-seven years. Because of its unique position, one of the several undergraduate institutions of higher learning, Delaware State College accepts its expanded responsibilities in a world beset by tension and unrest.

The Public Relations Office has increasing responsibility to the public, the community, the state, and nation to keep them aware of the potential and actual impact of Delaware State College in shaping the educational, cultural, intellectual, and economic heritage of this state.

Its commitment is to tell the facts of the college to the public and assist in reflecting the proper image of the college to the community and interpreting the community to the college.

As higher education continues through this period of stress and strain, Public Relations functions through the press, publications, radio, television and other media to inform the people of the expanding needs as well as the College's functions, goals, and aspirations.

We are attuned to the public expectancy -- a quality college serving a fully integrated student body and offering the best in a liberal education consistent with our means and objectives. Perhaps, because we are small, Delaware State College is responding to the mandate to serve and be concerned with the individual needs of our students. Only through concern for the individual can the college sustain the vital spirit necessary to create a great college of higher learning. Our story is to project the objectives of Delaware State College in terms of what it does for people.

The message of the Office of Public Relations is that Delaware State College's desire is to serve effectively in the world and community.

The communication media has been very receptive and cooperative in telling our "story" to the community and state. The cooperation of the communication media and community has been superb. Publicly the College wishes to thank them and to solicit their continued support.



Alumni Affairs

The Alumni Office has attempted to attract, focus, generate, maintain, and increase the interest and goodwill of the public and fellow alumni for the college. Also, the office has implemented this by keeping the alumni informed of the long range plans of the institution, the academic standards, the calibre of faculty, and interesting accomplishments of fellow alumni.

The office has functioned as a clearing house or information depository of the activities for the alumni chapters and individual alumni. Also, the office correlates the alumni program with the college program.

The Office of Alumni Affairs has worked with the Alumni Executive Committees in the formation and for the participation, recognition and hospitality of the Alumni.

The Office entertained and had Alumni participation in the following programs:

1. Homecoming, Founder's Day, Parent's Day, and Dedication Programs.
2. This year, the Delaware State College Alumni was co-host with Dr. and Mrs. Mishoe for a Faculty-Alumni Soiree.
3. Although not able to visit all chapters, the Director of Alumni Affairs visited and spoke with Alumni Chapters and encouraged the faculty and staff to become associate members of the National Chapter.
4. Edited issues of the Echo and Newsletters.
5. Area chapters received copies of Faculty Newsletters once a month, the President's Report, and new brochures.
6. Processed the alumni directory for updating files.

Medgar Evers Hall





III. Students

Enrollment by semesters	-- 1952-53	to	1967-68
<i>Year</i>	<i>First Semester</i>		<i>Second Semester</i>
1952-53	121		115
1953-54	153		148
1954-55	180		173
1955-56	205		211
1956-57	249		241
1957-58	282		271
1958-59	294		289
1959-60	356		336
1960-61	345		357
1961-62	501		500
1962-63	574		572
1963-64	680		720
1964-65	776		769
1965-66	814		793
1966-67	898		803
1967-68	909		937

Two important student facilities were added during the 1967-68 school term. They were a new Student Center and a Residence Hall for men.

The Residence Hall for men will accomodate 228 at two per room. In addition, it contains three efficiency apartments for Residence Hall Directors, general study rooms, lounges, TV rooms, recreational areas, a barber shop and a laundry.

It is the first and only completely air conditioned building on the campus. It was ready for occupancy in the spring of 1968 and immediately relieved the over crowded condition in Conwell Residence Hall for men.

The new Martin Luther King, Jr., Student Center was opened September, 1967, and provided a much needed area for student activities for both

the campus and commuting students. It contains a 1,000 box post office, a college book store, a suite for the Student Government Association and the Pan Hellenic Council, a suite for the Student Newspaper and Yearbook, a recreational area, meeting rooms, The Career Planning and Placement Office, a large general lounge, a canteen, a TV listening room, a small private dining area, and a large multiple purpose air conditioned room which is used for student assemblies and dancing.

The student center was well used and appreciated by the students.

The year 1967-68 was an historic year for Delaware State College. The College was struck by the most serious wave of student unrest in its 77 years history.

On May 10, 1968, while attempting to dedicate the new student center, we had a confrontation with a relatively small group of students. The dedication was disrupted and had to be called off. The immediate cause of the disruption was the students' concern over having the new men's dormitory named "Medgar Evers Residence Hall".

Later in the afternoon of May 10, the faculty suspended the leader, i.e., the President of the Student Government Association. A week later, on May 17, 1968, the Administration Building was seized and occupied by students. It is believed that the seizure grew directly out of the suspension and failure to reinstate the President of the Student Government Association.

The National Guards and State Police were called to the campus, but the students gave up the building peacefully after some Trustees and the Administration agreed to meet with them immediately to hear their grievances.

A list of grievances were taken up at the meeting. A Trustee-Faculty-Student Committee consisting of four Trustees, four Faculty members, and six students was formed to consider these and future grievances which may arise. This Committee has been working steadily and effectively toward the solution of many student related problems.

Since the student unrest of the spring of 1968, the Trustees have assumed a more active role in student-life affairs of the college. Accordingly, they have developed and published a fundamental policy document which is herein reproduced as a part of this Annual Report.



DELAWARE STATE COLLEGE POLICY STATEMENT

By
The Board of Trustees

The Board of Trustees of Delaware State College, realizing that colleges today, more than ever before, face a challenge to adjust to social changes, hereby makes known that it is the policy of Delaware State College:

1. To stand firmly for free speech, a free press, the right to petition and to be heard, peaceful assembly, peaceful protest, the free exchange of ideas and all other constitutional and generally accepted human rights, subject always to the obligation that each individual, in exercising such rights, shall act with due restraint to avoid abridging the rights of another.
2. To acknowledge and support the foregoing as the corner stones of American Democracy, making certain that the official position of the College is never in violation of these freedoms.
3. To insist that every segment of the College community exercise reasoned judgement in the solution of all problems.
4. To make clearly understood that vandalism, disruptive activity, taking over or otherwise occupying or using the College grounds, buildings or facilities without proper authorization, intimidation and violence are unacceptable modes of behavior and will not be tolerated.
5. To rely upon the President and the Dean of Students, to act on behalf of the Faculty and Trustees promptly and directly in emergency situations subject to appropriate review procedures.
6. To approve the appointment of a Trustee-Faculty-Student Committee as a means of communication between the various segments of the College community.
7. To authorize and encourage student participation in the following committees of the Faculty: athletics, health and food services, library, student union, discipline, student personnel, lyceum, scholarship, and assembly.
(The number of students to serve and enjoy voting privileges on the respective committees to be determined in each case by the Faculty.)

Continued . . .

8. To reserve membership on all other Faculty committees, including particularly the Faculty Executive Committee and the Committee on Curriculum, exclusively to the appropriate Administrative Officers and the Faculty.
9. To authorize provision by the Faculty of a student judiciary system wherein certain disciplinary matters will be handled by students, subject to appeals to a student appeals committee of the faculty.
10. To treat all students and other members of the college family with unequivocal equality free of any discriminatory practices.
11. To insure that all students shall be welcome to participate fully in student college life including all authorized college organizations and activities without exception.
12. To inaugurate, in keeping with contemporary social changes and the desire of interested students, a program on Afro-American studies to promote an awareness of the history, art, culture and contribution of of black people to the total progress of our nation.
13. To reaffirm that the President has full authority and responsibility to handle all day-to-day operations of the College including approval of all major decisions below the Trustee level.
14. To reserve to the Board of Trustees, as provided by law, the right to approve, reject or modify, as it sees fit, all matters pertaining to the College.
15. To apply the provision of over-all college policy, as herein set forth equally to all segments of the college family including without exception all full-time, part-time, regular or temporary students and employees of every classification.

The Board of Trustees of Delaware State College has confidence that, although in a college community, as elsewhere, differences of opinion are expected, and in fact, are often a sign of desirable vitality, every problem can best be resolved if approached with civility befitting an academic environment.

No regulations of the College shall supersede, displace, or exist in conflict with this policy statement of the Board of Trustees.

August 14, 1968

IV Finances

Statement of Income -- 1967-68

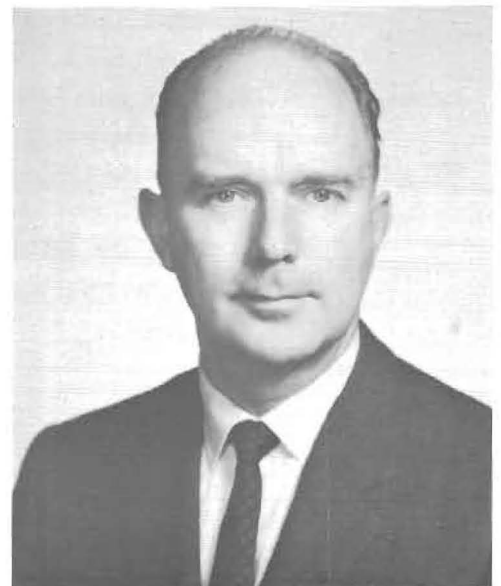
State Appropriation	\$1,041,900.00
Student fees and other income	820,099.79
Total	<u>\$1,861,999.79</u>
Capital Improvement Appropriation	1,495,000.00
Grand Total	<u>\$3,356,999.79</u>

Financial Aid to Students -- 1967-68

It is the policy of the college to award financial assistance on the basis of individual need. In most instances, deserving and qualified students are aided with a combination of scholarships, grants-in-aid, work grants and loans. In this way, the college makes its limited funds available to a maximum number of students.

Scholarships awarded this year totaled \$413,553.00, distributed as follows:

1. Athletic Work-Aid	\$ 40,760.00
2. National Defense Student Loan	67,613.00
3. State Scholarships	50,000.00
4. Track A Scholarships	3,000.00
5. Music Scholarships	6,525.00
6. Work Study Program	143,255.00
7. Economic Opportunity Grants	98,125.00
8. Special Scholarship Gifts	4,275.00
TOTAL	<u>\$ 413,553.00</u>



Mr. Edward T. Crawford
Business Manager
M.C.S.; C.P.A.

RECOMMENDATIONS

Delaware State College continues in its determination to provide the highest quality education possible, consistent with its resources for all of its students and to become a truly distinguished small college.

To this end, we recommend

That the Board of Trustees, faculty, students, and alumni be especially commended for their all out effort, assistance, and concern in resolving many of the student-related problems of the 1967-68 school term.

That the newly created Trustee-Faculty-Student Committee continue to function during the next school term.

That the college establish a new Administrative Office of College Development to coordinate Alumni Affairs, Public Relations, Fund Raising and Institutional Research and statistics.

That the college continue and even step up its effort to attract more Public and Private financial support.

That the Trustees actively seek a better pension-retirement plan and other benefits for all college employees.

That Faculty and Staff salaries be made more competitive with Institutions with whom we must compete.

That the College seek funds in the 1971 fiscal capital budget to construct and equip a modern Library with at least 100,000 volumes by September 1, 1971.

That Loockerman Hall -- an early 18th Century Manor House -- be completely restored, hopefully beginning July, 1969.

That the College undertake a feasibility study for an evening degree program.

That the college provide additional Faculty-Staff housing and initiate some housing units for married students.

