

THE  
DELAWAREAN  
1947











# Foreword

This year for the first time, the Senior Class of Delaware State College has undertaken to publish a full-fledged year-book. We have attempted to achieve our conception of a publication worthy of the school. The task has not been an easy one, since we had to start from the very beginning to learn how to do the many tasks involved; nevertheless, we feel that this has been an invaluable experience.

Now, as we leave school, may this book keep us united despite our different roads of life. May it bind us together in happy memories of what Delaware State College has meant to us. If The Delawarean of 1947 accomplishes this, we have achieved our goal.

# Presentation

*To the Future of*

## DELAWARE STATE



LOCKERMAN HALL

Somebody said that it couldn't be done, but we with a chuckle replied that "maybe it couldn't," but we would be one who wouldn't say so till we tried. So we buckled right in with the trace of a grin on our faces. If we worried we hid it. We started to sing as we tackled the thing that couldn't be done and we did it.

Somebody scoffed: "Oh, you'll never do that, at least no one ever has done it," but we took off our coats and we took

off our hats, and the first thing we knew we'd begun it. "With a lift of the chin and a bit of a grin, without any doubting or quiddit, we started to sing as we tackled the thing that couldn't be done, and did it."

There are thousands to tell you it cannot be done, there are thousands to prophesy failure; there are thousands to point out to you one by one, the dangers that wait to assail you. But just buckle right in with a bit of a grin, just take off your coat and go to it; just start in to sing as you tackle the thing that "cannot be done"—We've done it.



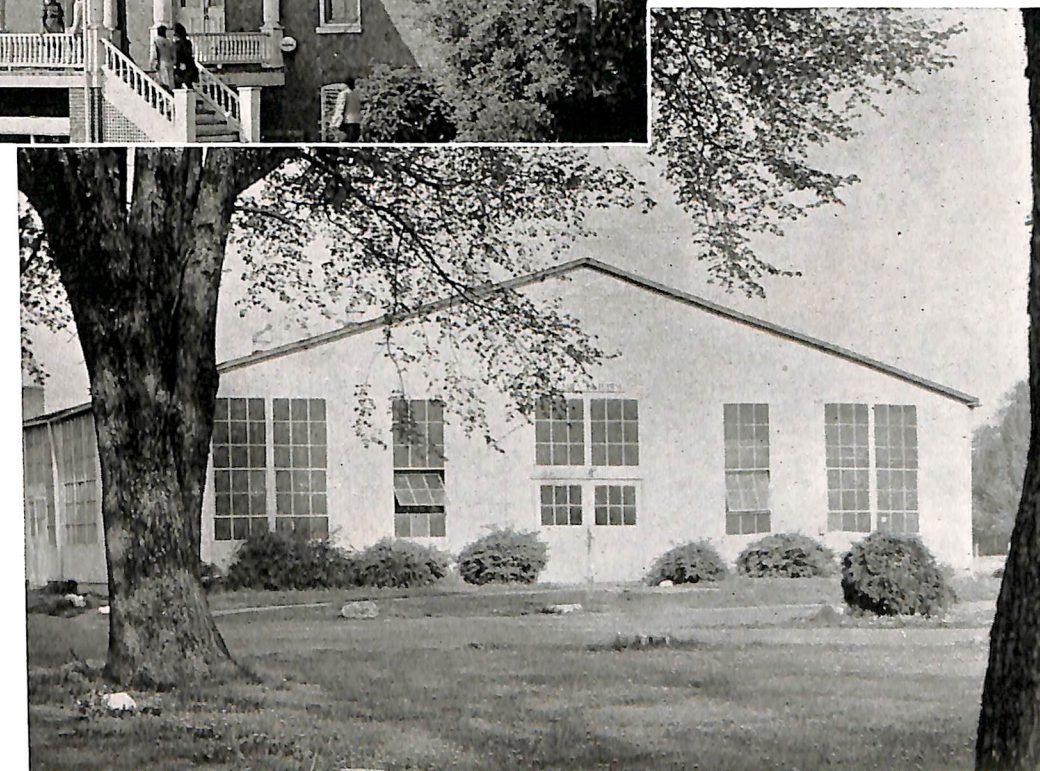


DELAWARE HALL AND CIRCLE

LORE HALL



LOVED  
ALMA  
MATER



TRADES BUILDING

THY CHILDREN GREET THEE





G O D  
B L E S S  
T H E E

. . . . . A N D T H I N E

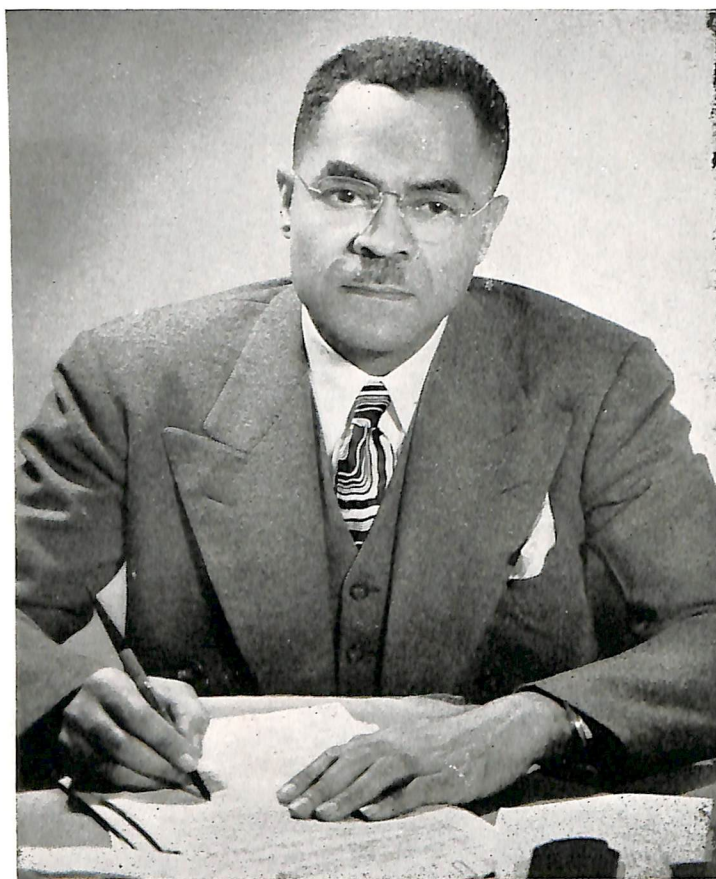


# ADMINISTRATION





## GREETINGS FROM THE PRESIDENT



DR. HOWARD D. GREGG, A.B., B.D., M.A., PH.D., LL.D.

THE CLASS OF 1947 deserves commendation upon the publication of this year book and upon their vision and optimistic attitude for the future.

As the class leaves the college they will go into a perplexed and not altogether cooperative world. Civilization today is in a state of confusion, finding its way anew—and progress towards democratic human relations is practically at a standstill. Into such an arena you are sent forth from the hallowed walls of your Alma Mater.

Parents, teachers, and friends expect you to succeed regardless of obstacles, and all of us have confidence in your ability to master the duties that are ahead. If you make the impression upon your time, as we hope you will, it will be because you have decided to follow certain virtues and ideals. Perhaps you have heard of them before but as a final admonition they may be called to your attention again.

The first, and one of the most important ideals, is that of industry. It

will be the basis of your rise and its absence may be the cause for your fall. Without the shedding of blood there was no remission of sin and without diligent industry—hard work on your part—there will be no advancement in this competitive age.

Another virtue equally as important is the ability to follow the higher self. Call it conscience, the voice of God, or Judgment,—it is doubtless the same. As a free agent one may go either to the right or the left but his future will most likely depend upon the choice that is taken. No more important admonition could be given than that you should at all times think before you act and should give your higher and nobler self an opportunity to direct your life.

Finally I should admonish you about love. The absence of this virtue has caused the destruction of civilization, whereas its presence has been the lubricant for philanthropy, peace, happiness and good will. Love of God, love of neighbor, love of truth, may well be the star to guide you on through life.

Industry—Conscience—Love—without these you have failed already, but with them your future is practically assured.

HOWARD D. GREGG  
*President*



THOMAS P. FRASER, B.S., A.M.  
*Dean of College, Registrar, Biology*

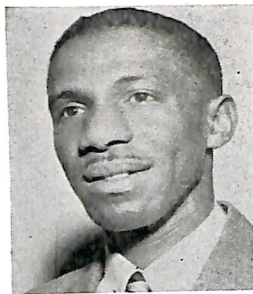


CORA E. WARREN, A.B.  
*Dean of Women*



IDEL W. E. TAYLOR,  
A.B., S.T.B., M.A.  
*Dean of Men and Chaplain*





THOMAS W. HENRY, JR., B.S.  
*Business Manager*



WILLIAM R. WYNDER, B.S., M.A.  
*Personnel Director*



MABEL C. GREGG, B.S.  
*Assistant Librarian*

JOSEPHINE S. CHANDLER, B.S.  
*Dietitian*

WILLIAM H. A. BOOKER, A.B., A.M.  
*Coordinator of Veterans Affairs*



THOMAS R. CONRAD, B.S.  
*Health and Physical Education*



ELLA HUTCHINSON, B.S.  
*Secretary to President*



EULA W. CRIDER, B.S.  
*Secretary to Dean-Registrar*



RUTH M. LAWS, B.S., M.S.  
*Home Economics*



CORRINE N. D. DEAN, B.S.  
*Home Economics*



LUNA I. MISHOE, B.Sc., M.Sc.  
*Physics and Mathematics*



ASA H. GORDON, A.B. LL.B., M.A.,  
Litt.D.  
*Social Sciences*



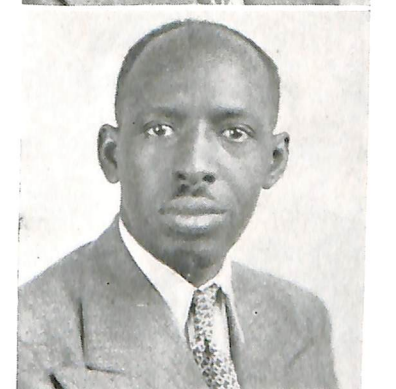
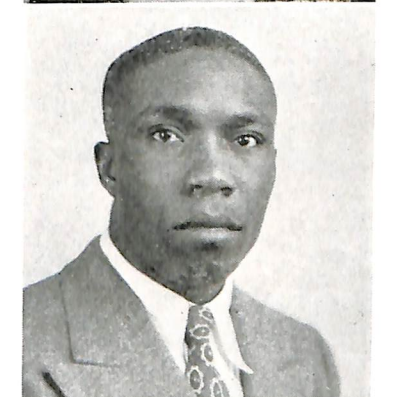
HARDY O. PIERCE, B.S.  
*Industrial Arts*



HORTENSE HOLLOWAY, A.B., M.A.  
*Social Sciences*



LILLIAN R. SOCKUM, B.S.  
*Education*







W. H. A. BOOKER, A.B., A.M.  
*Languages and Literature*



I. W. E. TAYLOR, A.B., S.T.B., A.M.  
*Philosophy and Psychology*



MARION S. TOOKES, A.B.  
*Science and Mathematics*



NANNIE D. WATERS, B.S., M.S.  
*Home Economics*



COURTNEY W. STEVENSON, B.S.  
*Home Economics*

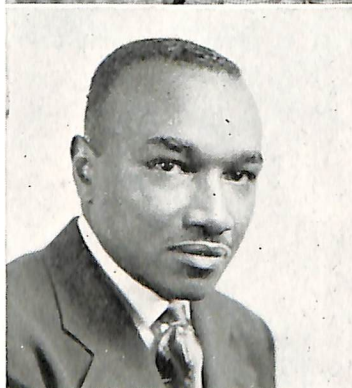
HAROLD D. WEAVER, B.A., M.A., Ed.D.  
*Education*

HENRY A. WIGFALL, B.S.  
*Agriculture*

GENEVIEVE WISNER, B.Mus.Ed.  
M.Mus.Ed.  
*Music*

W. R. WYNDER, B.S., M.A.  
*Agriculture*

IEDA T. WYNNE, A.B.  
*English*



## THE CAMERA SHY

DR. THEODORA BOYD, *Romance Languages*

MISS LILLIAN GARY, *Librarian*

MRS. EVELYN EASTERLY, *Physical Education and Principal of High School*

MISS H. RUTH WILLIAMS, *Chemistry*

MR. M. TALBERT, *Agriculture*

MR. WAYMAN SCOTT, *Agriculture*

MRS. GLADYS WEAVER, *History, High School*

MISS RUTH THOMAS, *English, High School*

MR. HILLIARD HARRIS, *Auto Mechanics*

MISS LOUISE WALLER, *Matron*

MISS HATTIE MONTAGUE, *Secretary to Business Manager*

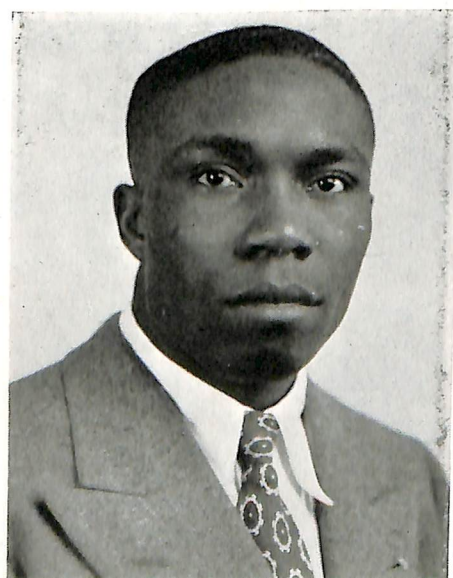




## D E D I C A T I O N

*We*, the Senior Class of 1947, deem it  
an honor to dedicate our year book

"The Delawarean" to our sponsors, Mrs. Genevieve Wisner and Mr. Luna Mishoe.  
Their guidance and inspiration have kindled within us a flame of integrity, per-  
severance and initiative which will never die. May their untiring works and per-  
sistent efforts continue to erect mon-  
uments to culture among our youth.



## O U R G O A L

TO TAKE "I CAN" FOR A MOTTO, SAY IT MIGHT-  
ILY AND TRULY, THEN RIVET AND CLENCH IT  
BY MANLY AND HEROIC DEEDS, AND MAKE IT  
THE REAL SECRET, THE TRUE PHILOSOPHY, OF  
OUR LIVES. THAT DONE, WE WILL GO FORTH  
AND MAKE OURSELVES AND THE WORLD JUST  
WHAT WE PLEASE.

## C L A S S M O T T O

"TIME WASTED IS EXISTENCE; USED IS LIFE"

## C L A S S S O N G

*Tune: Lover Come Back To Me*

We came a class, we've had our stay,  
Our day is past, we're going away;  
Our memories will keep returning,  
Dear ol' State, we love thee so.

This Campus glows amid peace and green,  
Long will we cherish each immortal scene;  
Our memories will keep returning,  
Dear ol' State, we love thee so.

*Refrain:*

We've tread thy hall of wisdom  
And we've had our share of fun.  
Now we are leaving.  
Every street of life we walk  
You'll walk along it too,  
Always achieving.

We shall not fail in whatsoe'er we do,  
We know thy guidance will see us thru;  
And now we heed life's call our zeal forever burning.  
State we will remember thee.

CLIFTON T. BROWNE



# SENIORS...

Go to your work and be strong, halting not  
in your ways,  
Balking the end half-won, for an instant's  
dole of praise.  
Stand to your work and be wise,  
certain of sword and pen,  
Beings neither children, nor gods,  
but men in a world  
of MEN.

*Editor-in-Chief*



CLIFTON BROWNE

## EDITORIAL STAFF

*Associate Editor*

*Activities Editor*



HILDA NORWOOD

ELSIE YOUNG

*Class Editor*

*Business Manager*



CLARA NEWKIRK

JARRIET WARNER

## OTHER STAFF MEMBERS

PAUL ROBINSON

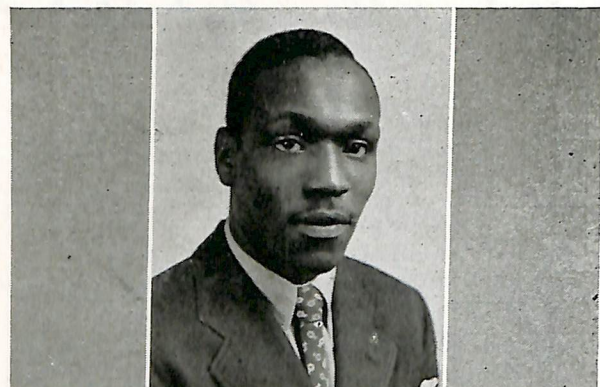
WILLIAM L. SHOCKLEY

HARRY R. WILLIAMS

WILLIAM N. PINKETT



# S E N I O R C L A S S O F F I C E R S



*Top:* John E. Cottman, president; *left top:* Harry R. Williams, vice president; *right top:* Druzella Wilkerson, secretary; *left bottom:* Hilda Norwood, assistant secretary; *right bottom:* Bertha M. Allen, treasurer; *bottom:* W. Nadal Pinkett, business manager.



ALLEN, BERTHA MARY  
"Bert"  
LEWES, DELAWARE  
ELEMENTARY EDUCATION

Y.W.C.A.; Du-Ed. Hobby: cooking.



BROWNE, CLIFTON THEODORE  
"Pudge"  
WILMINGTON, DELAWARE  
SECONDARY EDUCATION

Y.M.C.A.; President's Cabinet; Lantern Staff '39, '39; Kappa Alpha Psi; Vets Organization; Football '39, '40, '41; Male Glee Club, Choir: '40, '41, '42; Hobby: Getting around.

"The man who knows how will always have a job; but the man who knows why will always be his boss."

CARROLL, MARJORIE GENEVIEVE  
"Margie"  
LUTHERVILLE, MARYLAND  
ELEMENTARY EDUCATION

Y.W.C.A.; Du-Ed; Choir—Lantern Staff; Hobby: Singing, reading.



CAULK, FERDINAND JUNIUS  
"Junior"  
TOWNSEND, DELAWARE  
CHEMISTRY

Y.M.C.A.; Omega Psi Phi; Baseball.







COTTMAN, JOHN EARL  
*"Cotty"*  
 BALTIMORE, MARYLAND  
 VOCATIONAL AGRICULTURE

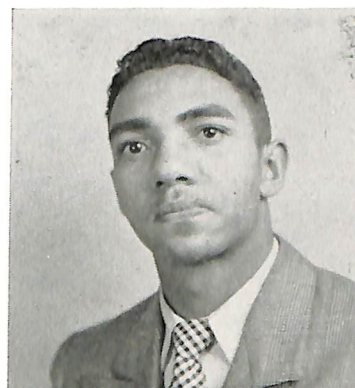
Class President 1945-46-47; President of Agriculture Club; Y.M.C.A.; Omega Psi Phi Fraternity; Football, Basketball, Baseball.



EVANS, REBECCA  
 NEWPORT, DELAWARE  
 ELEMENTARY EDUCATION

FLETCHER, ERNEST  
*"Fletch"*  
 DENVER, COLORADO  
 CHEMISTRY

Y.M.C.A.; Football.



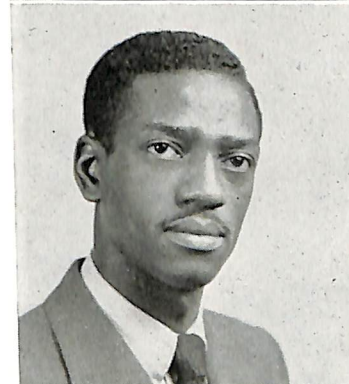
GREGG, HOWARD DECKER, JR.  
*"Reds"*  
 DOVER, DELAWARE

Motto: Excelsior; Kappa Alpha Psi.



GRIFFIN, REBECCA ELIZABETH  
*"Becky"*  
 BRIDGEVILLE, DELAWARE  
 HOME ECONOMICS

Y.W.C.A.; Home Economics Club; Basketball; Hobby: Riding.



HONEMOND, MAXWELL  
*"Max"*  
 WASHINGTON, D. C.  
 INDUSTRIAL ARTS

Y.M.C.A.; Kappa Alpha Psi; Male Glee Club; Hobby: Flying.

"It's just as easy to think big as it is to think in a small limited way."

HYLAND, SUSAN COVERDALE  
 LAUREL, DELAWARE  
 ELEMENTARY EDUCATION

Motto: The Golden Rule.



JOHNS, THEODORE ROOSEVELT  
*"Teddy"*  
 PHILADELPHIA, PENNSYLVANIA  
 AGRICULTURE

Omega Psi Phi; Y.M.C.A.; Agriculture Club; Hobbies: Boxing, Tennis.







KELSON, NEHEMIAH ALPHONSO  
*"Mac"*  
 EASTON, MARYLAND  
 VOCATIONAL AGRICULTURE

Y.M.C.A.; Male Glee Club; Choir; Male Quartette; Kappa Alpha Psi.



NEWKIRK, CLARA LEE  
*"Happy"*  
 RICHMOND, VIRGINIA  
 PSYCHOLOGY

Y.W.C.A. — Du-Ed Club; President's Cabinet; Founder and President of Progressive Club; Lantern Staff; Psychology Club.

PINKETT, NADEL WILLIAM  
*"Bill"*  
 DENTON, MARYLAND  
 SECONDARY EDUCATION

Y.M.C.A.; Kappa Alpha Psi Fraternity.



NORWOOD, HILDA CHRISTINA  
*"Teenie"*  
 LEWES, DELAWARE  
 ELEMENTARY EDUCATION

Y.W.C.A.; Du Ed; Guild Players; Lantern Staff; Psychology Club.



ROBINSON, MILDRED ARMANDA  
*"Mil"*  
 WILMINGTON, DELAWARE  
 HOME ECONOMICS

Y.W.C.A.; Home Economics Club; Alpha Kappa Alpha; Hobby: Sewing.



ROBINSON, PAUL NICHOLS  
*"Rev"*  
 PHILADELPHIA, PENNSYLVANIA  
 ELEMENTARY EDUCATION

Y.M.C.A.; Alpha Interest Club; Hobby: Photography.

"Those who get the most out of life are those who help others."

SHOCKLEY, WILLIAM LESLIE  
*"Rice"*  
 MILFORD, DELAWARE  
 ELEMENTARY EDUCATION

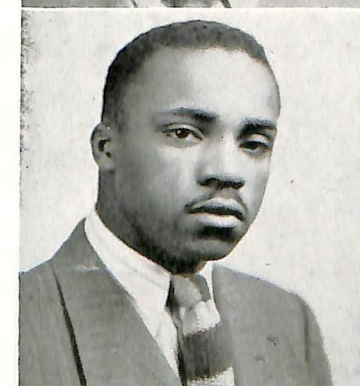
Y.M.C.A.; Du-Ed; Male Glee Club: '39, '40, '41; Kappa Alpha Psi; Football, Basketball; Hobby: Traveling.

"A coward dies a thousand deaths. A brave man dies but one."



WARNER, JARRIET WALLACE  
*"Murdock"*  
 NEW BRUNSWICK, NEW JERSEY  
 AGRICULTURE

Omega Psi Phi; Y.M.C.A.; Agriculture Club; Football; Basketball.







WATSON, ERCELL I.  
"Rev"  
DOVER, DELAWARE  
SOCIAL SCIENCE



WILKERSON, DRUZELLA  
"Dru"  
ENGLEWOOD, NEW JERSEY  
ELEMENTARY EDUCATION

Y.W.C.A.; Du-Ed Club; Secretary of Senior Class; Progressive Club Secretary; Psychology Club; Hobby: Reading.

WILLIAMS, CHARLYE BEATRICE  
"Charyle"  
WHITE PLAINS, NEW YORK  
HOME ECONOMICS

Y.W.C.A.

WILLIAMS, HARRY ROSCOE  
"Tuber"  
SMYRNA, DELAWARE  
VOCATIONAL AGRICULTURE

Omega Psi Phi; Vice President of Senior Class; Agriculture Club; Y.M.C.A.; Baseball; Basketball.

YOUNG, ELSIE  
"Slim"  
SLAUGHTER NECK, DELAWARE  
ELEMENTARY EDUCATION

Du-Ed Club; Lantern Club.



## CLASS HISTORY

IN SEPTEMBER 1943 the present Senior Class began its college career. We organized our class, with Miss Hortense Williams as our adviser. As green and shy as Freshmen usually are, we struggled through the early days of initiation to a rather successful year.

Planning a chapel program was quite a task for us then. However we displayed our ability to overcome such a task by successfully presenting Geneva Browne, soprano soloist, of Wilmington, Delaware.

Among the outstanding social events were the banquet given for us by the Sophomores and the Sophomore-Freshman Prom at which we entertained the Sophomores. This affair was considered the best of the year.

During the year two of our members, Charles Elliott and Clarence Fields were called to the armed forces.

As Freshmen we successfully mastered the subjects taught us and in September took our places as sophomores. Our adviser for the year was Mrs. Genevieve Wisner, who came to us from Boulder, Colorado. There were fourteen classmembers.

As we had grown in knowledge we had created the desire to do big things. In February 1945 we presented Clyde Winkfield, noted pianist, in recital. At this affair we set an example for all future affairs of that type. Since that affair the class of '47 has stood for the more cultural things.

This school year Leon Brummel and Charles Caldwell of our class were called to the armed forces. Despite the small enrollment our class remained very active.

On September 15, 1945, we entered this institution as sophisticated Juniors. We realized we shared the responsibilities of upper classmen. We had to be leaders and we were sure we could lead. Class Officers for the year were: President, John Cottman; Vice President, Elsie Young; Secretary, Hilda Norwood; Assistant secretary, Druzella Wilkerson; Treasurer, Marjorie Carroll. With Mrs. Genevieve Wisner and Mrs. Lillian Sockum as advisers, we began very early to plan the work of the year. On December 7, 1945 we gave a Pearl Harbor dance which was enjoyed by the student body.

In February 1946 Harry Williams and William Shockley entered our class. They were members of the class of '44 who had been called to the service. They were proud to continue their education with a class as active as the class of '47.

For our cultural offering of the year we presented Philippa Duke Schuyler, child pianist, and Marie Joe Brown, dramatic reader, in recital. Needless to say, this affair was a great success. Our closing affair was an Egyptian Soiree, where we entertained the class of '46.

When we entered in September 1946 as seniors, our enrollment had increased. The increase was due largely to the return of veterans of World War II. Theodore Johns, formerly of the class of 1938, Maxwell Honemond of the class of 1942, Clifton Browne of the class of 1943 and Nadal Pinkett of the class of '44 joined us.

Our advisers for the year were Mrs. Genevieve Wisner and Mr. Luna Mishoe.

We were faced with many and varied tasks, as most senior classes are.

We elected as our class officers: President, John Cottman; Vice President, Harry Williams; Secretary, Druzella Wilkerson; Assistant Secretary, Hilda Norwood; Treasurer, Bertha Allen; Business Manager, Nadal Pinkett. Clifton Browne and Nadal Pinkett were elected to serve on the President's Cabinet.

We began our year's work immediately. Important social events were a dance given for the student body on December 7, 1946 and the Clyde Winkfield recital and reception February 28, 1947.

The class of 1947 took the responsibility of publishing a college year book. Since it was the first one to be published at the college the work was difficult, but because of our ability and diligence we succeeded.

This class has been represented in all activities of the college campus. We have been represented on the gridiron by David Nickerson, Ferdinand Caulk, John Cottman and Ernest Fletcher. In basketball we were represented by William Shockley, John Cottman, Rebecca Griffin, Elsie Young and Hilda Norwood. Nadal Pinkett, Marjorie Carroll, Clifton Browne, William L. Shockley and Theodore Johns have been very active in the musical life of the school. Elsie Young, Mildred Robinson, Rebecca Griffin, Clifton Browne and Hilda Norwood have served on the college Lantern Staff. All of the members of this class belong to some of the organizations on the campus.

Among us are 14 members of the Dean's Honor List; some who have been honor students throughout their college years.

In spite of the fact that the class of '47 will be a great loss to Delaware State College, we must go forth to success, fame and worthy achievement so that our names may be recorded in still other histories.



## CLASS PROPHECY

Listen, O ye men and women, youth and maidens and little children.

Listen to the words of wisdom from the lips of the prophet, who now speaketh unto you what has been revealed unto her, even as it hath been decreed by the powers that be. For it has come to pass, that the veil of the future hath been rent in twain, even as it was in twain in the days of the wise prophets of old, and the spirit of prophecy hath descended from the spheres to envelop my soul with her mystic powers. Aye, I say unto you, men and women, youths and maidens, and little children, it hath been given unto me as the chosen one of this great and good people, the Class of 1947, to dream strange dreams and to see strange visions of the glories of the years to be.

As I look into the land of the future, I discern among the dim shadows of the people yet to be, the familiar shapes of those fair and radiant beings who were once my classmates at Delaware State College, now changed and transformed to the citizens of the world outside even as they long hoped to be. And it came to pass that the veil before mine eyes grew yet more and more thin by the intensity of my vision and behold I could see them, as if the intervening years were not at all.

Nadal Pinkett, now happily married to Elizabeth Parker, is "plucking" the piano and exercising his vocal chords at the exclusive Bennie George's night club.

Bertha Allen is now making Hampton Turner a "bossy wife."

Maxwell Honemond and Nehemiah Kelson are "Cabinet members in the White House."

Rev. Charles Gerald is now presiding Bishop of the Delaware Methodist Conference.

Mildred Robinson, with her family of twelve, is finding "love in a cottage" simply grand.

Rebecca Griffin is telling Susie Hyland about Druzella Wilkerson's sixteen children, who inherited all of Dru's mannerisms.

Howard D. Gregg, Jr., is a surgeon and is about to operate on his first patient, Marjorie Carroll.

Jarriet Warner is now an expert cook at "The Theodore Johns Hotel." Eat a piece of his meat and believe me you'll drop.

Harry Williams is head of the agriculture department at Delaware State College.

Charyle Williams is a faithful church worker for her pastor, the Rev. Paul Robinson.

Ferdinand Caulk and Ernest Fletcher are doing research on atomic power.

Rebecca Evans, Agnes Hovington and Lena Bleen are successful teachers at Booker T. Washington High School.

Leslie Shockley is principal of the new Milford High School.

David Nickerson, now a famous lawyer, is telling Ercell Watson how to rear his children.

Jessie Luke and Elsie Young are actresses in Hollywood.

John Cottman is in court telling the judge: "I'd rather go to jail than go back to Hilda Norwood and have her knock my block off."

Clifton Browne, who is head of the Atlanta University School of Social Work, is now writing his seventh book on sociology.

And verily, as I behold the scene and marvelled thereat lo, the veil was drawn over mine eyes, shutting out from my vision the things to be and I turn my eyes back to the things that are.

Surely as coming events cast these shadows before, only goodness and truth and prosperity shall follow all the days that are to come of the fair and talented members of the class of 1947.

## CLASS WILL

We the class of 1947, after four years of earnest endeavor to take advantage of the educational opportunities of this institution, hereby bequeath the following items shall be consigned to those persons hereunder designated, when our belated footsteps have ceased to echo here:

Clifton Browne bequeaths to the class of 1948 his desire to do everything uniquely and interestingly.

Charlye Williams leaves her naive and innocent ways to Claudia Lockman.

Druzella Wilkerson and Bertha Allen bequeath to the young ladies of Lore Hall their ability to be discreet in their actions.

Marjorie Carroll leaves her voice to Virginia Hazzard so that Virginia may do what Marjorie tried so hard to do with it.

John Cottman wants Gilbert Jackson to follow in his footsteps as "Mr. Senior Class."

Hilda Norwood leaves to Leola Shockley all the knights of her court.

Theodore Johns leaves his basketball techniques to Edward Schenck, knowing that they will then be recognized.

Clara Newkirk bequeaths her rapid tempo to Sylvia Davis.

Leslie Shockley wishes the Debating Society to have his argumentative ability in the hope that they will use it constructively.

Nadal Pinkett leaves to Morris Wilson his ability to be seen without being heard.

Howard Gregg wants Charles Wade to have his playboy technique.

Mildred Robinson leaves to Annabelle Lockwood her chair in Lore Hall reception room to be used during calling hours.

Elsie Young wishes her slender figure to be carried on to fame by Olive Stewart.

David Nickerson wants Richard Maull to have his hyperbolic nature so that Richard and other kitchen personnel may use it to make the food go further.

Rebecca Griffin leaves to Blanche Watson her position as guard on the Basketball Team.

Paul Robinson leaves to Julius Boaz his theological interest.

Harry Williams wants Leon Brummel to carry on his chauffeuring.

Maxwell Honemond wishes his voice to be carried to fame by Maynard Hardwicke.

Rebekah Evans wants Delores Whittington to have her femininity.

Ercell Watson bequeaths to Le Forest Royall his scholastic ability.

Ferdinand Caulk leaves to Charles Caldwell his ability to talk to anyone.

Susan Hyland wants Alice Fields to have her earnestness of purpose.

Ernest Fletcher wants Nathaniel Johnson to do what he can with what's left of his '39 Ford.

Jessye Luke bequeaths to Lillian Welch her technique in getting and holding a stable-minded man.

The Class of 1947 bequeaths to the Class of 1948 the same guidance and sincere interest that has been given them.



# Juniors

## CLASS OFFICERS



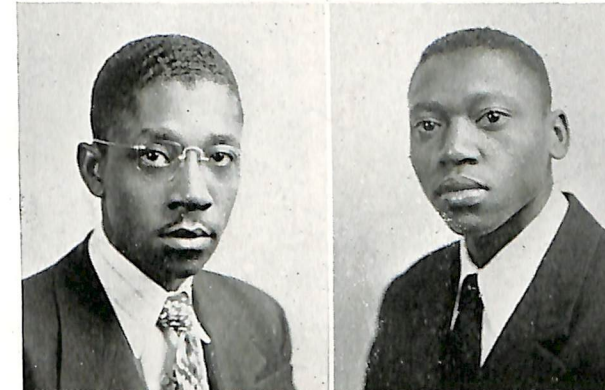
*Top:* Gilbert Jackson, president; *left:* Denver Parker, treasurer; *center:* Olive Stewart, secretary; *right:* Julius Boaz, vice president; *bottom:* Charles Wade, business manager

CATHERINE BEARD



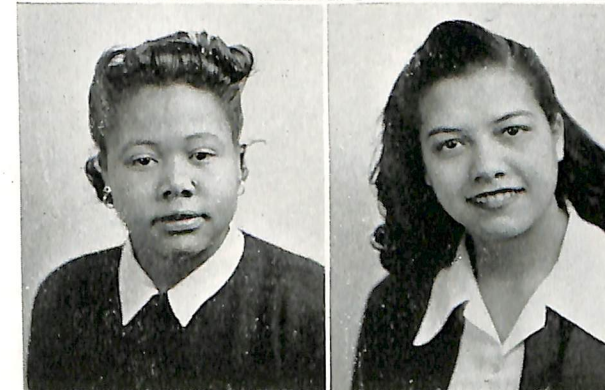
JULIUS BOAZ

LEON BRUMMEL



CHARLES H.  
CALDWELL

ROSA COLEMAN



SYLVIA DAVIS

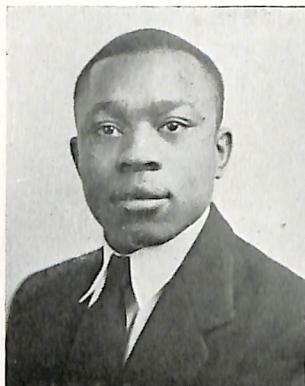
ALICE FIELDS



DORA FOREMAN



WILLIAM FREEMAN



WINIFRED GRIFFIN

MAYNARD  
HARDWICKE



VIRGINIA HAZZARD

ALAN HILL



GILBERT JACKSON

NATHANIEL JOHNSON



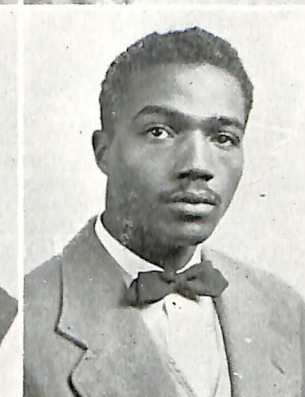
CLAUDIA LOCKMAN

ANNABELLE  
LOCKWOOD



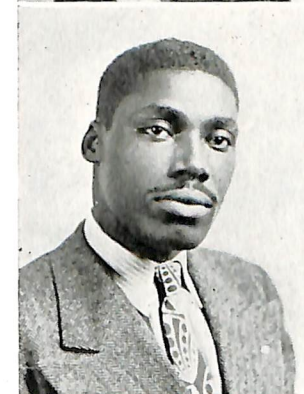
LEAH ANNA MASON

MADELYNE  
MATTHEWS



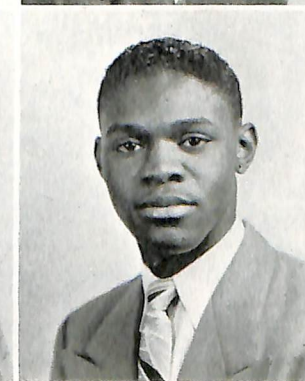
DENVER B. PARKER

MALACHI RAISIN



LEFOREST ROYALL

ETHEL MONEY ROY



EDWARD SCHENCK



LEOLA SHOCKLEY



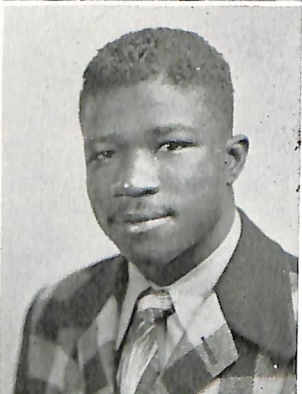
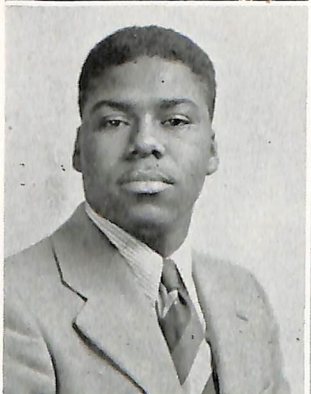
SHIVERS SPRIGGS

OLIVE STEWART



WILLIAM STEPHENS

JOSEPH SUDLER



MITCHELL THOMAS

HAMPTON TURNER



BLANCHE WATSON

LILLIAN WELCH



DELORES  
WHITTINGTON

REV. J. H. WILLIAMS



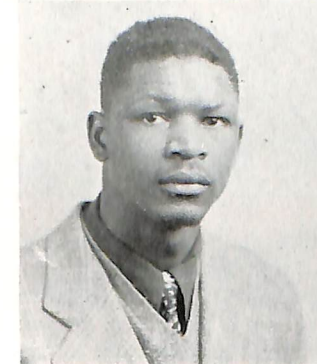
CHARLES WADE

BLANCHE WILSON



GLORIA WILSON

MORRIS WILSON





# Sophomores

## CLASS OFFICERS

*L. to R.:* Grace Bell, Treasurer; Naomi Morris, Secretary; Frances Ames, President; Walter Johnson, Vice President; Elaine Walley, Asst. Secretary



*Left to right, 1st row:* James Curtis; Reba Ross; Elaine Walley; Grace Bell; Walter Johnson; Frances Ames; Naomi Morris; Ann Tyler; Mathelle Lewis; James Muldrow. *2nd row:* Marion Sampson; Beulah Reid; Mabel Rose; Mary Woodley; Nellie White; Bertha Jones; Marion DeVall; Elizabeth Marshall; Catherine Hanshaw; John Griffith. *3rd row:* Nathan Thomas; Earlene Milhous; Pauline Walker; Elva Brown; Charles Bessellieu; Noveta Hearne; Hilda Thompson; Lorraine Hopkins; Rosabelle Adams; Harry Ingram. *4th row:* Oscar Neal; Mary Perkins; Carrie Purnell; Ethel Davis; Carolyn Gould; Wilmer Mills; Jacqueline Mullings; Gaston Finney; James Horsey; Mildred Morris; Lycurgus Gillis; Donald Spence. *5th row:* Cummins Evans; Lige Glover; Wellington Waters.

# Freshmen



*First row (seated):* Eleanor Coleman, Dennis Wilson, James Wilson, Rella Brown, Prentice Tart, Jeanette Chapman, James Kornegay, Cooper Comegys, Geneva Edwards, Raymond Woodard, Dorothea Holt, Virginia Lofland, Margaret Roberts, Earl Fields, Oscar Thomas, Ivanette Mosley.

*Second row:* William Holmes, Warren Rogers, Geneva Hariston, Kenyon Parker, Anne Bannister, James Scott, Amelia Games, Mae Stanley, Estelle Dickerson, Charles Badson, Doris Belle, Howard Dumpson, Rubena Mitchell, Monroe Hearne, Barbara Young, Mary Eggleston, Anna White.

*Third row:* James Grant, Peggy Evans, Raymond Coverdale, Hattie Metcalf, Charles Evans, George Demeritte, Daniel Coleman, John Browne, Douglas Gibson, Rosenwald Griffin, Odel Peters, Henry Moore, Claude Epps, Chester Waller, David Harmon, Oden McAllister.

*Fourth row:* William Gibbs, Charles Handy, Cora Neal, Albert Frisby, Carl Stanley, Sidney Johnson, Hosea Williams, Olive Samuels, Harrison Short, Clifton Baynard, Ralph Goldsborough, John Sims, Brooks Parker, Harlan Bolden, Joseph Marshall, Kenneth Fountain.





# ORGANIZATIONS



## Y.W.C.A.

*L. to R., first row (seated):* Geneva Edwards; Naomi Morris; Grace Bell; Katherine Hanshaw; Earlene Milhaus; Mary Eggleston. *Second row:* Mary Perkins; Eleanor Coleman; Eurethia Evans; Mary T. Woodley; Virginia Lofland; Jacqueline Mullings; Mathele Lewis; Rosabelle Adams; Hortense Holloway, Adviser. *Third row:* Nellie C. White; Geneva Harriston; Gloria Wilson; Peggy Evans; Anne Bannister; Rubena Mitchell; Lillian Welch; Olive Samuels.



## GUILD PLAYERS

Moses Gossett; Elva Stanley; Eurethia Evans; Dorothea Holt; James Kornegay; Anne Games; Annabelle Lockwood; Harry Bolden; Mrs. Wynne, Adviser



## Y. M. C. A.

*Seated:* Denver Parker, Clarence Riley. *Standing:* Nalal Pinkett, Wellington Waters, Clifton Browne



Nehemiah Kelson, Hosea Williams, Charles Wade, Donald Taylor

## QUARTET

## COLLEGE CHOIR

*L. to R. First row:* Madelyne Matthews; Gwendolyn Bivens; Gloria Matthews; Marjorie Carroll; Estelle Dickerson; Jacqueline Mullings; Virginia Lofland; Bertha Jones; Margaret Roberts; Blanche Wilson. *Second row:* LeForest Royall; James Grant; Reginald Tynes; Raymond Woodard; Nehemiah Kelson; Donald Waters; Gaston Finney; Charles Wade; James Muldrow; Gloria Wilson. *Third row:* George Beckett; Ambrose Ross; John Sims; Hosea Williams; Alphonso Coles; Henry Nutter; Theodore Johns; William Henry; George Dredden.



## MALE GLEE CLUB

*L. to R. First row:* James Grant, Reginald Tynes, Raymond Woodard, Nehemiah Kelson, Donald Watrs, Henry Nutter, Charles Wade, James Muldrow. *Second row:* George Beckett, Ambrose Ross, John Sims, Hosea Williams, Alphonso Coles, Gaston Finney, Theodore Johns, George Dredden, William Henry.



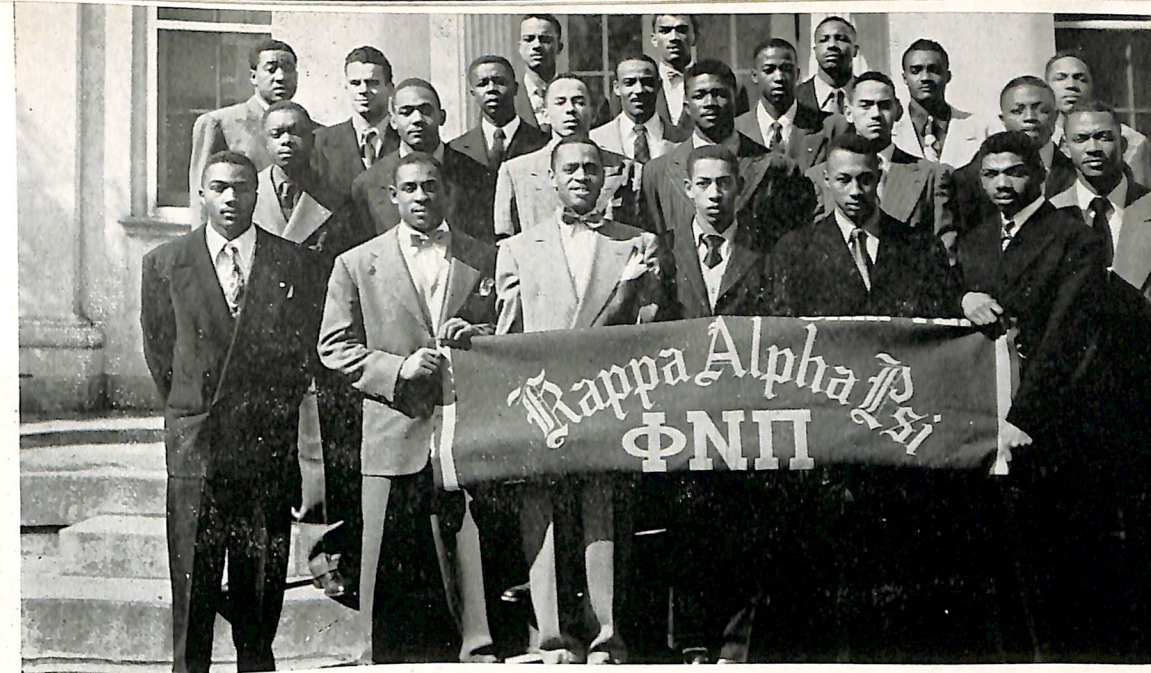
## PRESIDENT'S CABINET

*Standing:* Denver Parker, Clifton Browne, Cooper Comegys, Clay Aldridge  
*Seated:* Grace Bell, Annabelle Lockwood, Dr. Gregg, Naomi Morris, Dorothea Holt



## COMMERCIAL CLASS

*Seated:* Clifton Browne, Lillian Welch, Reginald Tynes, Naomi Morris  
*Standing:* Mrs. Eula Crider, Miss Hattie Montague, Miss Ella Hutchinson—Instructors



## KAPPA ALPHA PSI FRATERNITY

*First row:* Denver Parker, Gilbert Jackson; Maynard Hardwicke; Charles Bessellieu, William Days, Carl Collick. *Second row:* Richard Maull, Fred Bullard, Howard Gregg, Jr., Mitchell Thomas, Kermit Jackson, William Stephens, Clifton Browne. *Third row:* Nehemiah Kelson, Donald Spence, Wilmer Mills, Walter Johnson, Alan Hill, Bennie George, Shivers Spriggs. *Fourth row:* Wellington Waters, William Bayne, Julius Boaz.

## GREEKDOM

### SCROLLERS CLUB

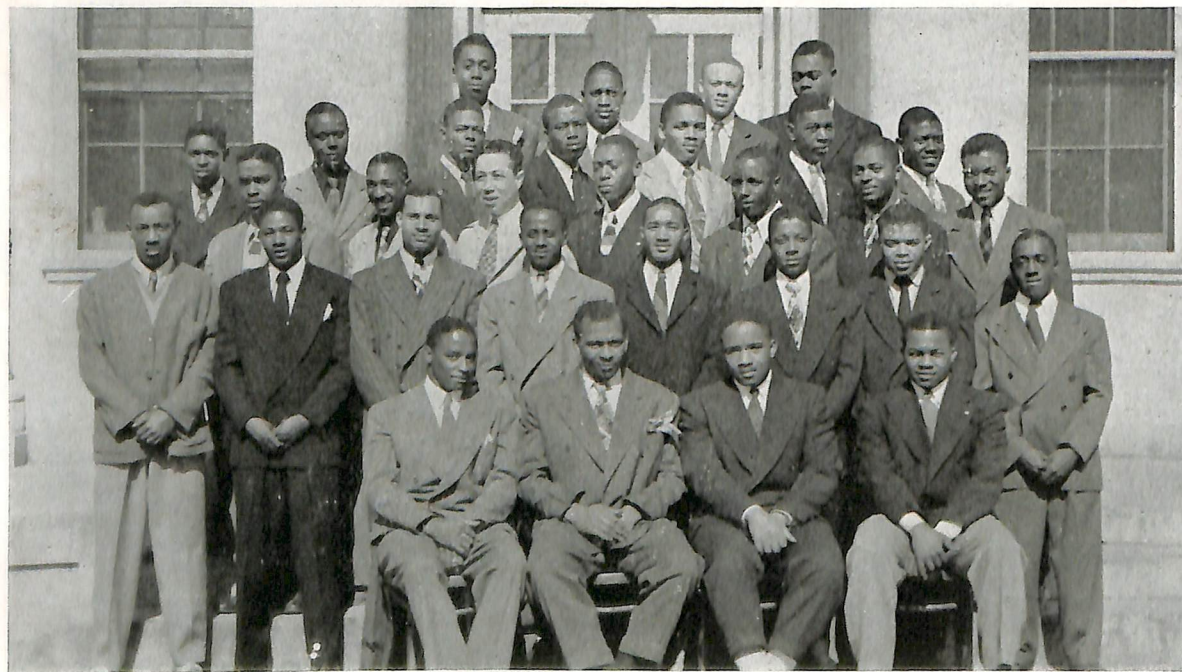
*First row:* Raymond Woodard, Rudean Lumpkin, William Holmes, Grant Stephens, Oscar Neal. *Second row:* Harlan Bolden, Ernest Bundy, Oscar Thomas, Ronald Garlic, Harrison Short, William Hearne, John Brown. *Third row:* Oscar Bullock, William Holliday, Monroe McConnell, Monroe Barrick, Frederick Holliday, Martin Evans, Douglas Gibson, Emory Boggus. *Fourth row:* Charles Badson, Joseph Sims, William Rich, Daniel Hanks.





## OMEGA PSI PHI

*First row:* Taylor Wheeler, Jarriet Warner, Clay Aldridge, John Cottman  
*Second row:* Felmon Motley, William Freeman, Clifton Harmon, Harry Williams  
*Third row:* Nathaniel Johnson, Hampton Turner, Albert Raisin, James Curtis, Morris Wilson, James Harris



LAMPODAS CLUB

## ALPHA INTEREST CLUB

### Aspirants for Alpha Phi Alpha Fraternity

*Fornt row:* William Lamb, Charles Wade, Clarence Riley, James Price. *Second row:* Stanley Hopson, John Williams, Rhett McGriff, Oscar Harris. *Third row:* James Grant, Reginald Tynes, Alphonso Coles, Moses Gossett, Paul Robinson.



## HOME ECONOMICS CLUB

*Seated:* Mrs. Nannie Waters, Adviser; Blanche Watson; Nellie White; Carolyn Gould; Elizabeth Marshall; Virginia Hazzard; Mrs. Ruth Laws, Adviser. *Standing:* Margaret Roberts; Virginia Lofland; Ethel Wilson.



## INDUSTRIAL ARTS CLUB

Hampton Turner, Douglas Gibson, Frank Holmes, Rosenwald Griffin, John Sims, Harrison Short



## HIGH SCHOOL

*First row:* Charles Handy, Gloria Matthews, Ambrose Ross, Augusta Harris, George Beckett, Marion Brown, Dolores Burton, George Dredden, Helen Handy, William A. Henry, Gloria Chaney, Madeline Jackson, Gloria Mosley, Henry Nutter, Frances Harmon. *Second row:* Florence Higgins, Susan Perkins, Othello Molock, Leola Reed, Marvin Minus, Pauline Scott, Elizabeth Perry, Inez Johnson, Elaine Burton, Helen Gowens, William Holmes, Adelyn Wilson, Mary Holden, Celeste Teagle, Beatrice Handy. *Third row:* Gwendolyn Bivens, Josephine Sudler, James Carroll, Hanson Young, Iona Harmon, Clarence Young, Irvin Berry, Margaret Daniels, Lester Scott, Mildred Harris, Lorraine Vann, Allen Tyler, Naomi Benson, Roberta Hearne, Cordelia Christian, John Ringgold. *Fourth row:* William H. Henry, Daniel Pritchett, Susie Hart, Joseph Hicks, Edward Empson, Marion Berry, Ruth Andrews, Barbara Bordley, Donald Waters, Clarence Frisby, Roy Pettyjohn, Rosella Jackson, Iris Bowers, Homer Minus, Millard Mosley, Estele Arnell, Ella Goldsborough.

# To: THE VETERANS *on the Campus*

Whatever you do, you need courage. Whatever course you decide upon, there is always some one to tell you you are wrong. There are always difficulties arising which tempt you to believe that your critics are right. To map out a course of action and follow it to the end, requires some of the same courage which a soldier needs. Peace has its victories, but it takes brave men to win them.

Fellows! there is great power in a resolution that has reservation in it—a strong, persistent, tenacious purpose—which burns all bridges behind it and which clears all obstacles from its path and arrives at its goal, no matter how long it may take, no matter what the sacrifice or the cost. Any kind of a human being can wish for a thing, can desire it; but only strong, vigorous minds with great purpose can do things. By returning to school, you've shown that "you have what it takes." Stick to your guns and more power to you.



# SPORTS

## COACHES

COACH THOMAS "TANK" CONRAD



ASSISTANT COACH L. R. "GREENIE" EASTERLY



ASSISTANT COACH NATHANIEL "NAT" JOHNSON





## DELAWARE STATE "HORNETS" FOOTBALL TEAM



*Bottom row:* Besselieu, Motley, Collick, Peterson, Aldridge, Butler, Hart, Hart, Boyd, Stevenson  
*Second row:* Glover, Boggus, Stevenson, Price, Eppes, Spence, Dunbar, Tyler, Wheeler, Spencer, McCallister  
*Third row:* Buntin, Motley, Freeman, Thomas, Badson, Gwathney, Jackson, Davis, Moore, McKenzie, Cottman  
*Top row:* Bullock, Sims, Stevenson, Boaz, Bundy, Hicks, Harmon, Taylor, Days, Dumpson, Caulk

### Scores

Delaware 6	North Carolina 32
Delaware 6	Morgan 22
Delaware 6	Lincoln 19
Delaware 42	Princess Anne 6
Delaware 0	Hampton 12
Delaware 19	Howard 6
Delaware 12	Winston Salem 7
Delaware 50	St. Paul 0
Delaware 7	Florida 6
Flower Bowl Game	



*First row:* Elva Browne, Rebecca Griffin, Claranese Black, Dorothea Holt, Lorraine Hopkins. *Second row:* Jeanette Chapman, Noveta Hearne, Alice Fields, Naomi Morris, Carrie Purnell. *Third row:* Hilda Norwood, Beulah Reid, Blanche Watson, Rella Brown. *Standing:* Miss Ruth Thomas (coach), Julia Douglas (manager).

### GIRLS' BASKETBALL TEAM

Delaware State College 23	Mercy Nurses 29
Delaware State College 15	Cheyney 38
Delaware State College 39	Wilmington "Y" 13
Delaware State College 37	Coppin Normal 32
Delaware State College 25	Mercy Nurses 13
Delaware State College 22	Freedman's Nurses 35
Delaware State College 15	Wilmington "Y" 13
Delaware State College 22	Cripus Attucks 28
Delaware State College 15	Cheyney 28
Delaware State College 17	Coppin Normal 24
Delaware State College 13	Howard University 38
Delaware State College 20	Freedman's Nurses 50
Delaware State College 15	Delaware State Alumni 14



AUTOGRAPHS

PATRONIZE  
OUR  
ADVERTISERS



# KERSHAW STUDIO

10th and King Street  
Wilmington, Delaware

**Photographer for the Delawarean**

*FOR THE BEST PORTRAITS OF YOURSELF VISIT THE*  
**KERSHAW STUDIO**

*Compliments of:*

**JAMES E. MANAWAY**

**Service Station**

Savannah Road      Lewes, Delaware

*FOR A LOVELY COIFFURE VISIT*

**MYRTLE'S BEAUTY SHOPPE**

405 W. Division Street  
Dover, Delaware

Telephone 2103

*Compliments of:*

**VIRGINIA'S HOBBY NOOK**

**CERAMICS**

Pottery and Jewelry Making  
Complete Firing and Instructions

Phone Dover 2026      Cheswold, Delaware

**THE DOVER GAS LIGHT CO.**

7 Loockerman St.  
Dover, Delaware

Phone Dover 3221

Complete line of Modern Ranges, Auto-  
matic Water Heaters, Refrigerators,  
and Gas Dyers

*To be economical—*

**USE GAS**

*Compliments of:*

**THE NATIONAL THEATRE**

8th and French Street  
Wilmington, Delaware

Dr. John Hopkins, *Prop.*



**B. F. GOODRICH**

109 Lookerman Street

Dover, Delaware

Phone 2381

**NELSON J. FORNEY**

Jeweler

Dover — — Delaware

**WALTER H. WARRINGTON**

"Men's Togs"

Dover

Get it at

**BRYAN AND HOPKINS**

Your Rexall Druggist

**ROSEDALE BEACH, INC.**

Millsboro, Delaware

One of the Most Popular Resorts in the East

Open the Year Round

**SAFE BATHING—BOATING—CRABBING**

**REASONABLE Rates — Tasty Foods**

**32 ROOM HOTEL**

**CABINS AND COTTAGES**

J. W. Vause, Prop.

Berwyn, Pa.

Phone Wayne 0695

F. R. Vause, Mgr.

Phone Millsboro 3287

Compliments of

**BUCHANAN SERVICE**

207-09 S. Governors Avenue

Dover, Delaware

Firestone

E. W. Buchanan, *Owner*

Phone Dover 5786

**DOUGLAS'S CAB SERVICE**

Dover, Delaware

Wm. Douglas, Prop.

Compliments of

**AMERICAN STORES**

Dover, Delaware

**COLLEGE INN**

Dover, Delaware

Mr. Clark—Prop.

Compliments of

**WILLIAM'S CAB**

Dover, Delaware

Compliments of

**MR. AND MRS. HARRY DAVIS**

Service (Gasoline) Station

and

R - E - S - T - A - U - R - A - N - T

Millsboro, Delaware



**F L O W E R S**

**For All Ocasions**

*WEDDINGS    BOUQUETS*

Funeral Work Our Specialty

*Compliments of:*

**LOUIS ROBINSON**

Laurel, Delaware

*Compliments of:*

**SEARS, ROEBUCK & CO.**

Dover, Delaware

*STOP AT THE*

**GOLDEN CIRCLE INN**

Phone Dover 3730

DuPont Highway—Route 13  
4 miles north of Dover  
7 miles south of Smyrna

Harley F. Taylor, *Prop.*

*Compliments of:*

**E M A N U E L ' S**

*THE FASHION STORE OF THE  
EASTERN SHORE*

Dover, Delaware

**Quality and Service**

MADE THE

**L. G. BALFOUR COMPANY**

The World's  
Largest jewelers of fine fraternity  
and class jewelry

**Delaware State College Rings**

1601 Chestnut St.      Philadelphia, Pa.

**M A A G ' S**

Dover      Tele: 5707      Delaware

**Complete Line of Sporting Goods**

**Everything in  
Photographic Equipment**

Eastman   Argus   Graflex   Cameras

*Compliments of:*

**M c C R O R Y ' S**

Dover, Delaware

*Compliments of:*

**CLARK M c D A N I E L S**

Dover, Delaware

*Compliments of:*

**T A R V I N ' S**

Dover, Delaware

*Compliments of:*

**C O S D E N   &   E V A N S**

Dover, Delaware



JOSEPH LEVI & CO.

Men's & Boys' Outfitters

— Since 1896 —

Dover, Delaware

M. H. FISHMAN CO., INC.

5c to \$1.00 Stores

Dover, Delaware

*Compliments of:*

DOVER MEAT MARKET

Dover, Delaware

"Where Public Service is a Pleasure"

F R E A R

Dover, Delaware

MILK

FUEL

CROSS ROADS

CLEMENTS & COURTRIGHT

Cleaning — Storage

Loockerman Street Dover, Delaware

TURNER'S PHARMACY

E. O. Turner, Ph.G.

611 Kaighn Ave. Camden, N. J.

Notary Public

CENTRAL LIQUOR STORE

120 Loockerman Street

Dover, Delaware

THE DOVER INDEX

Covers Kent County Like a Roof

— Finest in Fancy Printing —

Dover, Delaware

*Compliments of:*

DOWNES & CO.

Dover, Delaware



Compliments of  
CAPITOL and TEMPLE THEATRES  
Dover, Delaware

# BOOSTERS

Mrs. Mildred W. Henry

Dr. Charles Henry

Miss Agnes Norwood

Mrs. Swiggatt

Dr. Tribbett

Mr. Albert Scott

Miss Emma Williams

Mrs. Nona Scott

Miss Rebecca Cooper Dr. William Henry

Mrs. Clarence Norwood







