

'61

STATESMAN







# *The* STATESMAN

70th Anniversary Edition

PUBLISHED BY THE  
STUDENTS OF  
*Delaware State College*  
DOVER, DELAWARE  
1961





# Dedication

"Threescore and ten years ago dreams of a college for Negroes in Delaware became an incipient reality. As one looks at our college today and its graduates, he can see the growth and improvement of the physical plant and the unusual attainments of its graduates as they take their places in their respective communities.

"This 1961 edition of the *Statesman* is dedicated to all the fine people who have endeavored to give meaning and purpose to the ideals and dreams which have kept it alive these many years.

"As we stand upon the threshold of new frontiers in America, we realize there are many more aims to which the Delaware State College family must work in order to make completely realistic dreams of yester-years. Of these, understanding our fellowman and freedom for all are outstanding.

"This is the great task which lies before us."

*The Statesman*

DEL  
LD  
1961  
.D75  
1961  
C.4

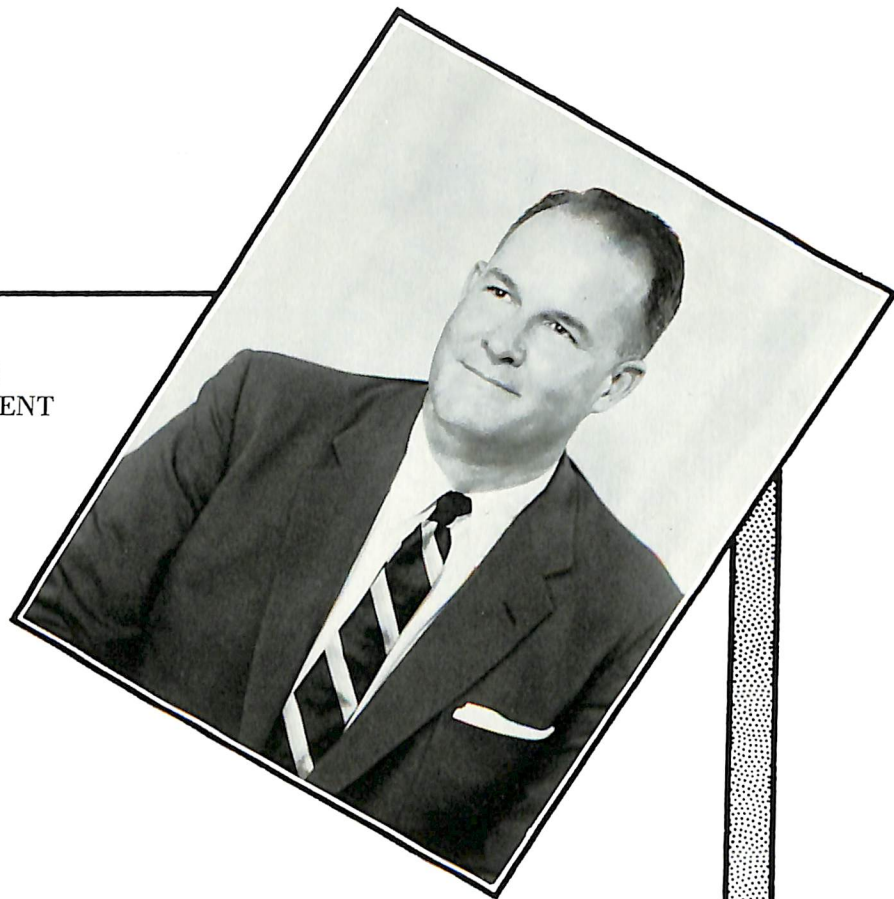
## CONTENTS

1	Title Page
2	Dedication
3	Contents
4	Governor's Message
5	President's Message
6	Faculty and Staff
9	Library Building
10	Freshmen
12	Sophomores
14	Miss Yearbook
15	Juniors
20	Seniors
40	Miss Homecoming and Activities
44	Organizations
50	Many Long Years Ago
52	Activities and Snapshots
60	Greeks
63	Buildings
65	Miss Delaware State College
66	Sports
77	Guests
78	Business Education Visits Industry
79	Miscellaneous
91	Advertising



STATE OF DELAWARE  
EXECUTIVE DEPARTMENT  
DOVER

February 14, 1961



TO THE CLASS OF '61 AT DELAWARE  
STATE COLLEGE:

As Governor of the State of Delaware, it is my pleasure to extend, on behalf of all our citizens, greetings and congratulations to the Class of '61 at Delaware State College.

This year Delaware State is observing its 70th anniversary as an institution of higher education, and I share with you appreciation of the great progress that has been made and the contributions of the many dedicated people who made such progress possible.

My very best wishes, along with those of your fellow-Delawareans, are with each and every one of you.

Sincerely,

Elbert N. Carvel  
Governor



To the Members of the Senior Class, the Advisors, and all who participated in this most worthy project, I extend sincere congratulations! In publishing the 1961 volume of THE STATESMAN you have done much to preserve the history, tradition, and rich cultural heritage of the college.

On behalf of the Board of Trustees and the entire College Family I accept this volume and shall direct that it be officially recorded and preserved among our library collections pertaining to the activities and pictorial history of your life at Delaware State College—1960-61.

It is hoped that this volume will serve to inspire future classes to continue in this traditional contribution to the life of the college.

Cordially yours,

Luna Isaac Mishoe  
President





## Faculty—Staff

HARRY ANDERSON  
A.B., M. Litt.  
English

CAROLYN R. ARNELL  
Secretary

CHARLIE ARNELL  
Actg. Business Mgr.



JAMES G. BARRINGER  
B.A., M.A., Ph.D.  
English

STEPAN BENDA  
Eng.D., Sc.D.  
Science

DONALD A. BLAKEY  
B.S., M.A.  
Physical Education



MARY B. BROWN  
R.N.  
Nurse

ANNIE W. EATON  
B.S., M.A.  
Home Economics

FREDERICK J. FRANKLIN  
B.S., Ed.M.  
Physical Education



LUCILLE G. FRANKLIN  
A.B., M.A.  
Physical Education

W. ANTHONY GAINES  
B.A., M.A., Ph.D.  
Research

MAYE H. GRANT  
A.B., M.A.  
Music

## Faculty—Staff

ELBERT HARRIS  
B.S., M.A., Ph.D.  
English

ALICE JACKSON  
B.S., M.S.L., B.S.L.S.  
Librarian

WILLIAM E. JOHNSTON, JR.  
B.S., M.A., Ed.D.  
Student Personnel



CARL KENNERLY  
B.S., M.Sc.  
Agriculture

HYMAN KURITZ  
B.S., M.A., Ph.D.  
History

MARY LANE  
B.S.  
Bookkeeper



THERESA O. MASON  
B.S.  
Counselor, Women Students

JOHN McCOLLOUGH  
B.S., M.S., Ed.D.  
Art

ROY D. MOORE  
B.S., M.S.  
Physical Education



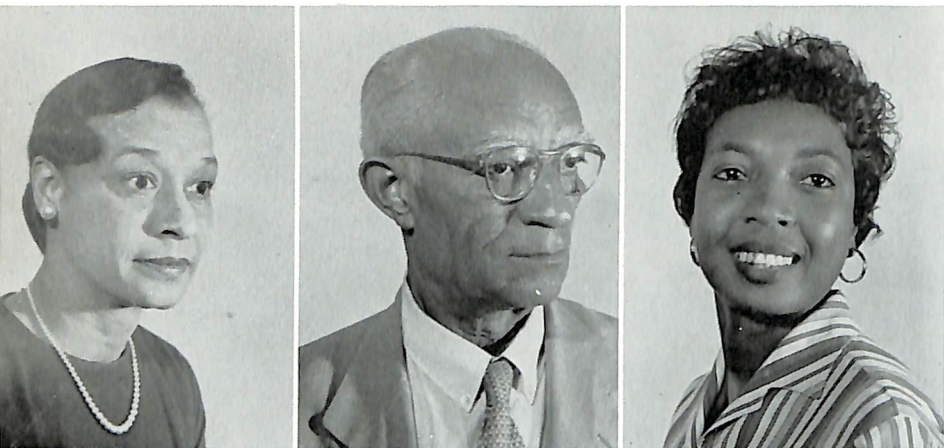
CHARLES SASS  
Ph.D.  
Mathematics

LOUISE N. SUTTON  
B.S., M.A.  
Mathematics

ERNEST TALBERT  
A.B., M.B.A.  
Economics







MICHAEL YATRON  
B.S., M.A., Ph.D.  
English

## Faculty—Staff

LAVERNE THOMASSON  
B.S., M.S.  
Sociology

MAURICE THOMASSON  
B.S., A.M., Ph.D.  
Sociology

MARGARET THORPE  
B.S., M.S.  
Home Economics

CORA E. WARREN  
A.B.  
Director, Tubman Hall

ULYSSES WASHINGTON  
B.S., Ed.M.  
Agriculture

JAMES WILLIAMS  
B.A., M.M.E.  
Music



*"May all who enter here to  
learn, go forth to serve . . ."*



Malcolm Arnell  
Marva Avent  
Gloria Benson  
Azalie Brice  
Bertha Bratton



Marilyn Jackson  
Christine Johnson  
Eva Jones  
Jasper Mial  
Laura Mosley

Joyce Burton  
Barbara Cannon  
Charles Carter  
Sandra Cephas  
Margaret Chandler



Ernestine Mumford  
Celestine Perry  
Ermadine Rickards  
Leonie Robinson  
Juanita Singleton

Patricia Dicks  
Willis Dickerson  
Carey Drayton  
Edgenell Edmonds  
Paul Ferrell



Idell Smith  
Irene H. Smith  
William Still  
Lloyd Summers  
Sandra Swiggett

## *Freshmen*



Catherine Gaines  
Regina Gaines  
Esther Garrison  
Elaine Gonney  
Zella Griffin



Geraldine Hall  
Gwendolyn Harley  
Patricia Harmon  
Waymon Harmon  
Willis Harmon



Winfred Harmon  
Dorothy Harris  
Clarence Henry  
Mozelle Hopkins  
Bruce Jackson

## *Freshmen*



Marie Thomas  
Wynell Tunnell  
Doris Turner  
Effie Waters  
Bernice West



Charles White  
Hyacinth White  
Allen Wilson





Ulysses Baxter  
Estella Benton



Joanne Blocksom  
Lewis Brashears



Willie Lee Cannon  
Helena Coles  
Sallie Hall



Major Harriston  
Doris Hyland  
Courtney Johnson



James Johnson  
Gwendolyn Joines  
Jack McSears



Evelyn Nixon  
Charlotte Morris  
Doris Newby

# SOPHOMORES

# SOPHOMORES

Pauline Palmer  
William Pearson



Herb Peters  
Dorothy Price



Jesse Raphael  
Irene Smith  
Lolita Smith



Frances Spencer  
Gwendolyn Summers  
Catherine Swiggett



Peggy Thompson  
Sara Turner  
Geneva Uaughan



Leila Woolford  
Earl White



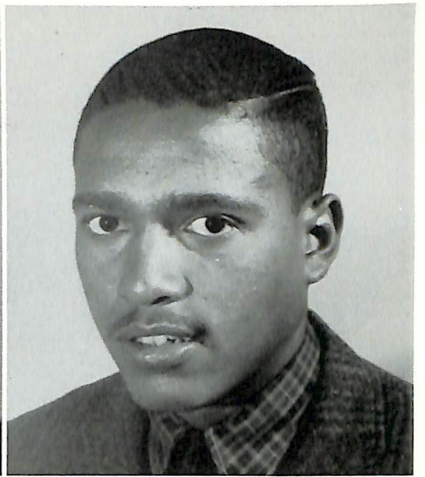




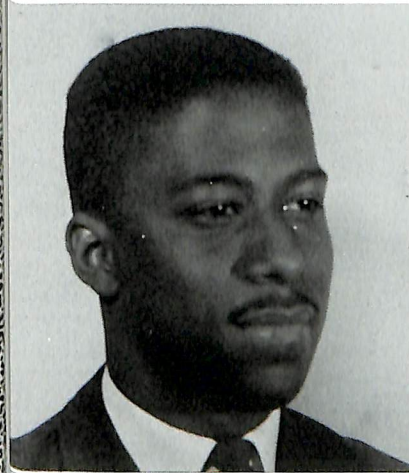
*Miss Yearbook*  
BEATRICE  
HARGRAVES  
'61

*J  
u  
n  
i  
o  
r  
s*

MARSHALL ARNELL  
History  
THOMAS ARRINGTON  
Physical Education



ERNESTINE BIVINS  
Sociology  
DELEMA BURRIS  
Elementary Education

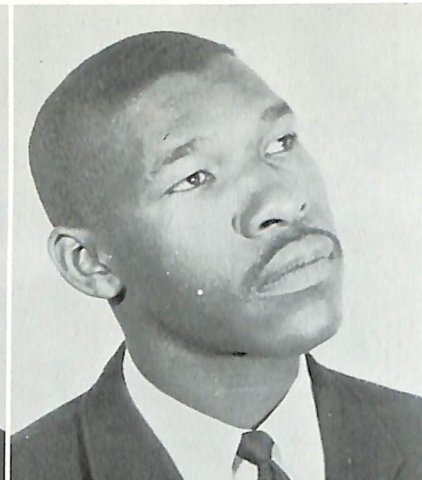
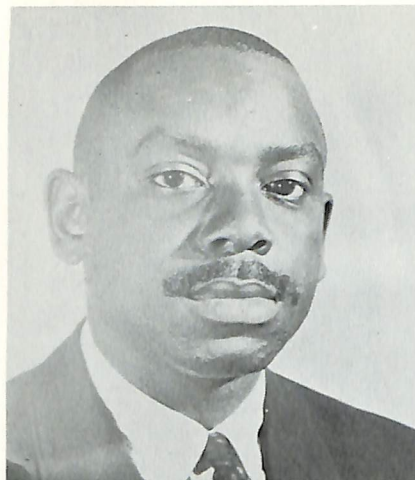


JOHN CLAYTON  
Physical Education  
JUANITA COVERDALE  
Secretarial Science



JUNIOR CLASS OFFICERS  
Lloyd Dixon  
Frances Jackson  
Milton Hardy  
Joyce George  
Philip Sadler





DONALD DAWSON  
Business Administration  
LLOYD DIXON  
Chemistry

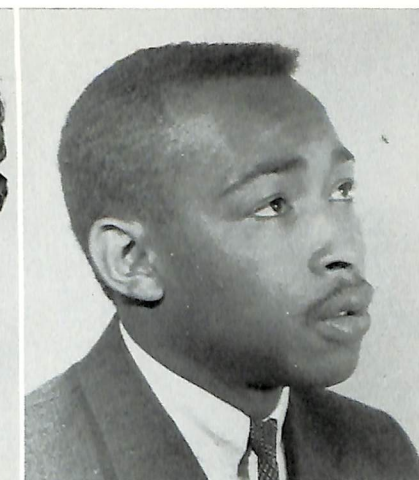


SELENA GODFREY  
Elementary Education  
WILLIAM GRANVILLE  
Mathematics

*J  
u  
n  
i  
o  
r  
s*

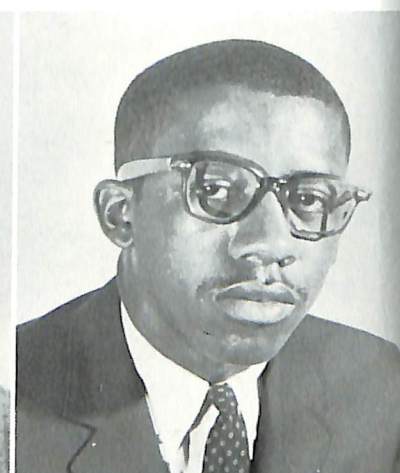
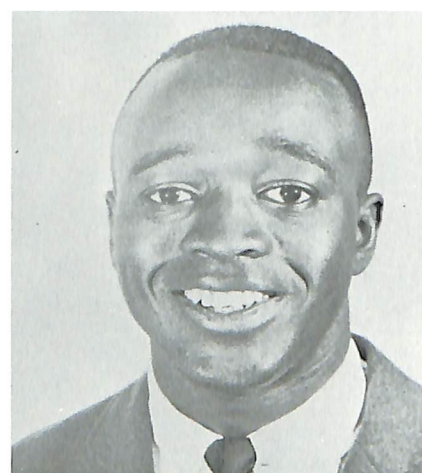
*J  
u  
n  
i  
o  
r  
s*

CHRISTINE HOAGLAND  
Music Education  
ALFRED HOLMES  
Business Administration

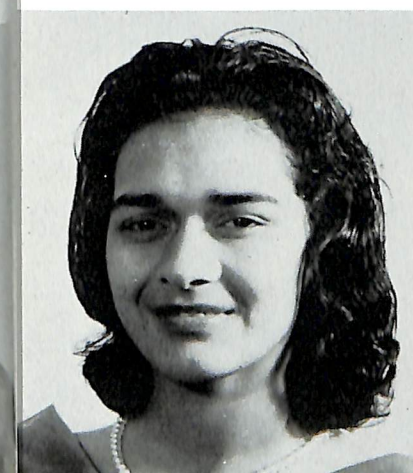


ESSIE HUNT  
Business Education  
FRANCES JACKSON  
Elementary Education

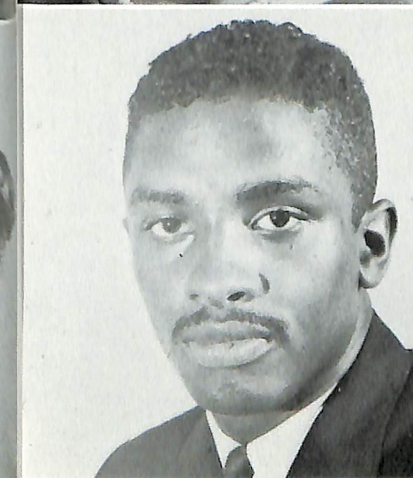
MILTON HARDY  
Biology  
LAWRENCE HAYES  
Business Education



PHYLIS HAYES  
Elementary Education  
SARAH HICKMAN  
Elementary Education



JOAN JACKSON  
Business Education  
PATRICIA KEMP  
Elementary Education

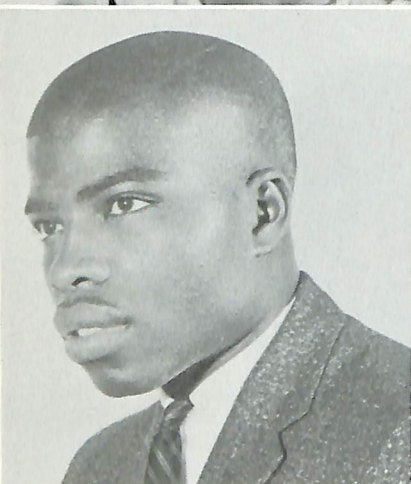


ALONZO KITTRELS  
Sociology  
JANICE KNIGHT  
Music Education





ROSETTA JENKINS  
Elementary Education  
HEWITT JOYNER  
Physical Education

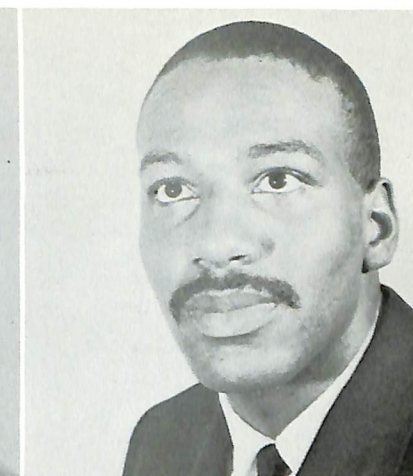


FELTON LINGO, SR.  
Physical Education  
BARBARA MANGUM  
Elementary Education

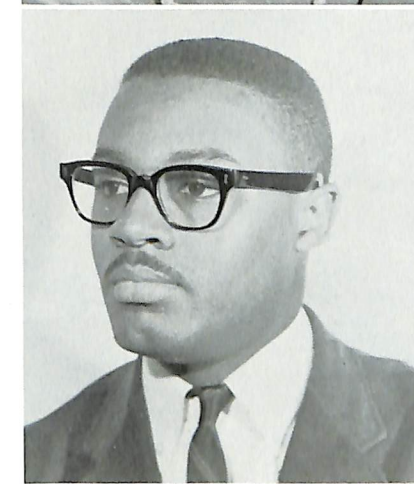
*J  
u  
n  
i  
o  
r  
s*

*J  
u  
n  
i  
o  
r  
s*

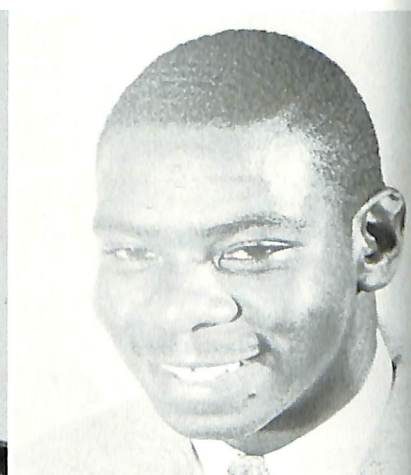
LOWAN C. PITTS  
Sociology  
PHILLIP SADLER  
Business Administration



JAMES SCALES  
Biology  
PATRICIA SNEAD  
Elementary Education



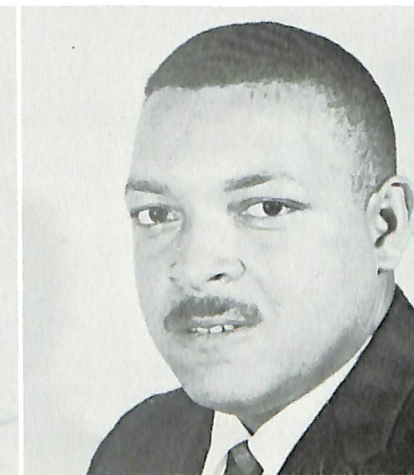
SHIRLEY McCOY  
Sociology  
ROBERT NIXON  
Sociology



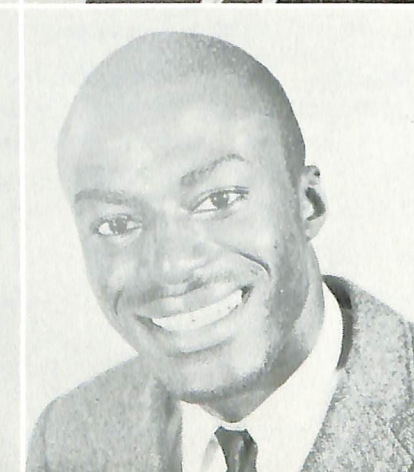
EULA OLIVER  
Elementary Education  
WALTER PENNY  
Physical Education



PEGGY SWYGERT  
Sociology  
MORTIMER THOMPSON  
Biology



EDITH WILLOUGHBY  
Elementary Education  
BOBBY WYCHE  
Biology





# SENIORS



GLORIA W. ARNELL

*Business Education*

Business Club; Newspaper Staff; Newman Club.



ROGER PAUL ARNELL

*Sociology*

Newman Club.

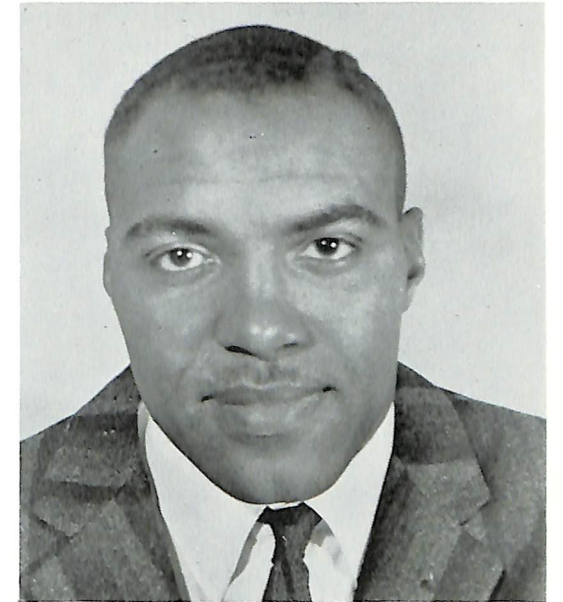


ROSCOE BAKER  
"The Bean"

*Health and Physical Education*

Basketball Team; Baseball Team; Track Team; Swimming Team; Football Team; Pan-Hellenic Council; Health and Physical Education Club, Treasurer; Omega Psi Phi Fraternity.

# SENIORS



JOHN BARBER  
"Moe"

*Business Education*

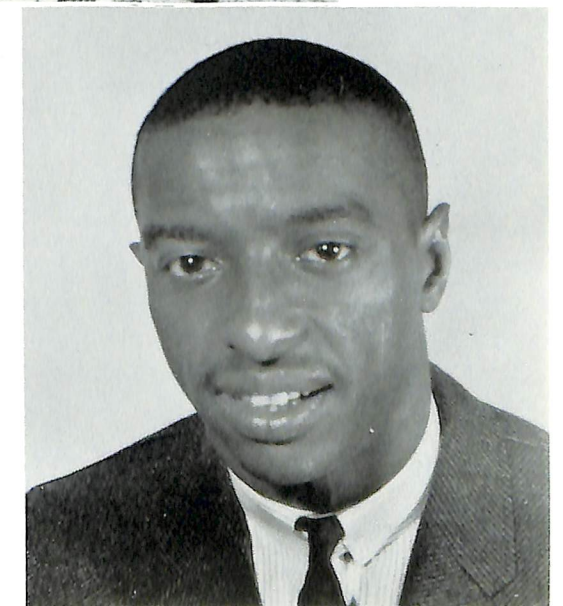
Basketball Team; Track Team.



GEORGE HENRY BEACHUM  
"Lord Tordy"

*Health and Physical Education*

National Education Association; Varsity Club; Men's Council; Football Team; Kappa Alpha Psi Fraternity.



JOHN BENSON  
"Ich"

*Biology*

National Education Association; Biology Club; Fine Arts Club; Men's Council; Basketball Team.



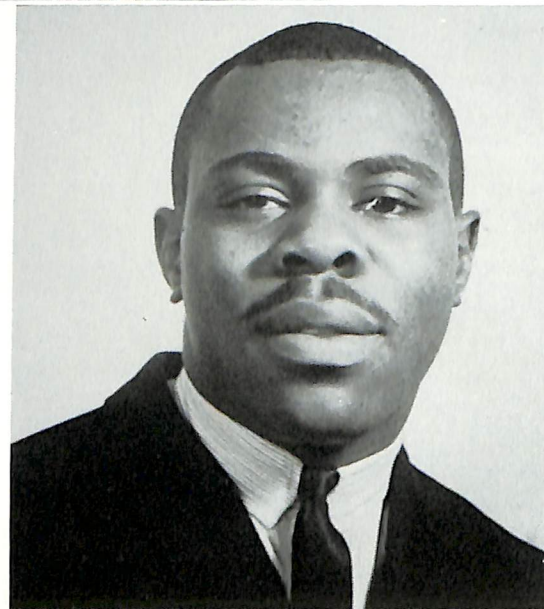
# SENIORS



DORIS ELAINE BLOCKSOM  
"Deb"

*Elementary Education*

N.E.A.; Dramatics Club; S.C.A.; Delorette Club; Majorette.



HALVIN THEAPOLIS BLOCKSOM  
"Block"

*History*

N.E.A.; Choir; Band; Soc. Sci.; Dramatics Club; International Club.

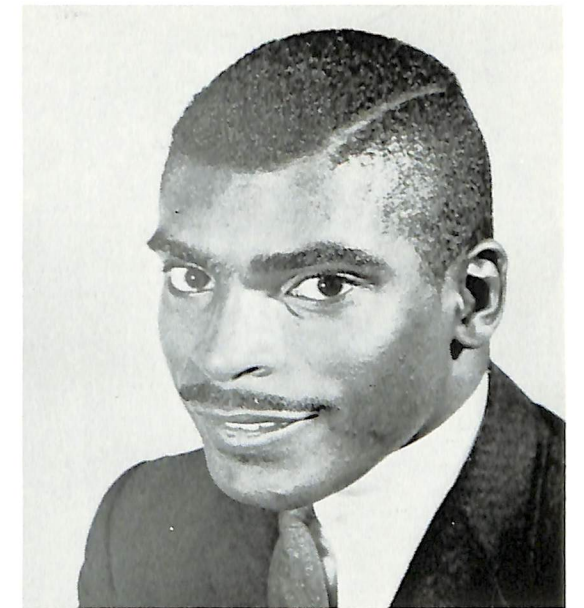


OLIVIA BERNICE BLACKWELL  
"Leb"

*Health and Physical Education*

Cheerleader; S.C.A.; N.E.A.; Physical Education Club; Delta Sigma Theta Sorority.

# SENIORS



GRAFTON M. BRITTINGHAM  
"Britt"

*Elementary Education*

N.E.A.; Varsity "D" Club; Football Team; Baseball Team; Swimming Team; Intramural Basketball.



GILBERT H. COLEMAN  
"Programme"

*Business Administration*

Veterans Club; Track Team; Business Club; Fine Arts Club; Swimming Team; Intramural Basketball Team.



ROSE ELLEN COVERDALE

*Biology*

S.C.A.; N.E.A.; Biology Club; Yearbook Staff; Hornet Staff, Co-Editor; Delta Sigma Theta Sorority.



# SENIORS



BEVERLY ANNE DAVIS  
"Bev"

*Elementary Education*

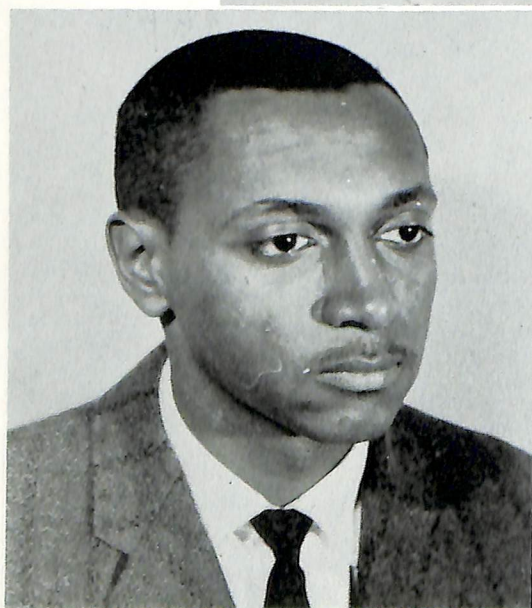
Dramatics Club; N.E.A.; Women's Senate, President; International Club; Yearbook Staff; Dramatics Guild; Delorette Club; Alpha Kappa Alpha Sorority.



SHELIA K. DAVIS

*Business Education*

Business Club; Sec'y., Senior Class.



CHARLES EVERETT DUTTON  
"Charlie"

*Mathematics*

S.G.A.; Math Club; N.E.A.; Yearbook Staff.

# SENIORS



REBECAH EVANS  
"Reba"

*Business Education*

Business Club; Dance Group; Hornet Staff; Yearbook Staff, Chief Typist; Student Council.



PRISCILLA LAYNE FONTAINE  
"Cilla"

*Health and Physical Education*

S.G.A.; Basketball Team; N.E.A.; Dramatics Club; International Club; Secretary, P.Ed. Club; Captain, Cheering Club; Hornet Staff; Attendant, Miss Delaware State, 1960-61; "Miss Scroller," 1958-59; "Miss Pyramid," 1959-60; Student Council Representative.

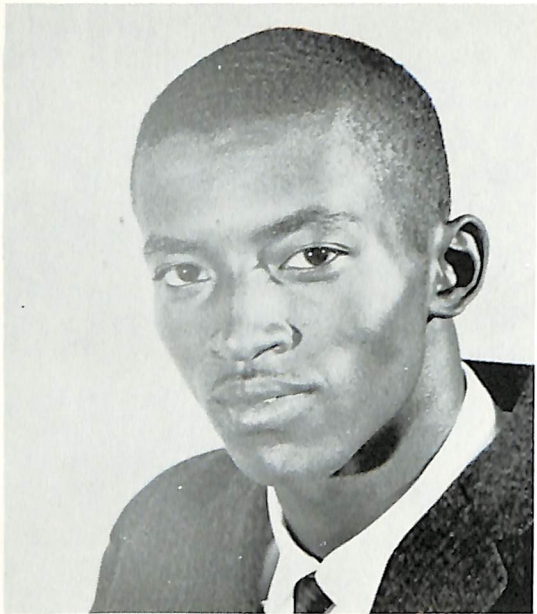


MARION ELIZABETH GIBBS  
"Meg"

*Elementary Education*

Who's Who in American Universities and Colleges; S.G.A.; N.E.A.; Women's Senate; Hornet Staff; Yearbook Staff; Production Manager, Dramatics Club.





# SENIORS

GEORGE NATHANIEL GODFREY  
"Toadie"

*Mathematics*

Math Club; N.E.A.; Basketball Team; Track Team; Secretary and Treasurer of Math Club.



VICTOR T. GREEN  
"Vic"

*Sociology*

N.E.A.; Yearbook Staff.

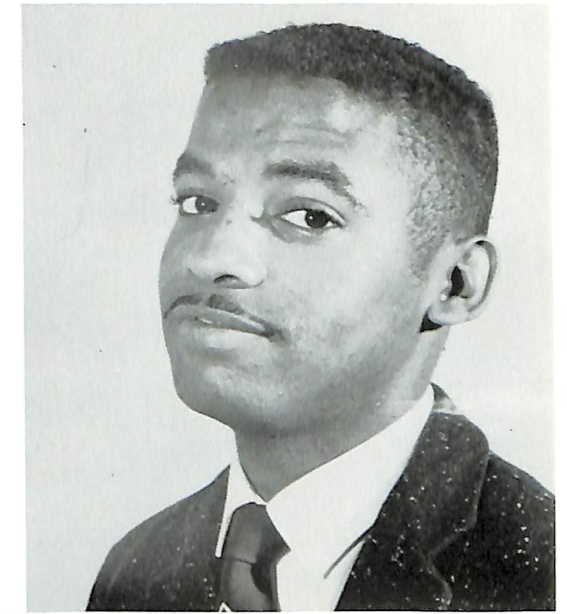


CLEO JUANITA HARMON  
"Clee"

*Sociology*

Secretary of S.C.A.; Keeper of Deeds Delta Sigma Theta Sorority, Inc.; Vice President Delta Sigma Theta; Program Chairman S.S.C.; Representative in Women's Senate; Junior Editor Yearbook; Senior Editor Yearbook.

# SENIORS



CLIFFORD LECOUNT HARMON

*Mathematics*

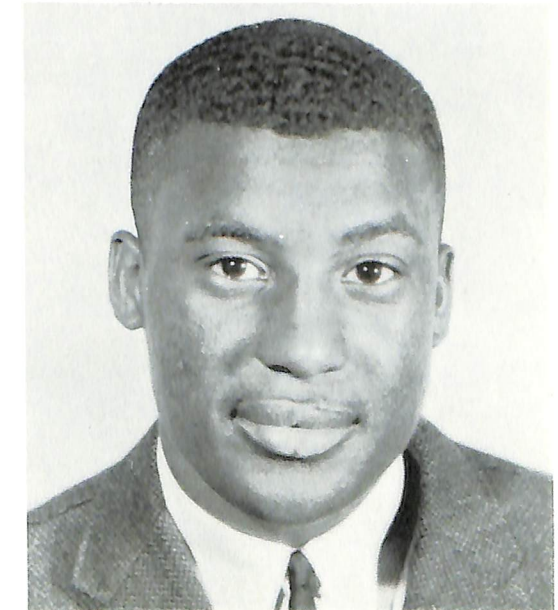
Vice-President, Math Club; Pan-Hellenic Council; S.C.A.; Basileus, Omega Psi Phi Fraternity.



ETHEL LETITIA HIGGINS  
"Reds"

*Elementary Education*

N.E.A.



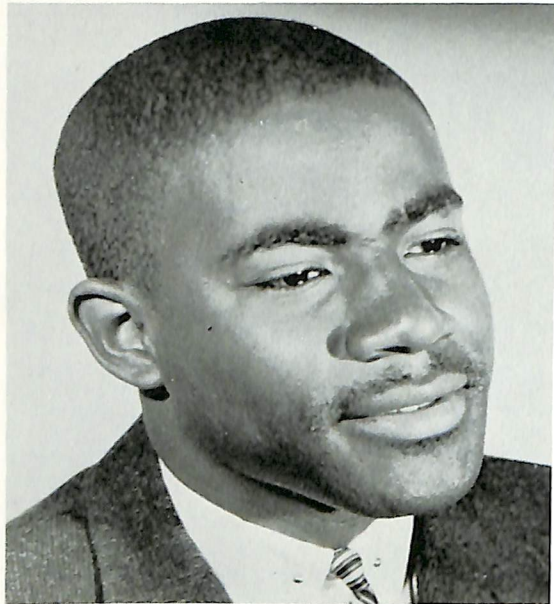
CHARLES WILLIAM HARRIS  
"Coop"

*History*

N.E.A.; Men's Council; Soc. Sci. Club; Fine Arts Club; Co-Captain, Student Coach, Track Team.



# SENIORS



CHARLES MELVIN HARRIS  
"Charris"

*Mathematics*

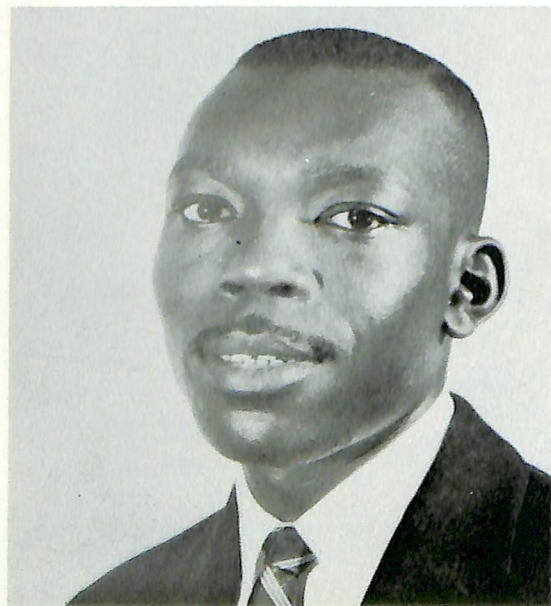
Vice President, Choir; Band; President, Math Club; Manager of Canteen; Omega Psi Phi Fraternity.



MARIAN OLIVIA HEATH

*Sociology-Psychology*

Choir; S.S.C.; Yearbook Committee; S.C.A. Dean of Pledgees, Alpha Kappa Alpha Sorority; Secretary-Treasurer, S.S.C.



WALLACE BERNARD HOMIER  
"Wally"

*Elementary Education*

N.E.A.; Veterans Club; S.C.A.; Men's Council.

# SENIORS



SHIRLEY HORTON  
"Shirl"

*Business Education*

Secretary, S.G.A.; N.E.A.; Business Club; Typist, Yearbook Staff; Delta Sigma Theta Sorority.



LEONZA V. INGRAM  
"Brother"

*Health and Physical Education*

Intramural Committee; N.E.A.; Physical Education Club; Players Guild; Football Team.



GERALDINE ANNE JOHNSON  
"Gerrye"

*Sociology*

Choir; Sec., Pan-Hellenic Council; Soc. Sci. Club; Sec., S.G.A.; Hornet Staff; Sec., Yearbook Editor; Women's Senate; Delorette Club; Chmn., Freshmen Counselors; Program Chrmn., Junior Class; Pres., Delta Sigma Theta Sorority; *Who's Who in American Univ. and Colleges.*





# SENIORS

WILHELMINA L. JOHNSON  
"Billie"

*Business Education*

N.E.A.; Delorette Club; S.C.A.; Business Club; Veteran's Sweetheart 1959-60; Treasurer, Women's Senate.



EUGENE JONES, JR.  
"Jonesy"

*Biology*

Men's Council; N.E.A.; Biology Club; Vice President, Varsity "D" Club; Omega Phi Fraternity; Football; Baseball.



ALDRICH MORGAN LITTLE, JR.  
"Chick"

*Agriculture Education*

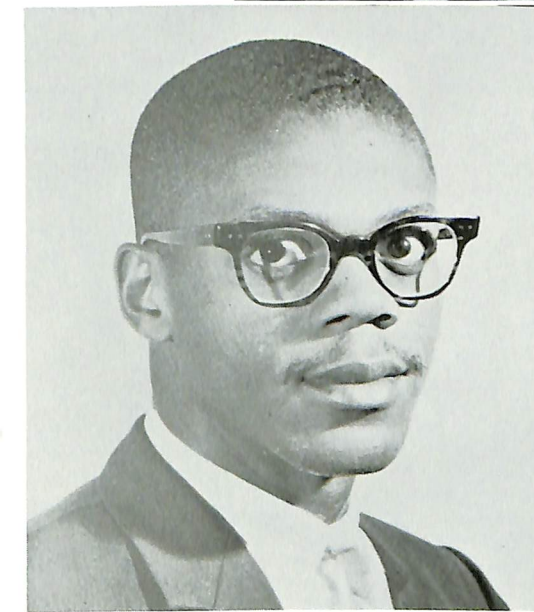
President, Aggie Club; Men's Council; President Varsity "D" Club; Kappa Alpha Psi Fraternity.

# SENIORS



KENNETH WESLEY LIVINGSTON  
"Ken"

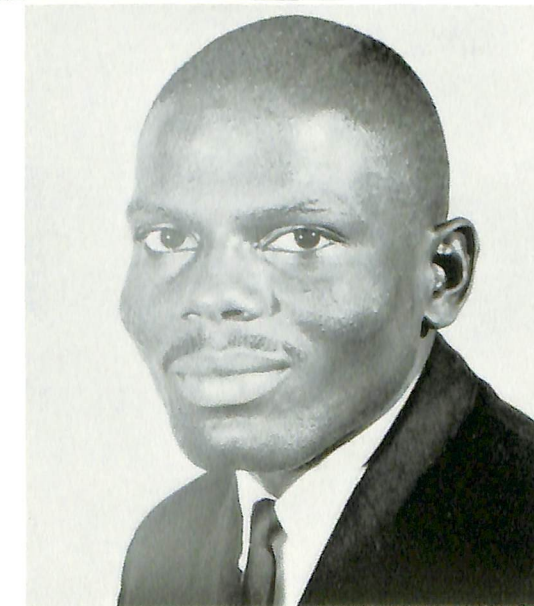
S.G.A.; International Club; Choir; Delaware Players Guild; President, S.C.A.; Vice-President, Student Council; Y.M.C.A. Exchange Student to Soviet Union.



ANDREW J. LUCAS

*Health and Physical Education*

Health and Physical Education Club; Veterans Club.



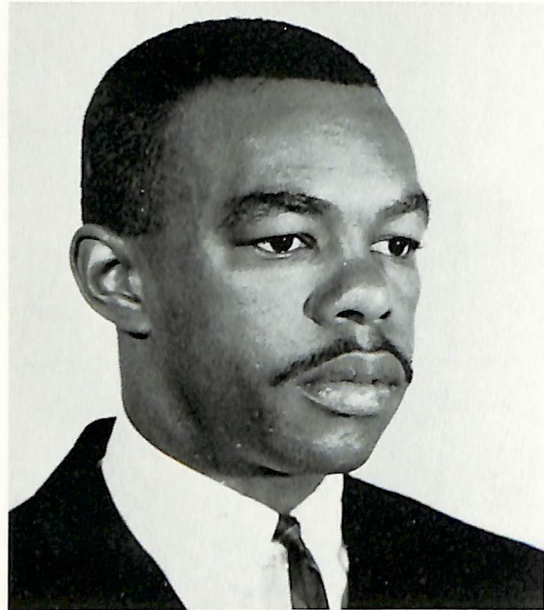
CHARLES MINOR  
"Chuck"

*Sociology*

Choir; Student Council; Intramural Basketball; President, Pan-Hellenic Council; President, Alpha Phi Alpha Fraternity.



# SENIORS



HERMAN T. MOODY, JR.  
"Dulong"

*Elementary Education*

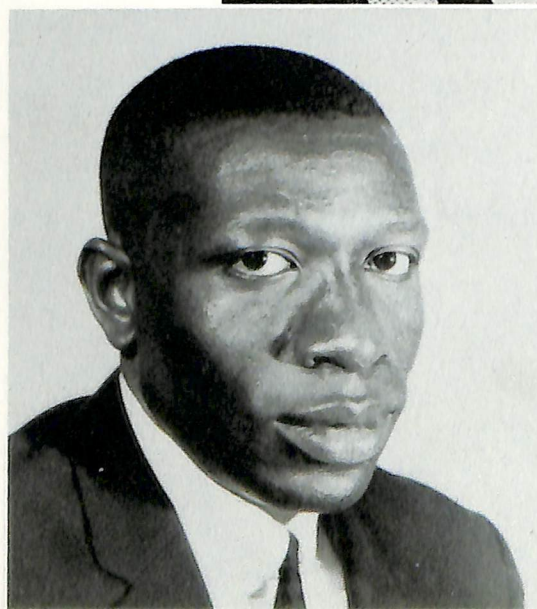
Member of Varsity Track Team, Cross-country Team; Men's Council; N.E.A.; and S.C.A.



WALTER NAPIER  
"Nape"

*Chemistry*

Member of American Chemical Society; Intramural Basketball Team; Men's Council.

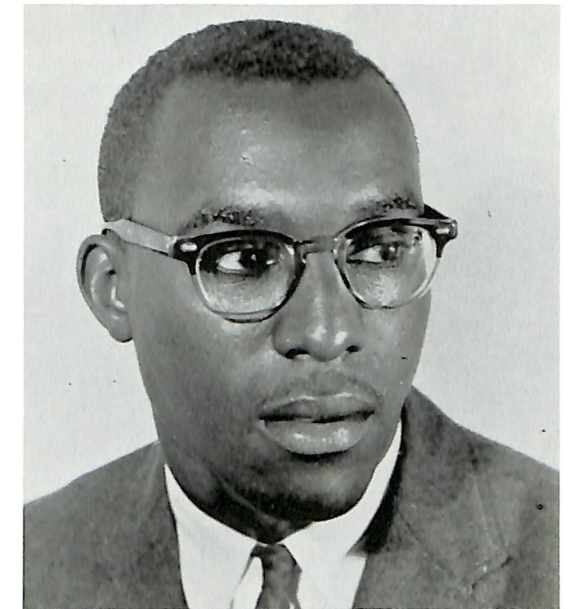


CLEO PEARSON  
"Clee"

*Business Education*

Member of Business Club; S.C.A.; Men's Council; Yearbook Business Manager; Veteran's Club President.

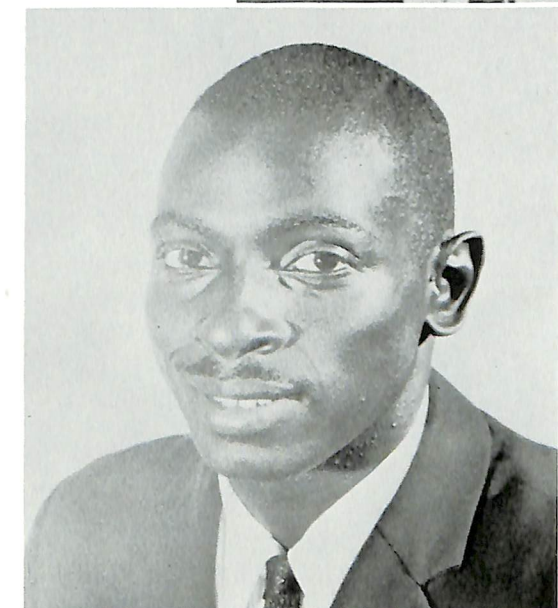
# SENIORS



JEROME H. PINKETT  
"Jerry"

*Business Education*

Yearbook Staff; N.E.A.; Varsity "D" Club, Student Council; Intramural Basketball; Varsity Football and Baseball; Kappa Alpha Psi Fraternity.



WILLIAM ROOSEVELT PINKNEY  
"Bill"

*Health and Physical Education*

Varsity "D" Club; Football and Track Teams; Intramural Basketball Team; Spring Manager, Intramural Committee, Health and Physical Education Club.



JAMES LEROY PLEASANT, JR.  
"Jass"

*Health and Physical Education*

Men's Council Human Relations Club; Player's Guild; S.C.A.; N.E.A.; Winter Manager, Intramural Committee; Co-Editor, *The Hornet*; Yearbook staff.



# SENIORS



GERALDINE ELIZABETH RYDER  
"Gerri"

*Business Education*

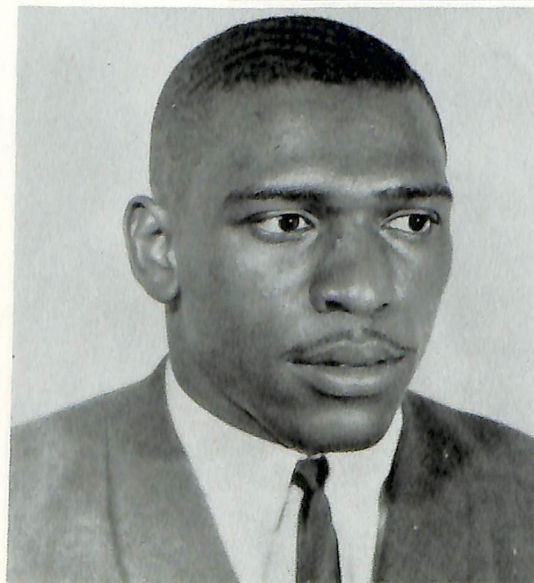
Business Club Secretary; "Miss Junior."



DANIEL J. SANDERS  
"Danny"

*Business Administration*

Member of Business Club; Pan Hellenic Council; Intramural Basketball; team.



RICHARD SAUNDERS  
"Dickie"

*Business Administration*

Member of Business Club; Intramural Basketball, Tennis, Swimming, Track; Manager-Baseball Team; Football Team; Varsity "D" Club; Vice-Polemarch-Kappa Alpha Psi Fraternity; Vice-President of Pan-Hellenic Council and Vice-President, Senior Class.

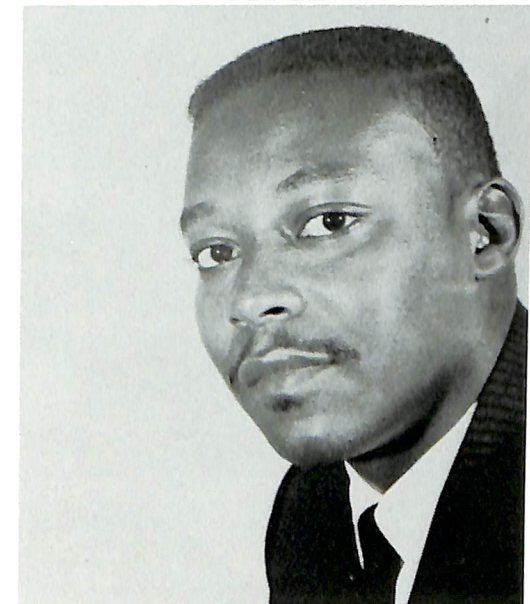
# SENIORS



ERNESTINE SCOTT (GRANT)  
"Tine"

*Biology*

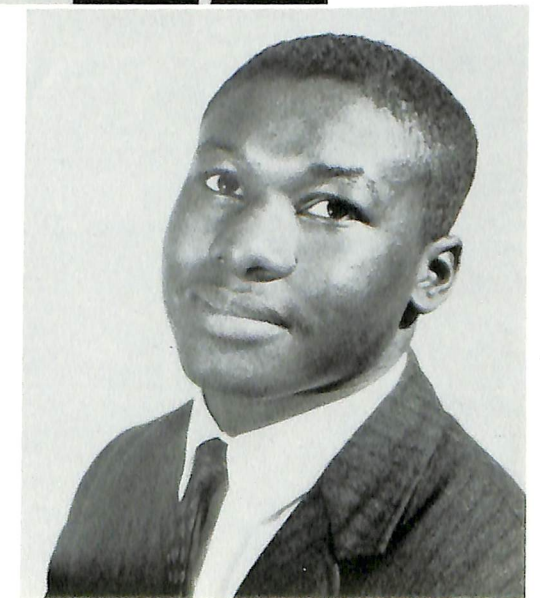
S.C.A.; Choir; N.E.A.; Yearbook staff; Delorette Club; Biology Club; Member of Regional Council-Y.W.C.A.



JAMES O. STARLING  
"Jim"

*Agriculture*

Agriculture Club; Intramural Basketball; Baseball Team.



ERNEST STEWARD  
"Shorty"

*Music Education*

Dramatics Club; N.E.A.; Choir; Marching and Concert Bands; Cheerleaders; Pan-Hellenic Council; Alpha Phi Alpha Fraternity; Gymnastics Instructor; President, S.G.A.; *Who's Who in American Colleges and Universities.*



# SENIORS



JANE VIRGINIA WATERS  
"Ginger"

*Elementary Education*

Member of N.E.A.; Delorette Club; Zeta Phi Beta Sorority; International Club; Associate Editor, *The Hornet*; Yearbook Staff.



MARGOT JANE WATERS  
"Lefty"

*Elementary Education*

Member of S.C.A.; Social Science Club; Delorette Club; Choir.

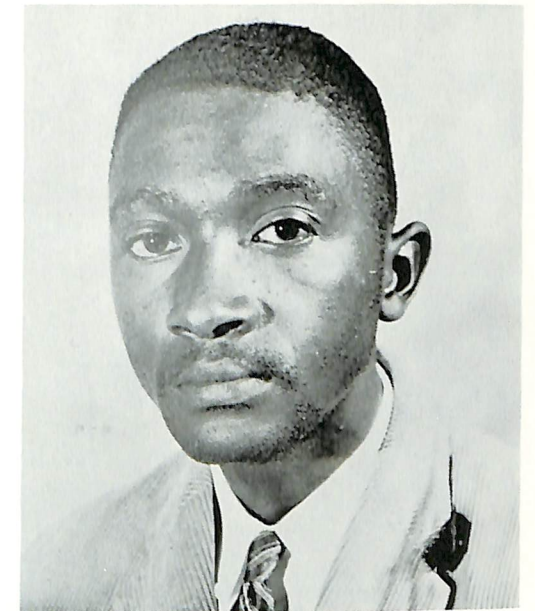


HOWARD LEROY WEST  
"Trooper"

*Elementary Education*

Member of N.E.A.; Player's Guild; Varsity "D" Club; Football Team; Veteran's Club; President, Men's Council; Senior Class Treasurer; Omega Psi Phi Fraternity.

# SENIORS



HENRY T. WHITE  
"Dimp"

*Music Education*

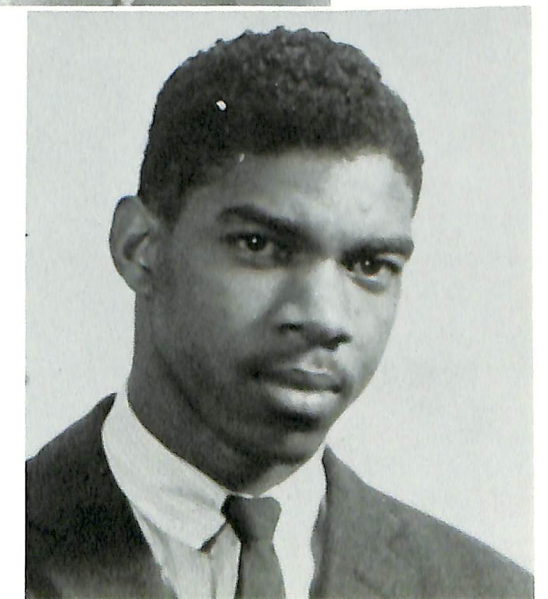
Veteran's Club; N.E.A.; Choir; M.E.N.C.; Dramatics Club; Dance Band; Assistant Band Conductor.



GENEVA WHITFIELD

*Elementary Education*

Member of Delta Sigma Theta Sorority; N.E.A.



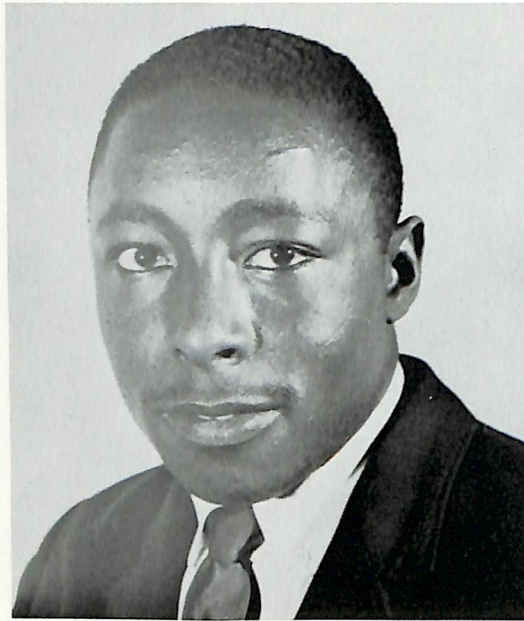
HERMAN WALLACE  
"Sweetness"

*Health and Physical Education*

Health and Physical Education Club; Intramural Basketball; Football.



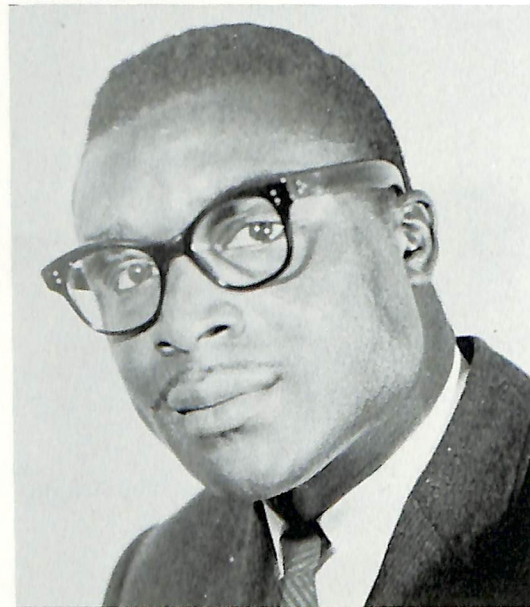
# SENIORS



HARRISON WILDER, JR.  
"Harry"

*Mathematics*

Math Club; Intramural Basketball, Track, Volleyball, Tennis; Football Team; A.C.S.



FRANKLIN EDWARD WILLIAMS  
"Frank"

*Chemistry*

Vice Chairman, Student Affiliate, A.C.S.; Kappa Alpha Psi Fraternity.

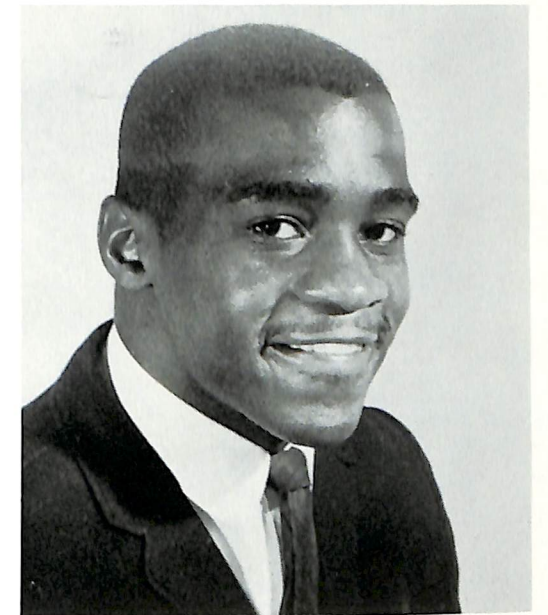


ROBERT E. WILLIAMS  
"Bobby"

*Health and Physical Education*

Intramural Basketball Committee; Captain, Swimming Team; Football, Track Teams.

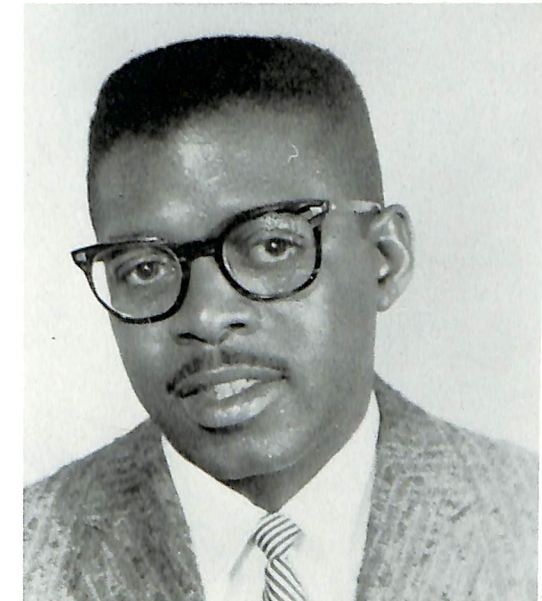
# SENIORS



CAL DEAN WILSON  
"Cal"

*Business Education*

Member of Varsity "D" Club; Choir; Business Club; Secretary, Men's Council; Yearbook staff; Kappa Alpha Psi Fraternity; N.E.A.; Treasurer, Men's Council; Captain, Football Team; Co-Captain, Baseball Team.



ALLEN ADAIR WINFIELD, JR.  
"Senator"

*Psychology-Sociology*

Vice-President, Freshman Class Program Chairman, Men's Council; Student Representative, College Recruiting; President, Veteran's Club; P.A. Announcer, Athletic and College Events; S.G.A.; *Man of the Year*; Health Committee, Chairman; Dean Scholar; Player-Student Coach, Baseball Team; Managing Editor, Yearbook staff; Drummer in Marching, Dance, Concert Bands; Polemarch, Kappa Alpha Psi Fraternity.







*Miss Homecoming*  
Agnew Lockett

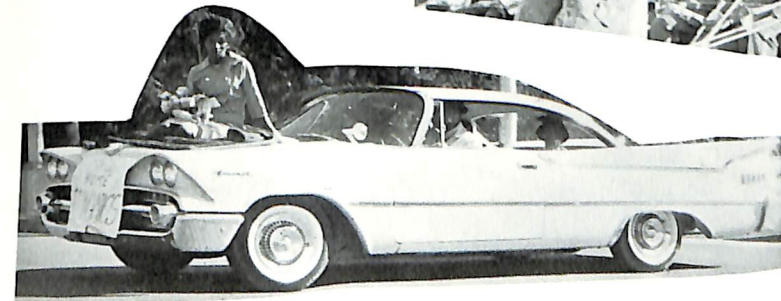
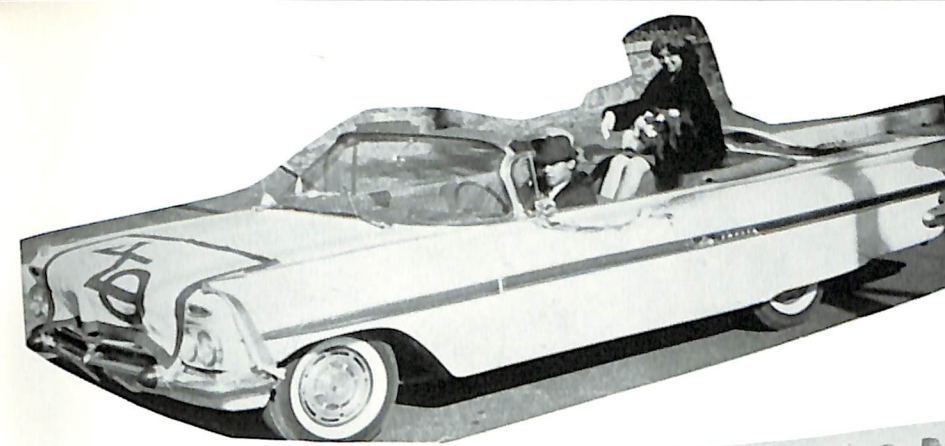
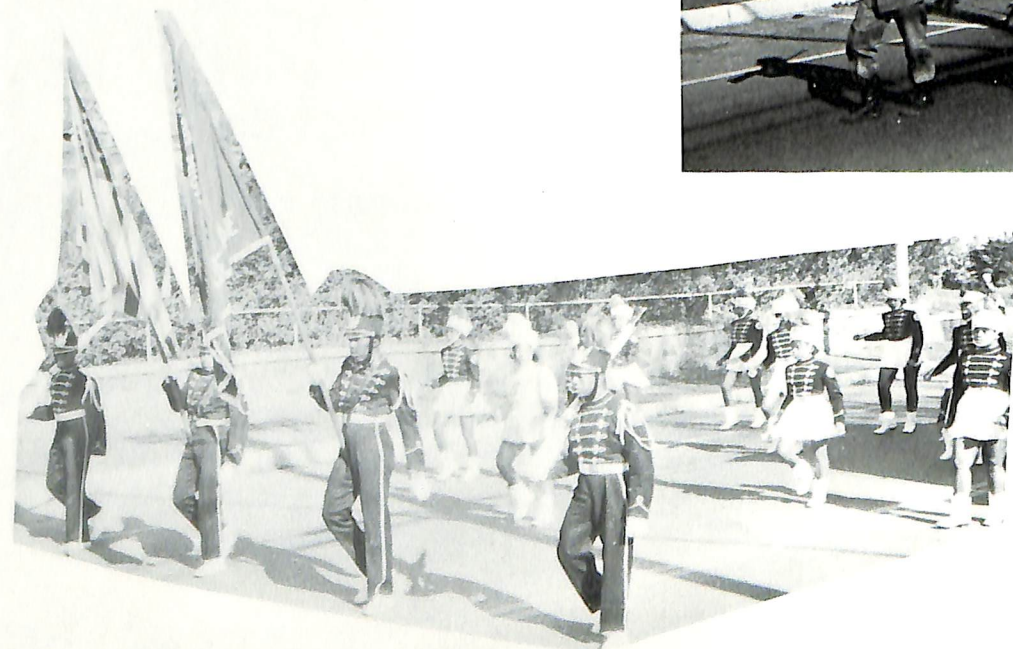
# Homecoming Court



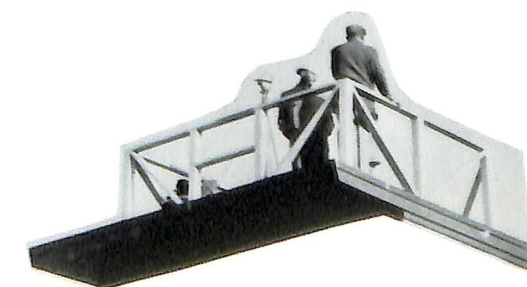
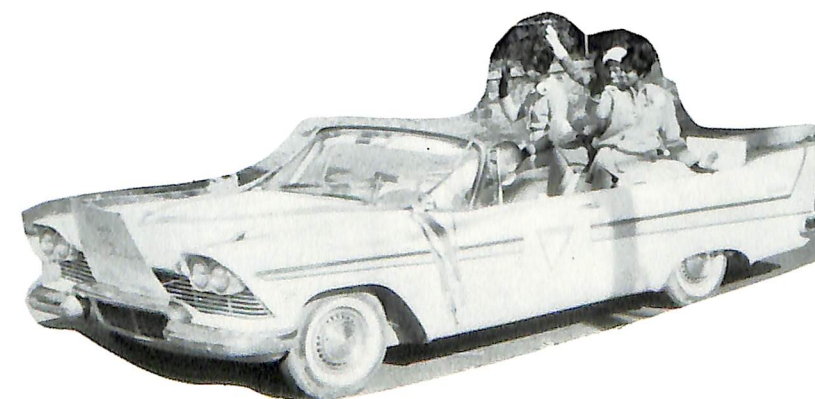
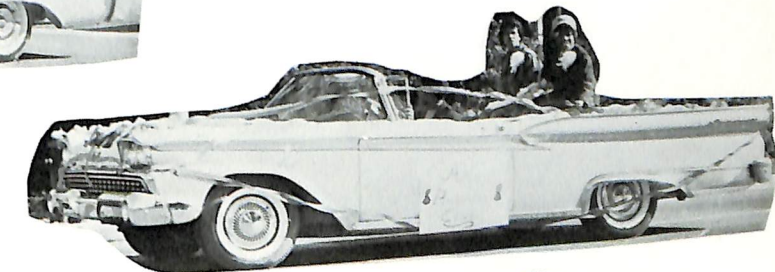
- 1—President congratulates "Miss Homecoming Queen"
- 2—Queen's attendants, Priscilla Fontaine, Joan Jackson, and little Karla Walker.
- 3—The Queen's Court.
- 4—"Miss Alumni" and her attendants.



# **HOMECOMING ACTIVITIES**

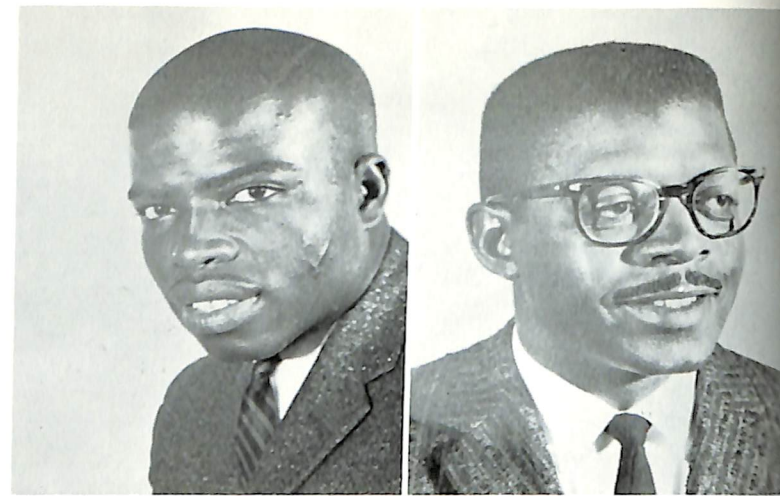


# **HOMECOMING ACTIVITIES**





FELTON LINGO, SR.  
Editor-in-Chief  
ALLEN A. WINFIELD, JR.  
Managing Editor



#### STAFF MEMBERS

*Secretarial Staff* ..... Joyce Burton, Geraldine Johnson  
*Associate Business Manager* ..... Eva Jones  
*Art Editors* ..... Charles Minor, Leonzo Ingram  
*Photographers* ..... Charles Dutton, Victor Green  
    Ernest Steward, Charles White  
*Residence Editor* ..... Patricia Snead  
*Sports Editor* ..... Cal Wilson  
*Subscription Editor* ..... Virginia Waters  
*General Aids*—George Bowles, Beverly Davis, Douglas Dupee, Marion Gibbs, Clifford Harmon, Gwendolyn Joines, Marita Lingo, Barbara Mangum, Pauline Palmer, Jerome Pinkett, Ernestine Scott (Grant), David Wilkens. *Typists*: Rebecca Evans, Joanne Blocksom, Beatrice Hargraves, Ethel Ricketts, Irene Smith.

CLEO PEARSON  
Business Mgr.

CLEO HARMON  
Senior Editor

DR. W. ANTHONY GAINES  
Advisor



*The Statesman Staff*



#### SENIOR OFFICERS

Howard West, Shelia Davis, Richard Saunders, and Jerome Pinkett.

## ORGANIZATIONS



#### JUNIOR OFFICERS

Lloyd Dixon, Frances Jackson, Milton Hardy, Joyce George, and Philip Sadler.



Sophomore Class Officers



Student Government Officers



# ORGANIZATIONS

Freshman Class Officers



Who's Who Among Students In American Universities and Colleges.



Men's Council



ORGANIZATIONS



Student Christian  
Association



College Choir



Business Club



Veteran's Club



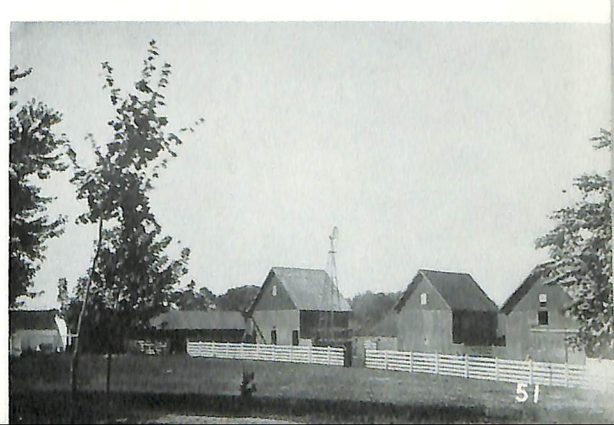
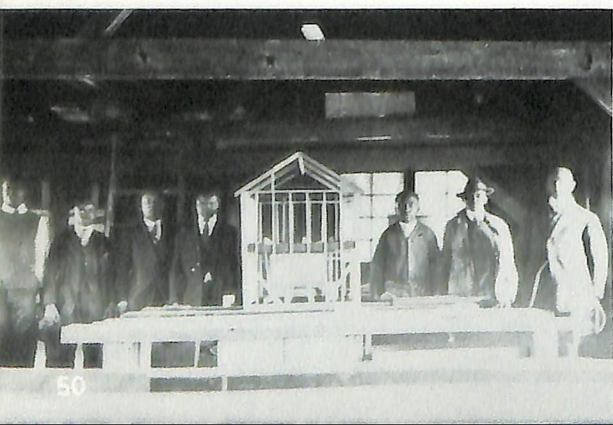
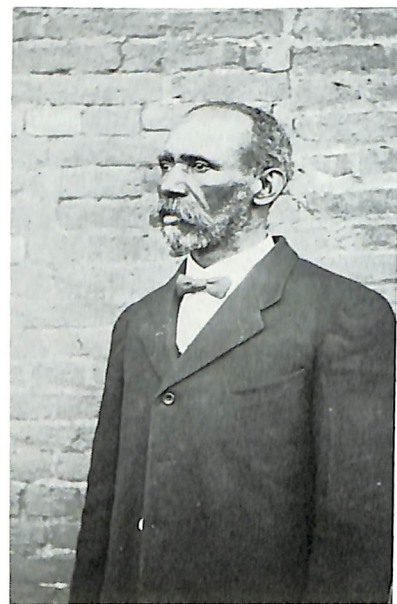
Hornet Staff



Varsity "D" Club



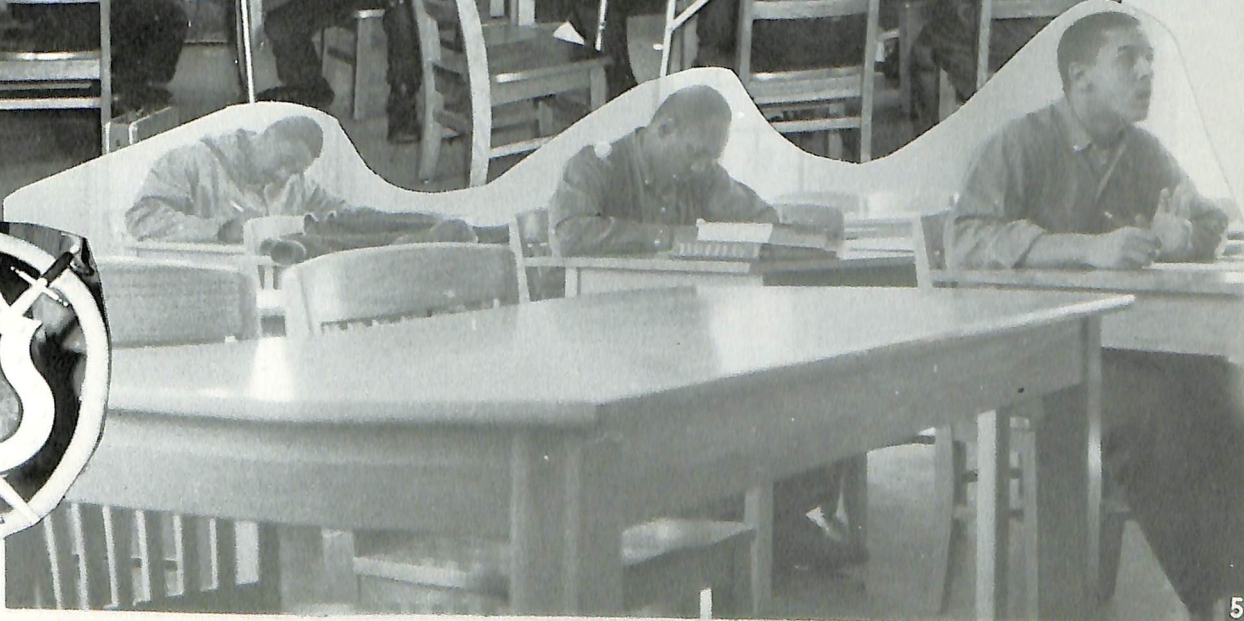
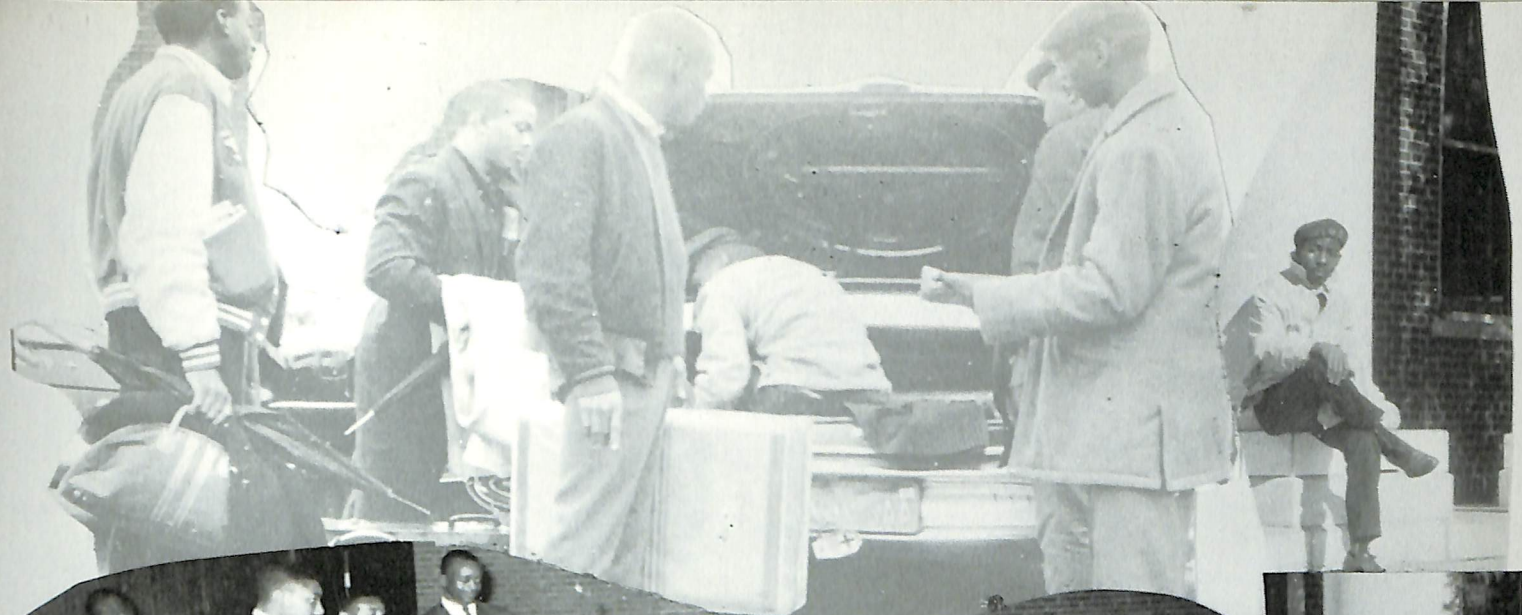
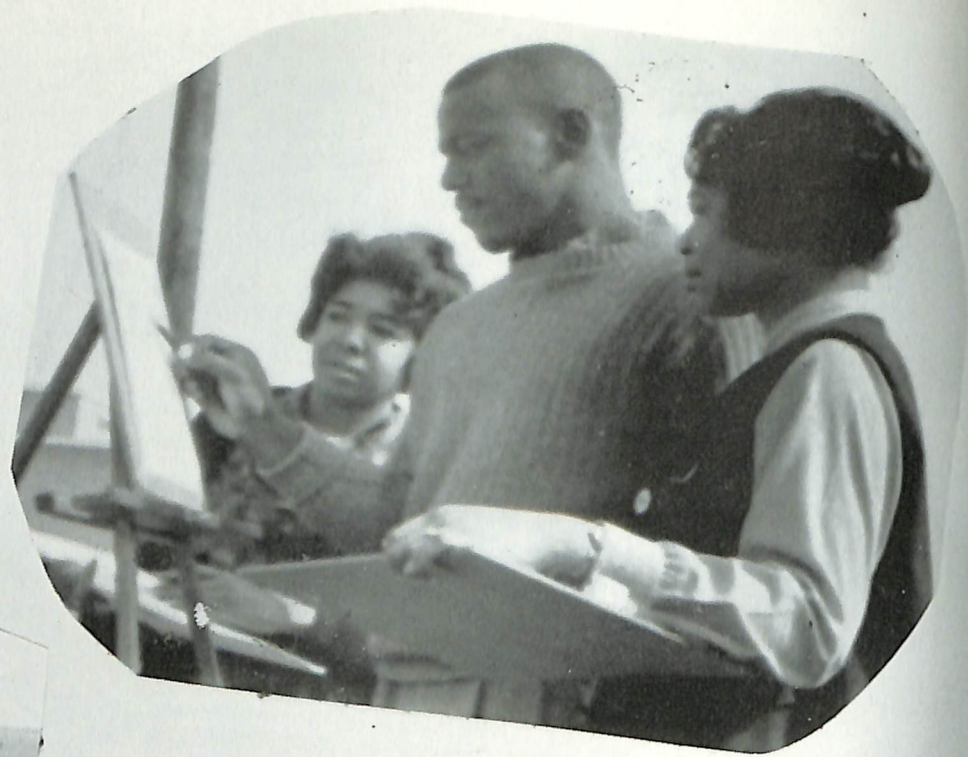
# MANY LONG YEARS AGO







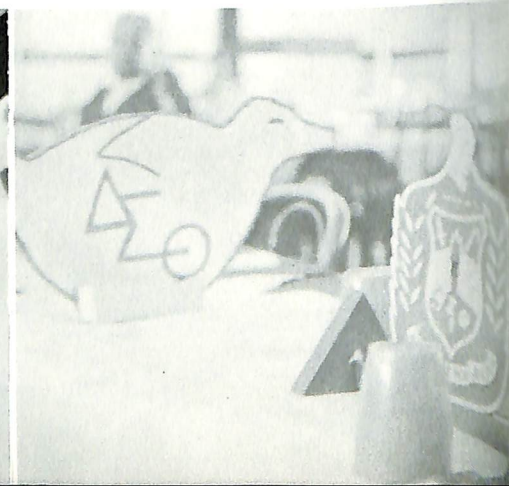
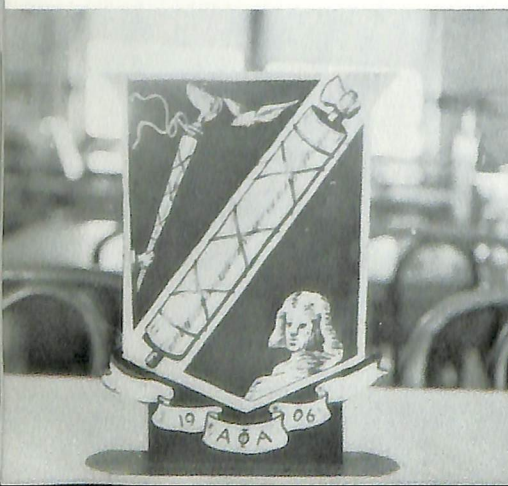
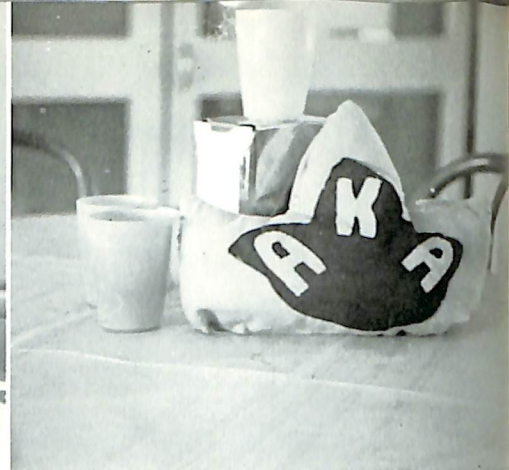




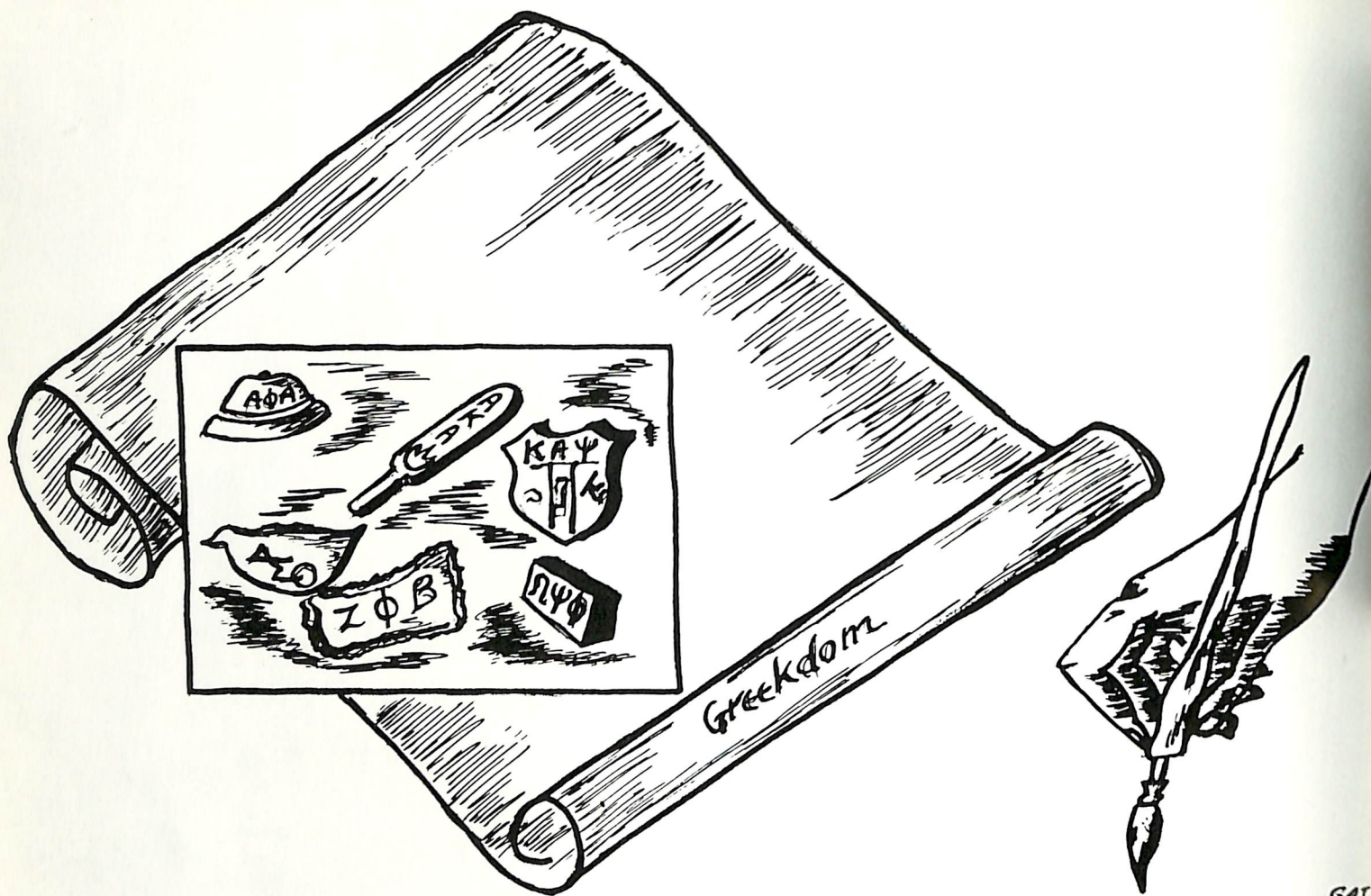




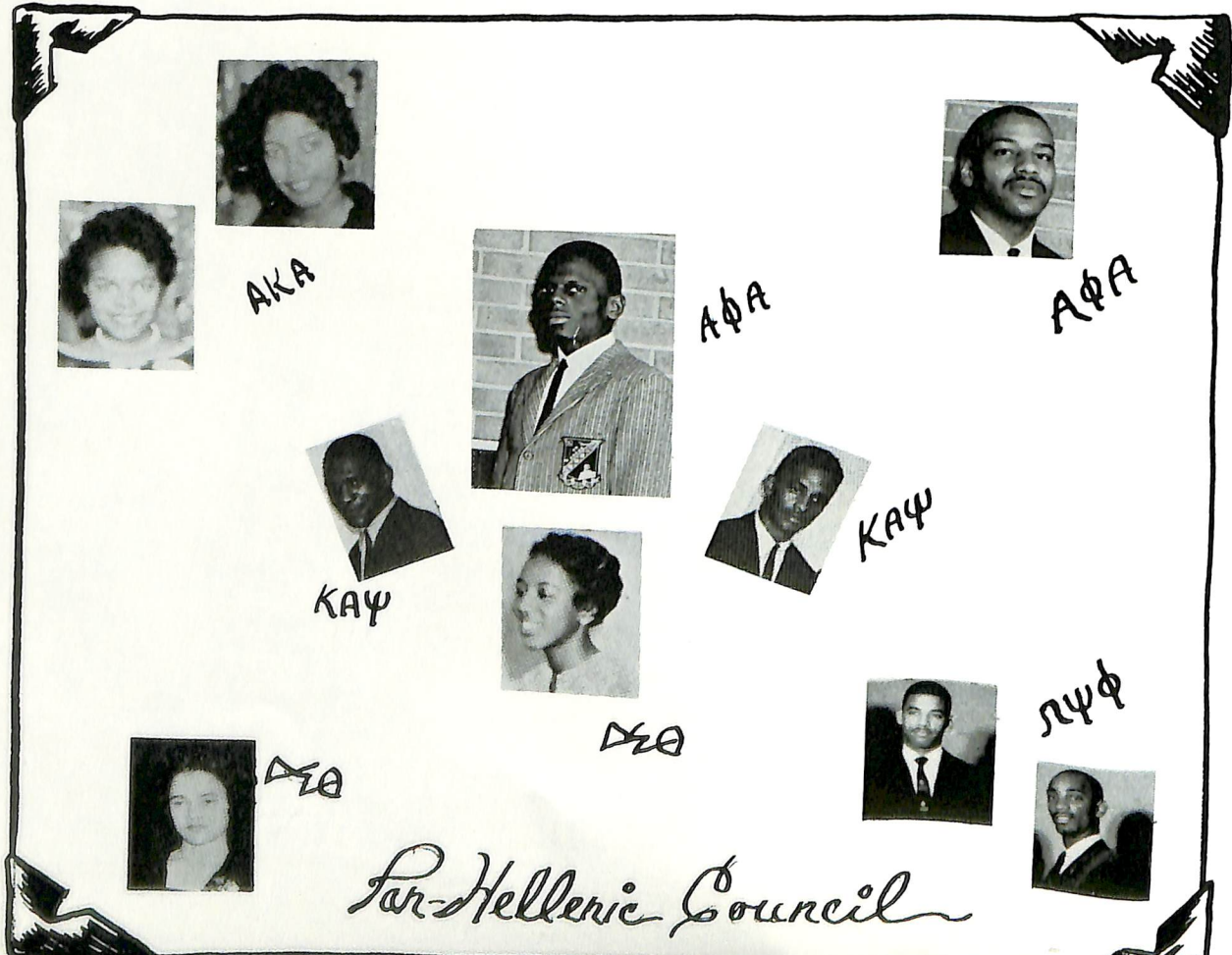








GAT



# *Fraternities and Sororities*



ALPHA KAPPA ALPHA  
Sorority



ALPHA PHI ALPHA  
Fraternity



DELTA SIGMA THETA  
Sorority



# Fraternities and Sororities

KAPPA ALPHA PSI  
Fraternity



ZETA PHI BETA  
Sorority

OMEGA PSI PHI  
Fraternity



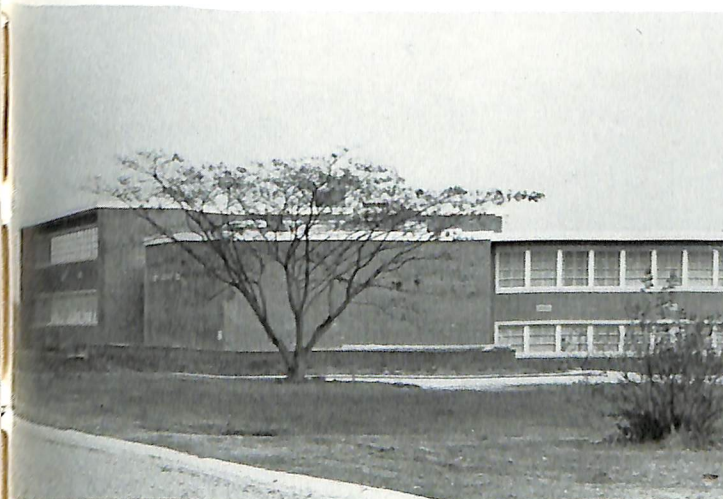
Lockerman Hall



Conrad Hall



President's Home



Grossley Hall



Conwell Hall

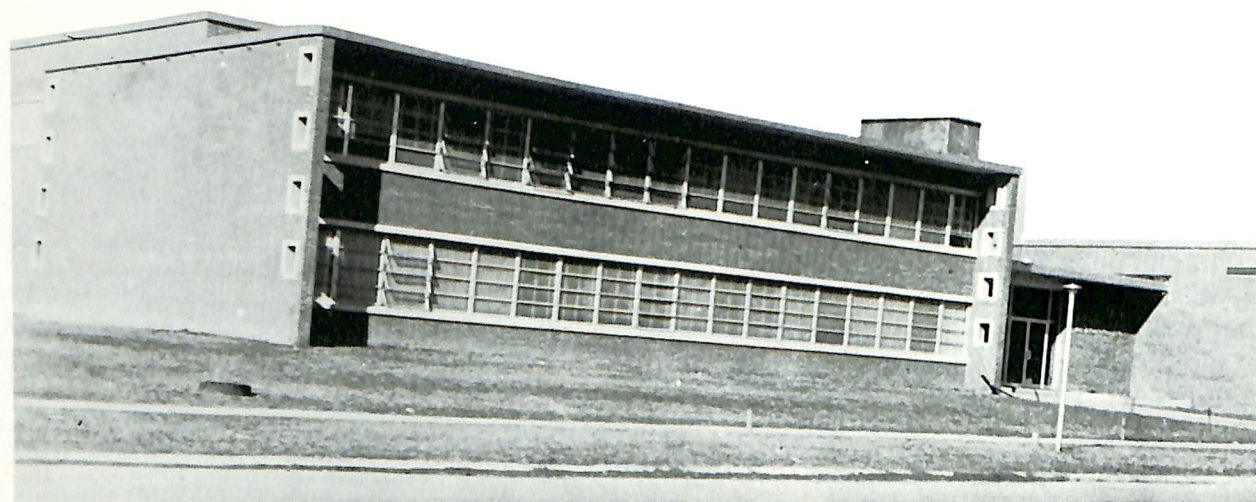




T-Building



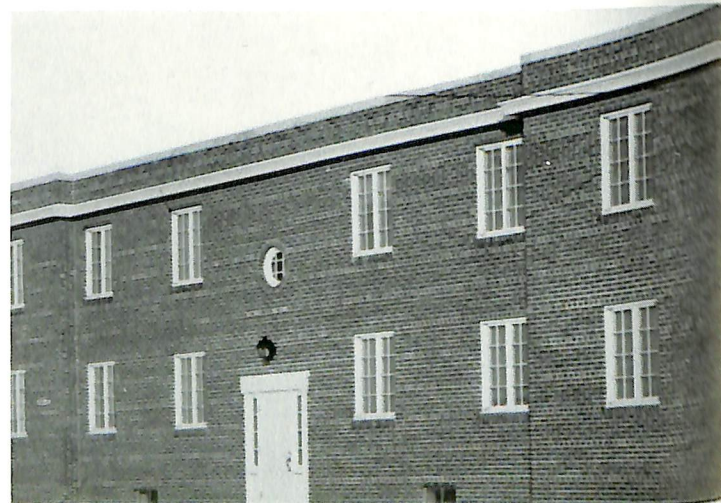
Delaware Hall



Memorial Hall



Agriculture Building



Kent Apartment



*Miss Delaware State*

AGNEW LOCKETT  
'61





J. Pinkett  
B



H. Wilder  
B



G. Bratcher  
CIAA End



W. Pinkney  
B



F. Lingo  
B



M. Little  
Co-Captain, Back



R. Saunders  
B



F. Williams  
F



A. Lawson



H. West  
B



C. Wilson  
Captain, Guard

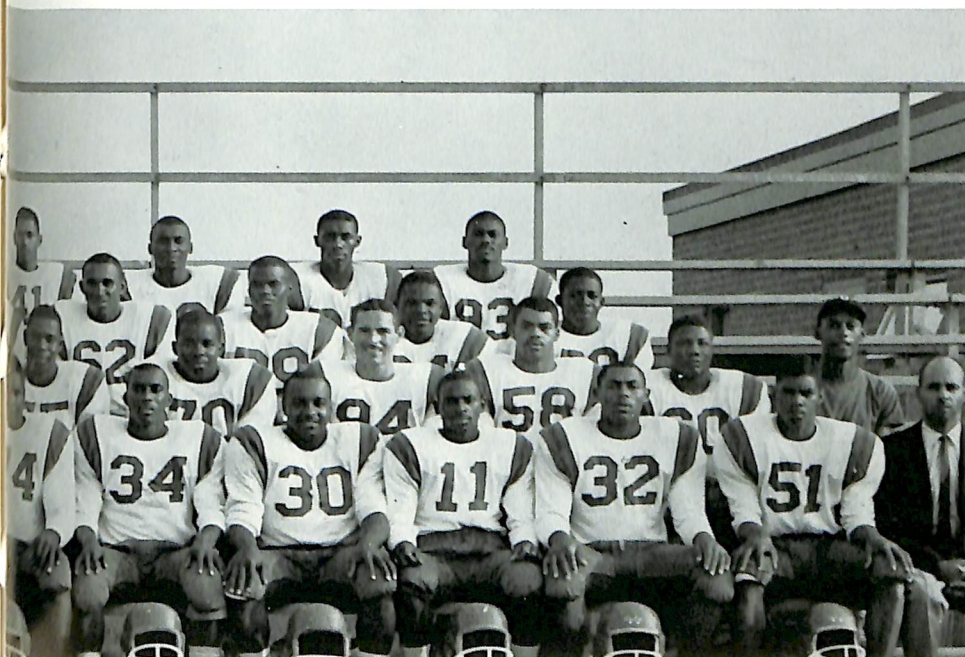


DELAWARE STATE HORNETS, 1960

Under the fine coaching of Roy D. Moore in his first year at D.S.C., a scrappy Hornet football team displaying spirit and determination sparked their way through a season of outstanding CIAA competition.

The Hornets captured their first victory with an impressive win over Howard University, 24-6 allowing Howard only one yard rushing.

An underrated Lincoln University eleven fell under the Hornet's sting 38-6 at their homecoming.



An outclassed St. Paul eleven was swamped 38-7 before a rain drenched crowd for their third victory of the season.

A highly favored St. Augustine aggregation went down to defeat after the Hornet's made a valiant goal line stand 12-6.

The D.S.C. Hornets compiled a 4-3 record in CIAA competition. Though the Hornets were unsuccessful in their endeavors to capture the conference title this year, the quality of play and the scoring outcome permits them to hold their heads high among their gridiron competitors.



F. Brunson



21

G. Brittingham  
B

# FOOTBALL



17

J. Haynes  
T





A. Thompson  
E



B. Nixon  
T



H. Wallace  
C



C. Bost  
G



E. Duck  
E



J. Sizemore  
G



W. Holt  
B



W. Hanks  
C



W. Pearson  
E



C. Fortune  
E



C. Malloy  
G



A. Dupee  
B



I. Heath  
B



U. Baxter  
E



B. Dozier  
T

# FOOTBALL

# FOOTBALL



Warm-Up Time, D.S.C.



Chick Little leading the way for Heath to score



D. Ruffin  
C



Fight, Team, Fight  
Left to Right; J. Singleton, B. Mangum, L. Wimberly, Captain, P. Harmon, P. Palmer.



W. Bell  
B



Homecoming Crowd



# Basketball



B. Wyche  
F



K. Pearson  
C



H. Joyner  
G



R. Baker  
Captain, Guard



D.S.C. BASKETBALL

A sharp shooting Hornet Quintet showing tremendous drive and effort finished with a successful season.

The season's games were highlighted by, among other things, the fine playmaking of Thomas Arrington; the great rebounding of Kenny Pearson; the consistent

# Basketball



L. Brashears  
F



T. Arrington  
Playmaker, Guard



W. Penny  
F



TEAM, 1960-61

shooting of Joe Bratcher and the sharp shooting of Hewie Joyner and Walter Penny. The defensive playing of Captain Roscoe Baker and his fine shooting were responsible for calming the Hornets in tense moments and leading them to victories.

With five veterans returning, Coach Benny George looks forward to playing in the CIAA Tournament this year.



G. Bratcher  
Leading Scorer, F





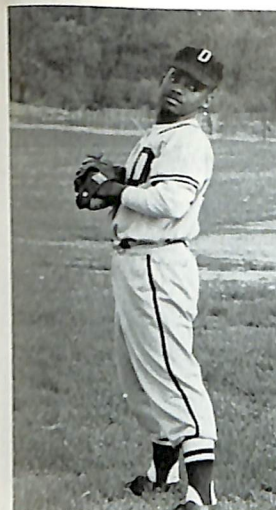
M. Harriston,  
ss, 3b, Rookie  
of the Year.

E. Jones, 3b

C. Little, c, 1b

T. Boykin, 2b  
Co-captain

F. Coverdale  
P



C. Harmon, P

G. Brittingham,  
cf, Co-captain

D. Short, P

R. Moore, 1b

T. Arrington  
P

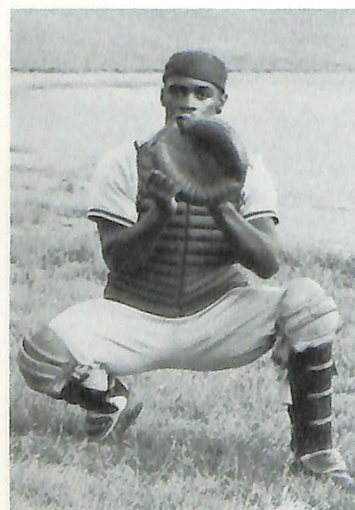
# *Delaware State College Baseball Team 1960*



"Baseball belongs to the extensive genius of civilized athletic competition stemming from the primitive play-urge to whack a fragment of rock about the place with a club."

Coach Blakey, with a full group of veteran "whackers" returning, is looking forward to the warm breezes of spring to usher in the words "Play Ball!"

Last year's team placed second in the CIAA with 12 wins and 4 defeats. This year with 14 returning lettermen,



C. Wilson, C.  
Most Valuable Player

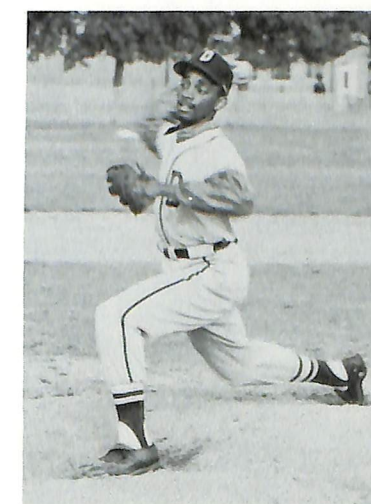


the outlook is bright. The boys on the mound are expected to carry the load with some fine defensive and offensive support from the veterans.

Roscoe Baker and Thomas Arrington are the pitchers to be relied upon to carry some of the mound responsibilities.

Co-captain Cal Wilson and Co-captain Jerome Pinkett, who ranked second and seventh in Conference batting last season, are expected to be the big guns this year.

# *Delaware State College Baseball Team 1960*



R. Baker, P  
Work Horse



# Delaware State College Baseball Team 1960



Coach Blakey,  
R. Saunders, Stat.



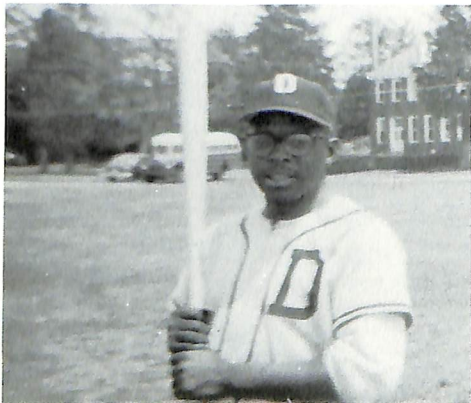
Q'S THREAT  
R. Baker, T. Boykin, R. Moore, C. Harmon



1961 CO-CAPTAINS  
C. Wilson, J. Pinkett



FRESHMEN  
J. Conway, M. Hairston



STUDENT COACH  
A. Winfield

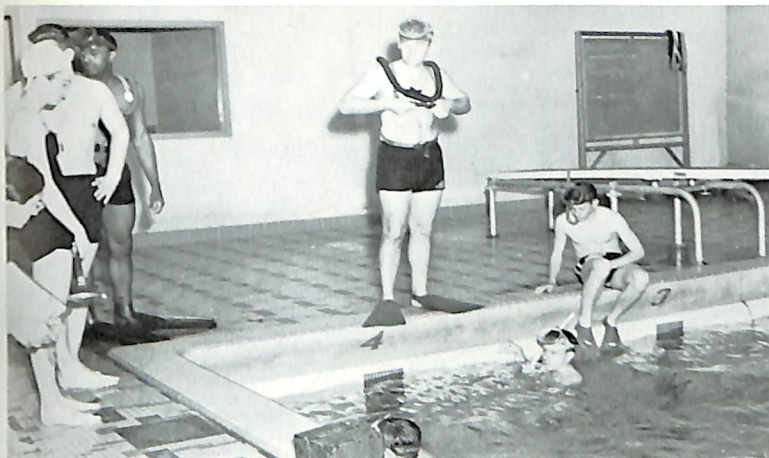


SWINGING SOPHOMORES  
W. Pearson, T. Arrington, R. King

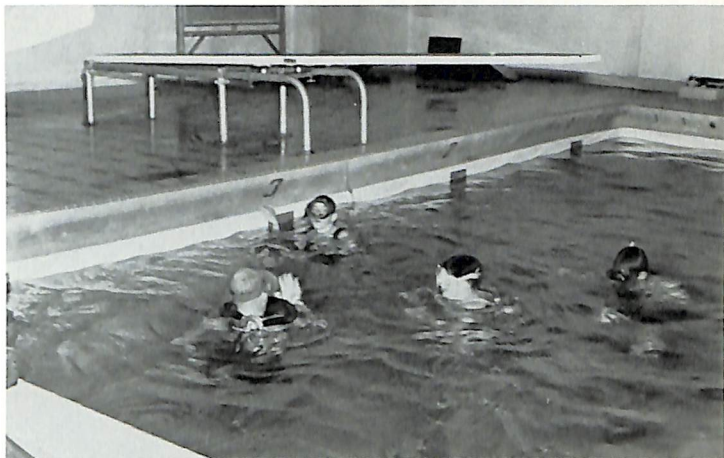


MURDERER'S ROW  
C. Harmon, G. Brittingham, C. Wilson, J. Pinkett, E. Jones, R. Baker.

# Swimming and Track



SKIN DIVING CLASS



DOWN WE GO



VARSITY TRACK



THE START



THE FINISH



# Building Strong Bodies

(Children's Swim)



# GUEST ARTISTS



Margaret Tynes



Carol Brice



Dr. T. James Crawford



Dr. Clifton Jones



Dr. John Hope Franklin



## BUSINESS EDUCATION VISITS INDUSTRY



BUTLER'S, INC., WILMINGTON STATIONERS

## PARADE DRESS!



College Choir and Band dress-up for Spring Recitals

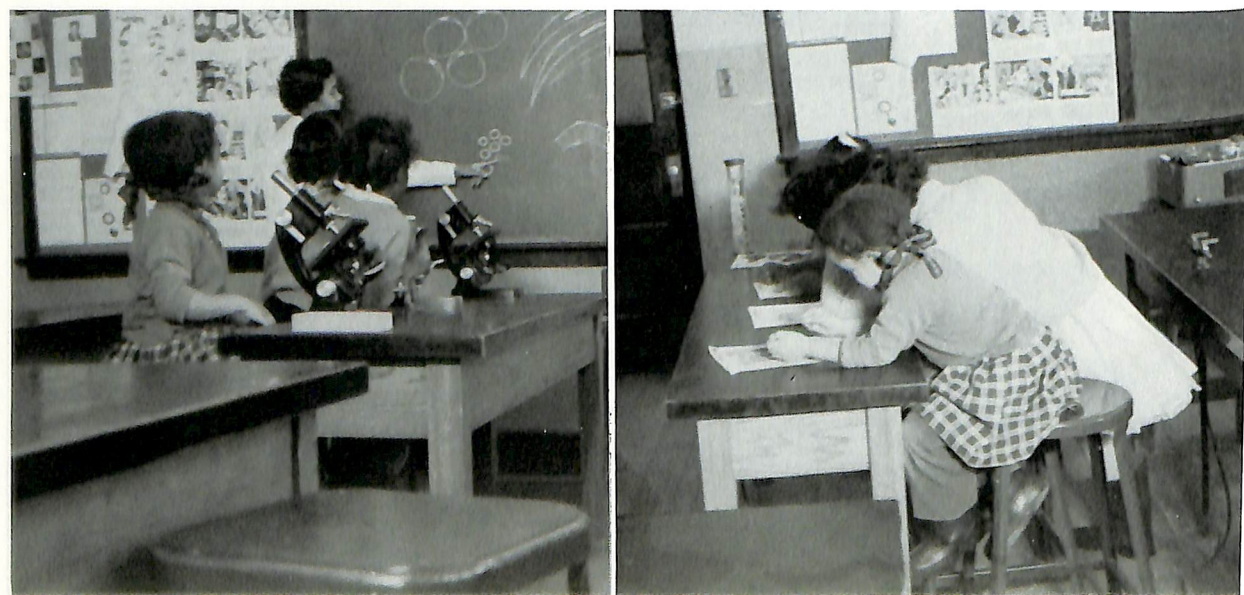




# Child Development Laboratory



Nursery school children go to college



# News Items

Dr. and Mrs. Holland say good-bye before leaving to become Hampton's prexy and "first lady."



Dr. Luna I. Mishoe accepts appointment.

New prexy begins work with alumni.





# The Busiest Office . . . (of All)

Miss D.S.C. Mailing . . .



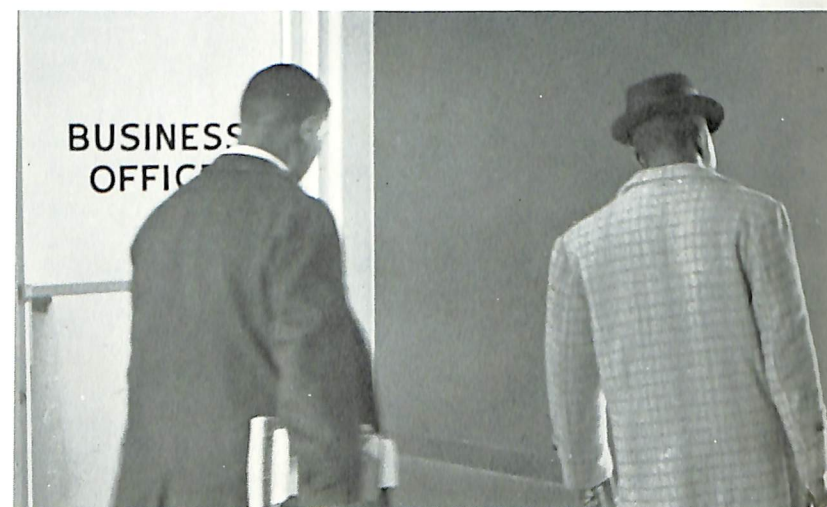
Pay now, avoid the rush . . .



Courtney Johnson . . . Undecided—



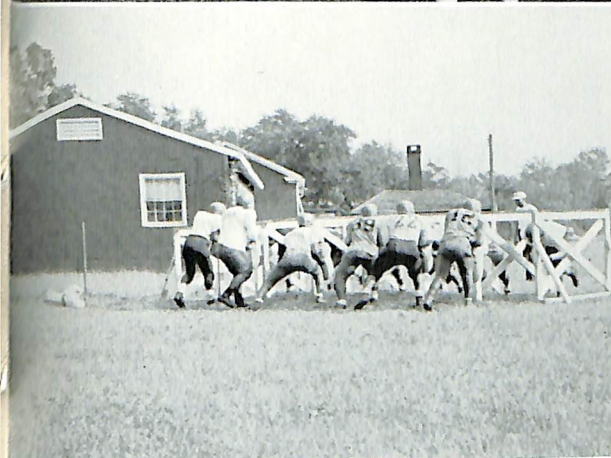
Bill Granville and Jim Marshall—Makin' it . . .



A Package, for me . . . ?

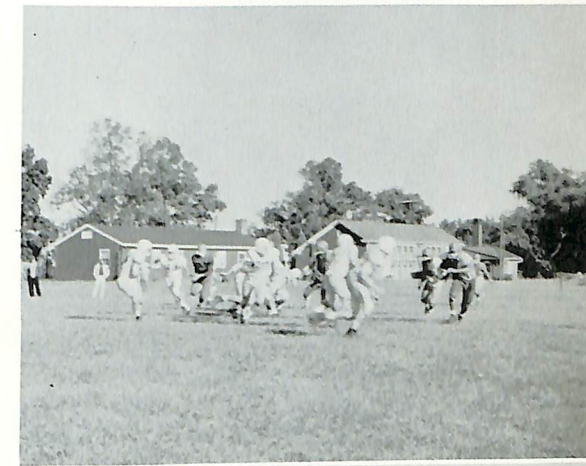


Takin' care of business, or not . . . ?



"Hopeful spectators"

"Follow me, mate!"



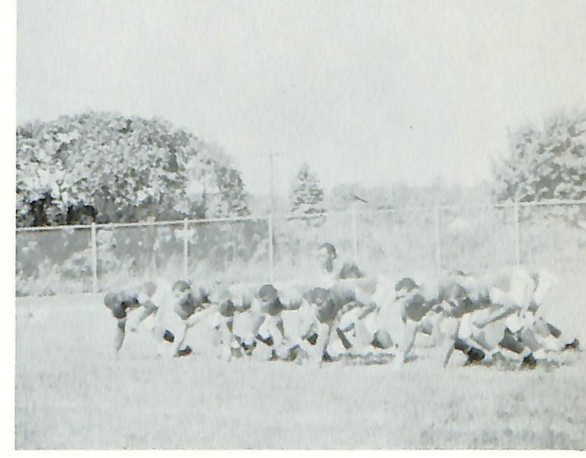
"Looking good, eh!"

"T.D. Bound"



"We Dare you! ! !"

"23-4-16-1—Hike! ! !"







"Just a short time left"



"I don't have a square, see?"



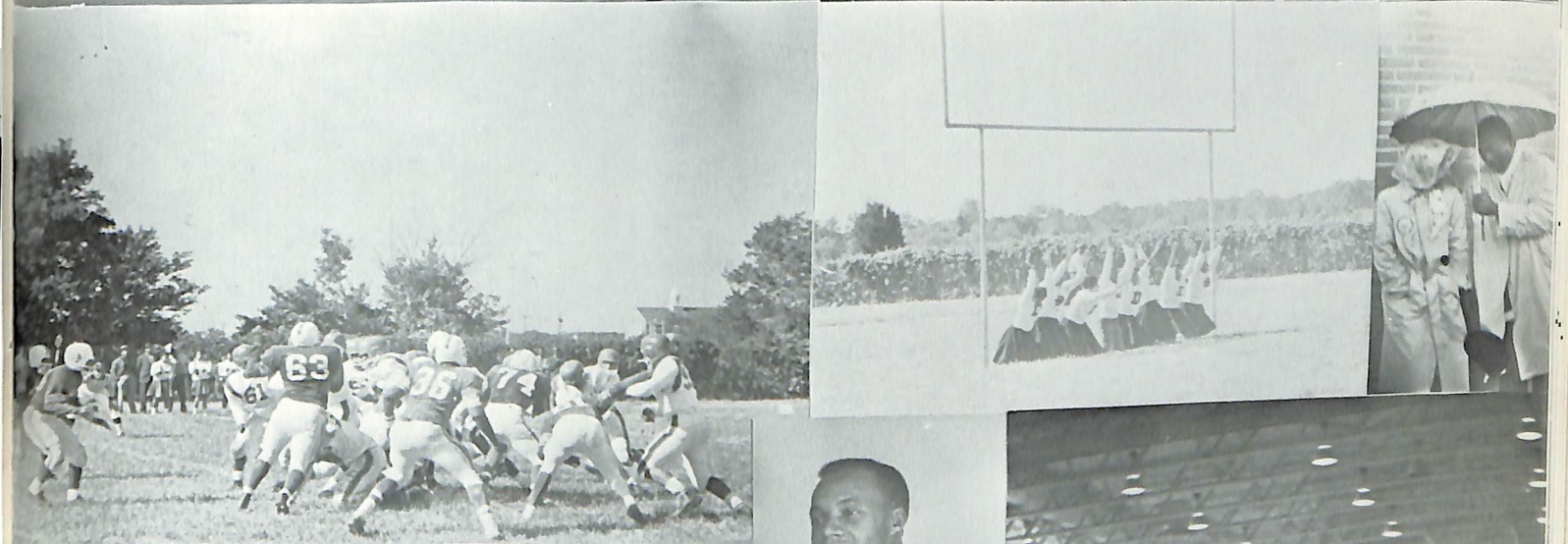
"Oh, no you won't!"



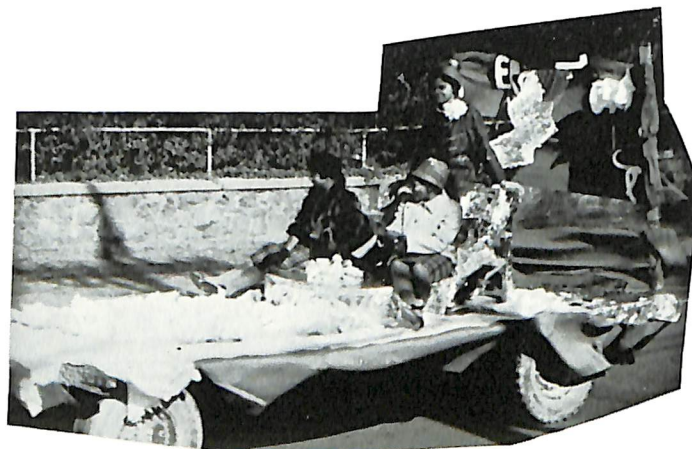
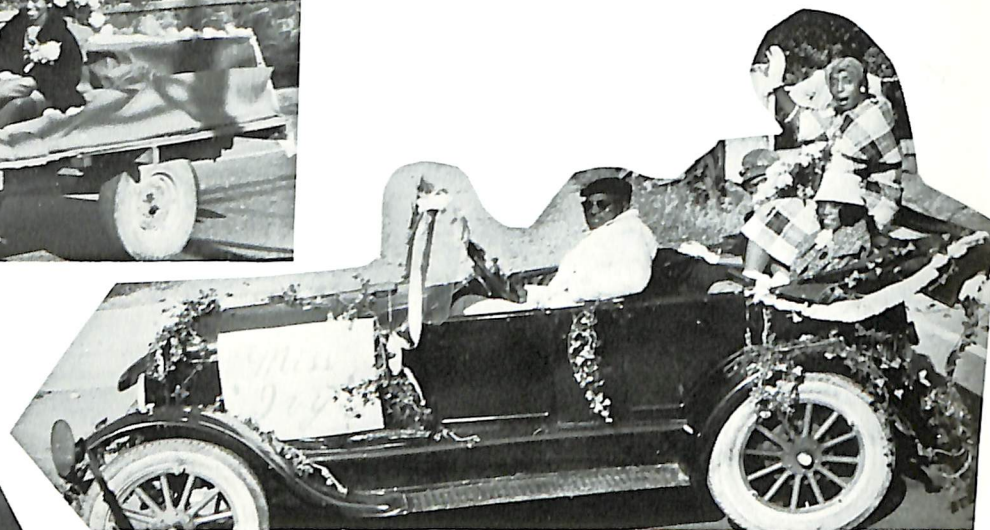
"Somebody, please show us the light!"



"The calm before the storm"







Deuces wild?



Watch for the Nightwatch



Have you had your physical?





"Heads up!"



"C'mon, pitch it—I dare you!"



"Let's see what I need"



"Do we eat now, Dr.?"



"Gee, can I really have it, Dad?"



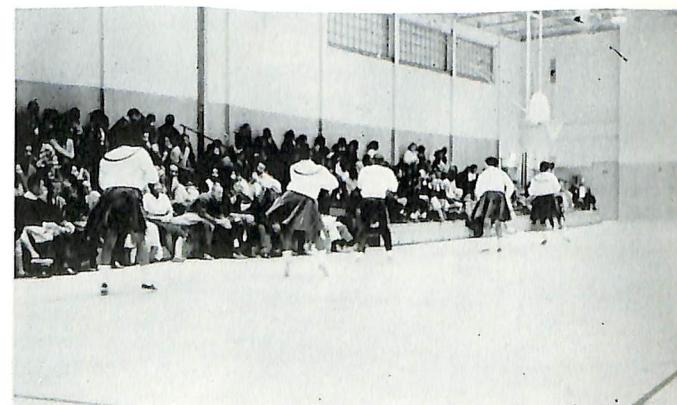
"A little bit more, please!"



"Mmm, that's a good point."



"Who's got the ball?"



"... Let's go, big team, let's go!"



"He's not going to hurt you, Shawn."



"The after dinner crowd"



"Er-r, going my way?"



"The happy family!"



"Now, let's add this one."



# AUTOGRAPHS

MRS. DOROTHY HANSLEY APPLE  
Americus, Georgia

ELLIS A. BLOCKSON  
Sewickley, Pennsylvania

SUSAN J. BLOCKSON  
Sewickley, Pennsylvania

MRS. MARY L. BOYER  
Middletown, Delaware

THELMA MURRAY CORNISH  
Prince Frederick, Maryland

EFFIE BURTON DeSHIELDS  
White Sands, New Mexico

MR. AND MRS. GARRY DeYOUNG, JR.  
Henderson, Maryland

WILLIAM M. FREEMAN  
Angier, North Carolina

MRS. W. ANTHONY GAINES  
Philadelphia, Pennsylvania

DONNELL L. GUY  
Norwalk, Connecticut

SARA R. HALL  
Buffalo, New York

MRS. WILLIAM F. HARGRAVES  
Covington, Kentucky

SHIRLEY FRANCES HART  
Bridgeton, New Jersey

REV. MICHAEL E. HAYNES  
Boston, Massachusetts

MISS CAROLYN HEARNE  
Dover, Delaware

DR. CHARLES A. HENRY, JR.  
Dover, Delaware

DR. AND MRS. JEROME H. HOLLAND  
Hampton, Virginia

JOHN H. HORNER  
Bridgeville, Delaware

MRS. ELVA MORRIS JOHNSON  
Millsboro, Delaware

MARGARET ANN LEWIS  
Stone Harbor, New Jersey

MRS. NORA W. LINK  
Chester, Pennsylvania

MRS. LULA R. MACKLIN  
Harrington, Delaware

JOSEPH ANDERSON MORRIS  
Wilmington, Delaware

MR. AND MRS. JAMES PRETTYMAN  
Milton, Delaware

EDITH BELL SCOTT  
Philadelphia, Pennsylvania

MR. AND MRS. ALTON T. SINGLER  
New York, New York

MR. AND MRS. HOWARD STEVENSON  
Dover, Delaware

RALPH B. THOMPSON  
Philadelphia, Pennsylvania

DR. AND MRS. JESSE R. WILLIAMSON  
Dover, Delaware

DR. AND MRS. W. RICHARD WYNDER  
Dover, Delaware

*Honorary Editors*



~ Patrons ~

REV. AND MRS. C. W. BAGWELL  
Laurel, Delaware

MARGERY POTTS BENNETT  
Catonsville, Maryland

U. S. SENATOR AND MRS. J. CALEB BOGGS  
Wilmington, Delaware

MR. AND MRS. JOHN W. BOYER  
Middletown, Delaware

BETHEL A.M.E. CHURCH  
Lancaster, Pennsylvania

MR. AND MRS. SOLOMON D. DANIELS  
Greenwood, Delaware

MR. AND MRS. VERNON B. DERRICKSON  
Dover, Delaware

ALBERT J. DREDDEN  
Berlin, Maryland

MRS. ROBERTINE DRYDEN  
Wilmington, Delaware

MRS. GLENNIE T. EDWARDS  
Brooklyn, New York

MRS. PERNOLA FLEMMING  
Camden, New Jersey

MR. AND MRS. JOHN H. FOREMAN  
Greenwood, Delaware

MRS. EDNA M. HARMON  
Greenwood, Delaware

MRS. WILLIAM D. HARTFORD  
Martinsville, Virginia

MR. CORNELL HARVELL  
Washington, D.C.

MRS. EDNA G. HAYNES  
Roxbury, Massachusetts

MR. PERCY H. HENRY  
Jamaica, New York

MISS ELLA W. HENSON  
Lincoln, Delaware

MRS. AMELIA J. HILL  
Bronx, New York

MR. AND MRS. JOHN O. HOPKINS, JR.  
Wilmington, Delaware

MRS. NELLIE JOBES  
Wilmington, Delaware

MRS. MABEL M. LAWTON  
Roxbury, Massachusetts

MRS. WILLIAM C. LEWIS  
Wilmington, Delaware

MISS MILDRED LOCKETT  
Newark, New Jersey

MISS JEANNE McHOLLUM  
Boston, Massachusetts

MR. AND MRS. JOSEPH MITCHELL  
Boston, Massachusetts

MISS MADELINE MORRIS  
Wilmington, Delaware

MR. AND MRS. SAMUEL PETERSON  
Wilmington, Delaware

MRS. VIOLA WAPLES PIPER  
Milton, Delaware

MR. AND MRS. JOSEPH RANDOLPH  
Laurel, Delaware

MISS MARTHA E. RICHARDSON  
Greenwood, Delaware

MR. HERBERT D. RICKETTS  
Seaford, Delaware

MR. AND MRS. CLARENCE B. SCOTT  
Wilmington, Delaware

MRS. ROSLYN WALLS SINGLER  
New York, New York

MRS. ELIZABETH I. A. SMITH  
Milton, Delaware

MR. AND MRS. SEYMOUR STERLING  
Wilmington, Delaware

MR. AND MRS. BERNIE STEWART  
Norton, Maryland

MR. AND MRS. ALLEN LEE THOMAS  
Philadelphia, Pennsylvania

MISS MARGARET L. THORPE  
Harrington, Delaware

MR. AND MRS. ROBERT TRADER  
Greenwood, Delaware

MR. AND MRS. ELMER TURNER  
Martinsville, Virginia

MISS TINA D. TURNER  
Wilmington, Delaware

MR. GRANVILLE H. WEST  
Laurel, Delaware

MR. RAYMOND H. WEST  
Laurel, Delaware

MR. AND MRS. WARREN WHITE  
Wilmington, Delaware

MRS. HARRY P. WILLIAMS  
Martinsville, Virginia

MR. AND MRS. ROBERT L. WATSON, SR.  
Wilmington, Delaware

BUTLER'S, INC.

Stationers  
Authorized Distributors

A .B. DICK  
MIMEOGRAPH HECTOGRAPH  
LITHOGRAPH

TELEPHONE OL 8-7545  
415 Market Street  
Wilmington Delaware

-Compliments of-

Mary Carter Paint Store

Blue Hen Food Market

West Dover Package and Liquors

Mikell Motors

George M. Records, Inc.

Majestic Liquors

Hamilton's Children Apparel

Hallett's  
Rug and Upholstery Cleaners

Pugh's Atlantic Service

Compliments  
of

MORRISON SUPPLY CO.

Hood's Book Store

The Best Folk Meet  
at the

-ROSEBOWL-

Foods Liquors  
North DuPont Highway  
RE 4-8750  
Dover Delaware

DOVER HARDWARE CO.

9 Loockerman St.  
Dover Delaware  
RE 4-3909



Compliments  
of

OMEGA PSI PHI  
FRATERNITY, INC.

Psi Iota Chapter

DOVER DELAWARE



DOVER COCA-COLA  
BOTTLING COMPANY

P.O. Box 306  
DOVER, DELAWARE

Phone REdfield 4-2651

COMPLIMENTS

of

ZETA RHO LAMBDA  
CHAPTER  
ALPHA PHI ALPHA

SIMPSON  
LUMBER COMPANY

WALTER H. SIMPSON  
Camden Delaware

Hardware—Paints  
Building Materials of All Kinds  
Kitchen Cabinets a Specialty

Warm Air Heating Installed  
by  
Competent Engineer

PHONE: MYrtle 7-2721

Compliments  
of

E. L. JONES & CO.  
INC.

DOVER DELAWARE

Compliments of

DELVALE  
EASTERN SHORE, INC.

North DuPont Highway  
DOVER DELAWARE  
REdfield 4-2291

MIL-DEL  
Wholesale Fruit and Produce

Earl Cohee  
R.D. #1, Milford, Delaware  
PHONE GA 2-9178

ELDER  
PRINTING SERVICE

4 FOREST STREET  
Dover Delaware  
Printers of  
"THE HORNET"



Royal Crown  
Cola  
**RC-NEHI CORP.**  
15 WILLIAM ST.  
Dover, Del.

Compliments  
of  
**EMANUEL'S**  
The Fashion Store  
of the Eastern Shore  
DOVER DELAWARE

Compliments  
of  
**ALFRED S. BIGGS  
& SON, INC.**

"Your Quality Furniture Store"

407 Loockerman Street  
Dover Delaware  
PHONE: RE 4-7407

**Dover Gas Light Division  
of  
CHESAPEAKE UTILITIES**  
RE 4-5884 RE 4-3411  
Dover, Delaware

Compliments  
of  
**PIERCE'S PHARMACY**  
DOVER, DELAWARE  
Prescriptions and School Supplies

PLUMBING HEATING  
  
Dover Delaware

**NAP & SPENCE**  
=====

you're better informed with  
**BOTH!**  
Read the  
**MORNING NEWS  
and the  
EVENING JOURNAL**  
Local News and Business Bureau:  
29 Kings Hwy., Dover, Del.  
Phone RE 4-7577 or DE 5-5453

**B & B  
MUSIC SERVICE**  
231 Loockerman Street  
PHONE RE 4-2502  
Dover Delaware

**M. A. HARTNETT, INC.**

Lumber  
Building Materials  
Transit Mixed Concrete

THE BIG **1**  
Serving Downstate Delaware  
From Dover . . .  
The Capitol of the First State

**THE  
DELAWARE STATE  
NEWS**

RE 4-4784 DOVER, DEL.  
Circulation \* Advertising \* News

**HARRY LOUIE  
Laundry & Dry Cleaning**  
Two Locations to Serve You:  
129 South Governor Ave., Dover, Del.  
Opposite Dover Air Force Base  
RE 4-3701

SHOP AT  
**SIMON'S DEP'T STORE**  
Dover, Delaware

RE 3020 DOVER, DEL.



**J. E. BECK CO.**

"Fine Furniture Since 1906"  
Furniture Carpet Bedding  
(Free Delivery Within 100 Miles)  
144 South Governors Ave.  
Dover Delaware  
RE 4-3591

**CLAYTON JENKINS**

Insurance  
Auto—Fire—Life  
Hospitalization  
Specialist in Auto Insurance  
Under 25 Years of Age  
118 W. Division St. Dover  
RE 4-2320 or RE 4-3164

**FREIHOFFER'S**

Bread and Rolls

Compliments  
of

**WHELAN'S**

Remington Rand Agency  
RE 4-3398 Dover, Delaware

**CHAMBERLIN SERVICE,  
INC.**

Bonded Roofing  
All Kinds Siding  
Termite Control  
Dover Delaware  
RE 4-4737

**PIERCE'S PHARMACY**

Prescriptions  
Hallmark Cards  
School Supplies  
LOOCKERMAN STREET  
Dover Delaware

**KIRBY & HOLLOWAY**

Fine Quality  
SAUSAGE AND SCRAPPLE  
MEATS . . . PROVISIONS  
Harrington EX 8-3705 RE 6-1221

**DOVER  
LITHO-PRINTING CO.**

Dover's Complete  
Printing Service

**BOLAN MOTORS, INC.**

Ford, Falcon, and T-Birds  
Sales—Service  
Falcon and Ford Trucks  
RE 4-3311 RE 4-7442  
Dover, Delaware

**CHARLES W. HARDESTY  
AGENCY, INC.**

Insurance  
Auto, Liability, Life,  
Home-Owners'  
202 LOOCKERMAN ST.  
Dover Delaware

**DAVEY LUMBER CO.**

North of the College  
Building Materials  
of All Kinds  
RE 4-9610 DOVER, DELAWARE

Compliments of  
**DOVER  
HARDWARE CO., INC.**

9 LOOCKERMAN STREET  
Dover Delaware

In  
Dover  
**ETTENDER'S**  
Quality Footwear  
207 Loockerman Street  
RE 4-2459

**DOVER APPLIANCE  
& REFRIGERATION, INC.**

AUTHORIZED DEALER FOR:  
Sylvania Hi-Fi and TV  
Amana Refrigerators and Freezers  
Frigidaire Appliances  
Nevamar Kitchens  
Delco Heating and Air Conditioning  
Carrier Heating—Air Conditioners  
Trane Heating and Air Conditioning  
Easy Laundry Equipment  
218 West Loockerman St. RE 4-5736

Compliments  
of  
**CANTEEN COMPANY**  
DOVER DELAWARE

Compliments  
of  
**A FRIEND**



Compliments and Best Wishes From  
**ROYAL CROWN  
COLA**

Bottlers and Distributors  
Nehi Flavors Par-T-Pak Upper Ten  
RC-NEHI BOTTLING CORP.  
15 William Street  
Dover Delaware

Compliments  
**LOUIS H. COLLISON**  
MARYDELL, DELAWARE  
Pella Rolscreens  
Twi-Nighter Venetian Blinds  
Pella All-Wood Folding Doors

Compliments  
of  
**Dover Gas Light Division  
of  
CHESAPEAKE UTILITIES  
CORP.**  
DOVER, DELAWARE

**DOVER  
LAUNDRY & CLEANERS,  
INC.**  
411 So. Governors Avenue  
RE 4-5511 DOVER, DELAWARE

**YOUNG & REVEL, INC.**  
Office Equipment and Supplies  
Stationery and Printing  
PHONE: GArden 2-4567  
Milford 21 Church Ave. Delaware  
"We Not Only Sell . . .  
We Serve As Well"

Compliments of  
**DELMARVA  
WAREHOUSE, INC.**  
Agent for  
Allied Van Lines  
Moving and Storage  
PHONE: RE 4-5949

Compliments of  
**CAPITAL  
OFFICE EQUIPMENT CO.**  
Office Equipment  
and Stationery  
205 W. Division St. Dover, Delaware

Compliments  
of  
**KENT COUNTY  
MOTOR CO.**  
Buick \* Olds \* Opels  
DOVER DELAWARE













DEL  
LD  
1461  
.D75  
1961

DEL  
LD  
1461  
.D75  
1961  
c.4

Delaware State College  
The statesman.

Wm C. Jason Library - Learning Center  
Delaware State College  
Dover, Delaware 19901

**FOR CLOSED RESERVE  
DO NOT TAKE FROM THE LIBRARY**



